



Escambia County School District

Parent Satisfaction Survey Results Report

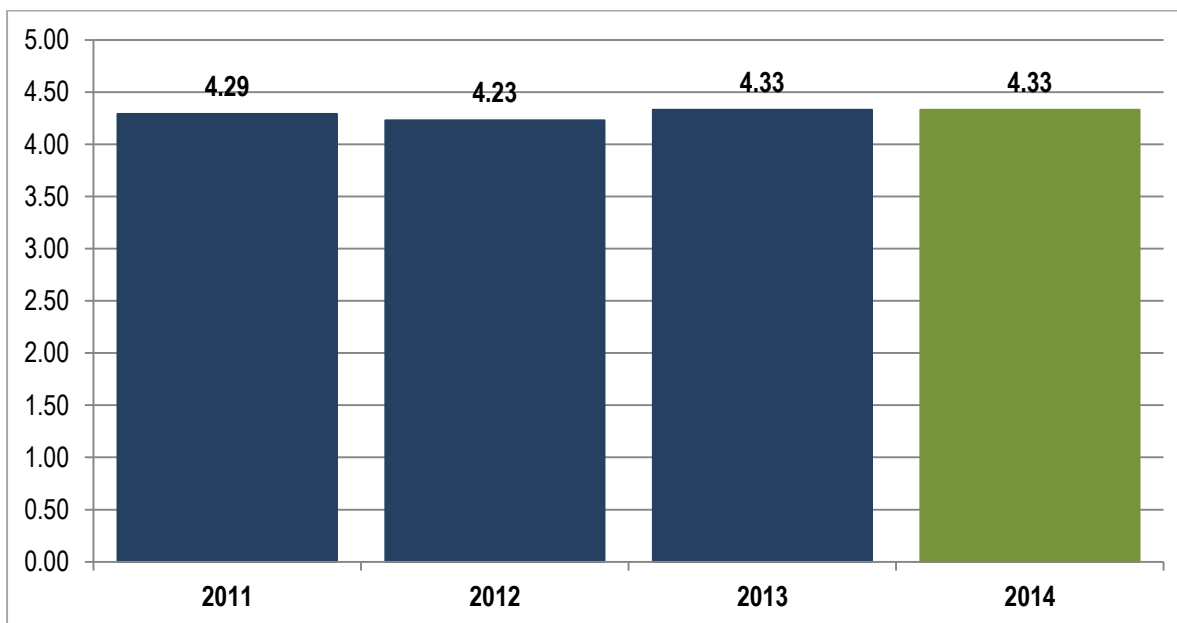
2014

Executive Summary

The Escambia County School District (ECSD) is committed to creating a great place for students to learn, teachers to teach, staff to work, and for parents to send their children to receive a great education. To build on this commitment the leadership of the school district consistently gathers data on four essential goals and measures: Employee Engagement, Parent Satisfaction, Support Services, and Student Achievement. The District measures parent satisfaction through the administration of the Parent Satisfaction Survey each year. Baseline data for the parent survey was established in November 2011; subsequent survey administrations occurred in May 2012 - 2014.

This report focuses on the results of the 2014 survey administration and includes comparison data based on consistent questions from previous administrations. The overall parent satisfaction rating is 4.33 on a scale of 1 to 5. The school district continues to achieve an overall mean score at or above 4.00 as viewed in Figure 1.

Figure 1. Overall Mean Satisfaction by Survey Administration

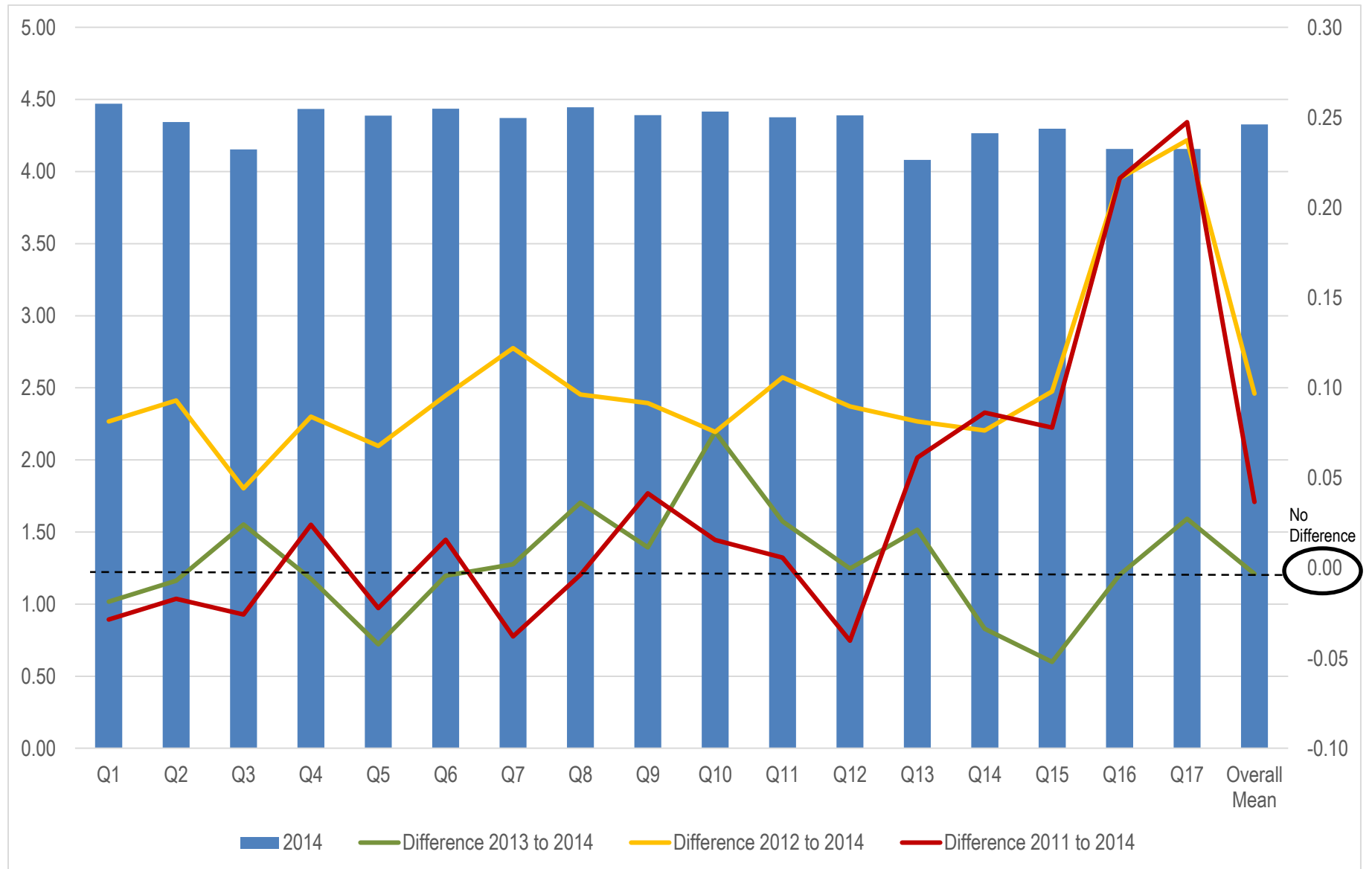


- Table 1 (page 2) shows the item mean and change in item mean by the four most recent survey administrations; note in all cases the difference or change in item mean is with the most current (2014) survey administration. The school district continues to achieve mean scores near or above 4.00; eleven items earned higher means when comparing 2014 to 2013, and all 17 items earned higher means when comparing to 2012 item means. The difference between 2013 and 2014 means that decreased range between -0.01 and -0.05.
- Figure 2 (page 4) shows the differences in item mean between the 2014 survey administration (displayed as bars) and the item mean difference (displayed as lines). The goal is continuous improvement or increase of each item mean; achieving this goal would mean that each item difference line would be displayed above the dotted line (which represents no difference / no increase in mean). Figure 2 shows that when comparing the 2014 survey administration item means with the previous three survey administrations, eight items (items 6, 8-11, 13, and 16-17) show consistent improvement as measured by an increase in the item mean in more than one year with no decreases across all three years.

Table 1. Item Mean and Change in Item Mean by Survey Administration

Questions	2014 n=7,320	2013 n=6,704	2012 n=2,958	2011 n=5,053	Difference 2013 to 2014	Difference 2012 to 2014	Difference 2011 to 2014
1. My child's learning is a high priority at this school.	4.47	4.49	4.39	4.50	-0.02	0.08	-0.03
2. School rules/discipline plans are enforced consistently at this school.	4.34	4.35	4.25	4.36	-0.01	0.09	-0.02
3. I regularly receive feedback from school staff on how well my child is learning.	4.15	4.13	4.11	4.18	0.02	0.04	-0.03
4. My family is treated with respect at this school.	4.43	4.44	4.35	4.41	-0.01	0.08	0.02
5. My child has every opportunity to be successful at this school.	4.39	4.43	4.32	4.41	-0.04	0.07	-0.02
6. My child has the necessary classroom supplies and equipment for effective learning.	4.44	4.44	4.34	4.42	0.00	0.10	0.02
7. I would recommend this school to other parents.	4.37	4.37	4.25	4.41	0.00	0.12	-0.04
8. This school provides a safe environment for my child to learn.	4.45	4.41	4.35	4.45	0.04	0.10	0.00
9. My child is recognized for good work and behavior at this school.	4.39	4.38	4.30	4.35	0.01	0.09	0.04
10. The school is clean and well maintained.	4.42	4.34	4.34	4.40	0.08	0.08	0.02
11. The teachers, staff, and administration at this school demonstrate a genuine concern for my child.	4.38	4.35	4.27	4.37	0.03	0.11	0.01
12. I am proud to say I have a child at this school.	4.39	4.39	4.30	4.43	0.00	0.09	-0.04
13. I receive positive phone calls or notes about my child from the school.	4.08	4.06	4.00	4.02	0.02	0.08	0.06
14. The principal at this school is approachable and reachable.	4.27	4.30	4.19	4.18	-0.03	0.08	0.09
15. The principal at this school is an effective leader.	4.30	4.35	4.20	4.22	-0.05	0.10	0.08
16. The Superintendent of the school district is an effective leader.	4.16	4.16	3.94	3.94	0.00	0.22	0.22
17. The Superintendent of the school district makes decisions that are in the best interest of children and parents of the district.	4.16	4.13	3.92	3.91	0.03	0.24	0.25
Overall Mean Satisfaction	4.33	4.33	4.23	4.29	0.00	0.10	0.04

Figure 2. Item Mean 2014 Survey Administration and Difference in Item Mean from 2011, 2012, and 2013 Survey Administrations



Item Means

The highest item means excluding the Superintendent items are:

- My child's learning is a priority at this school. {4.47}
- This school provides a safe environment for my child to learn. {4.45}
- My child has the necessary classroom supplies and equipment for effective learning. {4.44}

The lowest item means excluding the Superintendent items are:

- I receive positive phone calls or notes about my child from this school. {4.08}
- I regularly receive feedback from school staff on how well my child is learning. {4.15}
- The principal is approachable and reachable. {4.27}

Table 2 shows the means for the two items specifically aligned to the Superintendent's leadership. The means remain steady for each item across the 2013 and 2014 survey administrations.

Table 2. Superintendent Item Means across 2011 - 2014 Survey Administrations

Items	2011	2012	2013	2014
16. The Superintendent is an effective leader.	3.94	3.94	4.16	4.16
17. The Superintendent makes decisions that are in the best interest of children and parents of the district.	3.91	3.92	4.13	4.16

Parent Responses

Figure 3 displays the percentage of responses by item response category. Eighty-five percent responses from the parent survey fell into the “strongly agree” or “agree” categories. This is an increase of 2% responses in these categories since the May 2012 survey administration. There was a 5% increase in responses in the “Strongly Agree” category (48% May 2012 to 53% May 2013). Table 3 shows the number of responses by category across survey administrations.

Figure 3. Percent Responses by Category for 2014 Survey Administration

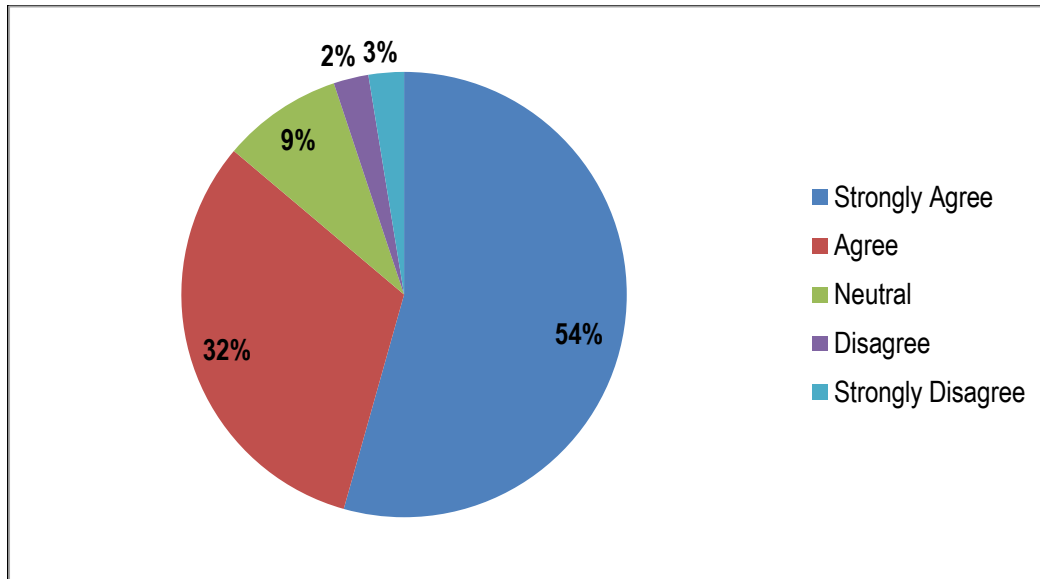


Table 3. Number of Responses by Category and Percent Responses by 2012-2014 Survey Administrations

	Strongly Agree	Agree	Neutral	Disagree	Strongly Disagree
2012 Number of Responses	22,836	16,734	5,563	1,570	1,112
2012 Percent of Total Responses (n=47,815)	48%	35%	12%	3%	2%
2013 Number of Responses	59,010	36,037	11,191	2,886	1,925
2012 Percent of Total Responses (n=111,049)	53%	32%	10%	3%	2%
2014 Number of Responses	67,169	39,270	10,792	3,139	3,173
2012 Percent of Total Responses (n=123,543)	54%	32%	9%	3%	3%

Note: Percentages may not add to 100 due to rounding.

The number of respondents for each school is provided in the table that follows. Each school with fewer than 10 respondents is designated with an asterisk.

Table 4. Number of Responses by School across 2011 – 2014 Survey Administrations

School	2011	2012	2013	2014
A.K. Suter	13	2	181	111
Bellview Elementary	80	4	385	295
Bellview Middle	14	5	143	11
Beulah	178	22	253	303
Blue Angels	330	7	247	237
Booker T. Washington	178	13	482	29
Bratt	206	86	64	190
Brentwood	144	2	113	170
Brown Barge	23	14	50	68
C.A. Weis	141	118	84	57
*Camelot	4	0	1	0
Cordova Park	73	17	117	105
Ensley	66	74	112	116
Ernest Ward	31	3	119	52
Escambia High	23	14	21	27
Escambia Westgate	87	3	0	65
Ferry Pass Elementary	155	19	179	188
Ferry Pass Middle	164	376	365	332
*George Stone	0	0	1	1
Global Learning Academy	14	325	336	270
Hellen Caro	445	40	301	410
Holm	5	118	122	82
J.M. Tate	49	27	65	97
Jim Allen	13	10	216	188
Jim C. Bailey	157	42	346	110
*Judy Andrews	2	0	0	1
Lincoln Park	55	107	89	38
Longleaf	363	217	142	366
McArthur	6	7	52	214
McMillan Center	63	2	53	59
Molino Park	32	24	9	138
Montclair	95	0	41	56
Myrtle Grove	18	71	67	207
N.B. Cook	38	61	46	99
Navy Point	216	170	225	153

Table Continued on Next Page

Table 4. Number of Responses by School across 2011 – 2014 Survey Administrations*Continued*

School	2011	2012	2013	2014
Northview	34	7	84	60
O.J. Semmes	59	1	82	86
Oakcrest	186	235	142	248
Pats Center	3	3	16	18
Pensacola High	102	10	94	35
Pine Forest	114	12	89	98
Pine Meadow	329	40	260	238
Pleasant Grove	17	35	70	159
R.C. Lipscomb	33	19	213	220
Ransom	65	57	15	108
Scenic Heights	330	13	16	400
Sherwood	82	191	190	207
Warrington Elementary	7	95	56	42
Warrington Middle	32	119	78	48
West Florida Tech	118	28	88	235
West Pensacola	7	20	88	203
*Woodham Middle	14	39	45	9
Workman Middle	40	34	51	61

Table 5. Overall Mean by School across 2011 – 2014 Survey Administrations

School	Mean 2011	Mean 2012	Mean 2013	Mean 2014
A.K. Suter	4.56	n = 2	4.62	4.57
Bellview Elementary	3.99	n = 4	4.18	4.28
Bellview Middle	2.42	3.56	4.05	2.84
Beulah	4.50	4.02	4.59	4.50
Blue Angels	4.51	3.63	4.60	4.61
Booker T. Washington	3.93	3.68	3.69	3.38
Bratt	4.44	4.33	4.65	4.48
Brentwood	4.38	n = 2	4.47	4.46
Brown Barge	3.98	3.63	4.49	4.39
C.A. Weis	4.37	4.25	4.42	4.34
Camelot	n = 4	n = 0	n = 1	n = 0
Cordova Park	4.49	4.07	4.63	4.56
Ensley	4.45	4.48	4.67	4.45
Ernest Ward	4.24	n = 3	4.08	4.10
Escambia High	3.67	3.35	3.57	3.10
Escambia Westgate	4.29	n = 3	n = 0	4.61

Table Continued on Next Page

Table 5. Overall Mean by School across 2011 – 2014 Survey Administrations*Continued*

School	Mean 2011	Mean 2012	Mean 2013	Mean 2014
Ferry Pass Elementary	4.36	4.33	4.34	4.29
Ferry Pass Middle	3.93	4.01	4.14	4.07
George Stone	n = 0	n = 0	n = 1	n = 1
Global Learning Academy	4.38	4.39	4.46	4.32
Hellen Caro	4.52	4.43	4.56	4.47
Holm	3.35	4.30	4.37	4.38
J.M. Tate	3.84	3.52	4.09	3.80
Jim Allen	4.63	4.15	4.65	4.68
Jim C. Bailey	4.01	3.76	4.20	3.76
Judy Andrews	n = 2	n = 0	n = 0	n = 1
Lincoln Park	4.04	4.32	4.36	4.56
Longleaf	4.34	4.25	4.36	4.30
McArthur	4.69	4.23	4.55	4.50
McMillan Center	4.60	n = 2	4.64	4.74
Molino Park	4.59	4.58	4.72	4.62
Montclair	4.07	n = 0	4.16	4.06
Myrtle Grove	4.29	4.60	4.59	4.44
N.B. Cook	4.37	4.53	4.65	4.53
Navy Point	4.37	4.40	4.46	3.24
Northview	3.99	3.29	4.06	3.78
O.J. Semmes	3.93	n = 1	4.18	4.25
Oakcrest	4.48	4.36	4.44	4.47
PATS Center	n = 3	n = 3	4.59	4.56
Pensacola High	3.67	3.12	3.62	3.05
Pine Forest	3.42	2.79	4.39	4.54
Pine Meadow	4.43	4.12	4.44	4.52
Pleasant Grove	4.55	3.95	4.49	4.50
R.C. Lipscomb	4.69	4.49	4.55	4.52
Ransom	4.11	4.15	4.35	3.96
Scenic Heights	4.39	4.34	4.19	4.42
Sherwood	4.42	4.34	4.46	4.42
Warrington Elementary	2.87	4.13	4.15	4.58
Warrington Middle	4.15	4.17	4.31	4.31
West Florida Tech	4.03	4.34	4.05	3.93
West Pensacola	4.32	4.35	4.39	4.33
Woodham Middle	4.21	3.92	3.26	3.73
Workman Middle	3.63	3.25	4.11	3.23

Appendix 1 and 2 follow. Appendix 1 provides the mean scores by item by school-level or special center in Escambia County District Schools. Appendix 2 provides the mean scores for each school and special center.

APPENDIX 1

Pre-K/Elementary, Middle School, High School, and Special Centers Results

Pre-K/Elementary

	Mean 2011	Mean 2012	Mean 2013	Mean 2014
Overall Mean	4.40	4.33	4.47	4.41
1. My child's learning is a high priority at this school.	4.58	4.48	4.59	4.53
2. School rules/discipline plans are enforced consistently at this school.	4.45	4.34	4.47	4.42
3. I regularly receive feedback from school staff on how well my child is learning.	4.39	4.36	4.42	4.34
4. My family is treated with respect at this school.	4.50	4.43	4.57	4.50
5. My child has every opportunity to be successful at this school.	4.48	4.39	4.52	4.45
6. My child has the necessary classroom supplies and equipment for effective learning.	4.52	4.42	4.55	4.50
7. I would recommend this school to other parents.	4.51	4.33	4.49	4.44
8. This school provides a safe environment for my child to learn.	4.55	4.45	4.56	4.52
9. My child is recognized for good work and behavior at this school.	4.49	4.44	4.57	4.50
10. The school is clean and well maintained.	4.51	4.45	4.54	4.50
11. The teachers, staff, and administration at this school demonstrate a genuine concern for my child.	4.49	4.40	4.51	4.47
12. I am proud to say I have a child at this school.	4.52	4.40	4.52	4.46
13. I receive positive phone calls or notes about my child from the school.	4.24	4.22	4.33	4.27
14. The principal at this school is approachable and reachable.	4.27	4.27	4.40	4.34
15. The principal at this school is an effective leader.	4.30	4.27	4.45	4.37
16. The Superintendent of the Escambia School District is an effective leader.	4.00	3.99	4.25	4.21
17. The Superintendent of the Escambia School District makes decisions that are in the best interest of children and parents of the district.	3.98	3.98	4.24	4.21

Middle Schools

	Mean 2011	Mean 2012	Mean 2013	Mean 2014
Overall Mean	3.97	3.98	4.13	3.97
1. My child's learning is a high priority at this school.	4.24	4.18	4.34	4.21
2. School rules/discipline plans are enforced consistently at this school.	4.07	4.03	4.21	4.02
3. I regularly receive feedback from school staff on how well my child is learning.	3.52	3.49	3.68	3.41
4. My family is treated with respect at this school.	4.12	4.17	4.31	4.20
5. My child has every opportunity to be successful at this school.	4.12	4.18	4.29	4.11
6. My child has the necessary classroom supplies and equipment for effective learning.	4.17	4.18	4.30	4.15
7. I would recommend this school to other parents.	4.08	4.06	4.21	4.04
8. This school provides a safe environment for my child to learn.	4.13	4.10	4.24	4.08
9. My child is recognized for good work and behavior at this school.	3.95	3.97	4.14	3.96
10. The school is clean and well maintained.	4.14	4.09	4.22	4.07
11. The teachers, staff, and administration at this school demonstrate a genuine concern for my child.	3.98	3.98	4.13	3.99
12. I am proud to say I have a child at this school.	4.05	4.07	4.19	4.02
13. I receive positive phone calls or notes about my child from the school.	3.38	3.49	3.63	3.34
14. The principal at this school is approachable and reachable.	4.03	4.04	4.12	4.03
15. The principal at this school is an effective leader.	4.05	4.06	4.20	4.07
16. The Superintendent of the Escambia School District is an effective leader.	3.74	3.83	4.08	3.90
17. The Superintendent of the Escambia School District makes decisions that are in the best interest of children and parents of the district.	3.70	3.79	4.04	3.90

High Schools

	Mean 2011	Mean 2012	Mean 2013	Mean 2014
Overall Mean	3.80	3.62	3.84	3.88
1. My child's learning is a high priority at this school.	4.18	3.94	4.18	4.15
2. School rules/discipline plans are enforced consistently at this school.	3.95	3.79	3.95	3.98
3. I regularly receive feedback from school staff on how well my child is learning.	3.22	2.92	3.25	3.23
4. My family is treated with respect at this school.	4.00	3.91	3.96	4.02
5. My child has every opportunity to be successful at this school.	4.08	3.82	4.11	4.04
6. My child has the necessary classroom supplies and equipment for effective learning.	3.96	3.82	4.06	4.10
7. I would recommend this school to other parents.	4.00	3.78	3.95	4.05
8. This school provides a safe environment for my child to learn.	3.98	3.81	3.91	4.13
9. My child is recognized for good work and behavior at this school.	3.77	3.61	3.74	3.78
10. The school is clean and well maintained.	3.79	3.63	3.53	3.98
11. The teachers, staff, and administration at this school demonstrate a genuine concern for my child.	3.85	3.58	3.78	3.89
12. I am proud to say I have a child at this school.	4.06	3.85	3.99	4.06
13. I receive positive phone calls or notes about my child from the school.	2.97	2.81	3.25	3.13
14. The principal at this school is approachable and reachable.	3.66	3.57	3.98	3.79
15. The principal at this school is an effective leader.	3.82	3.60	4.06	3.79
16. The Superintendent of the Escambia School District is an effective leader.	3.68	3.63	3.84	3.95
17. The Superintendent of the Escambia School District makes decisions that are in the best interest of children and parents of the district.	3.62	3.48	3.74	3.95

Specialty Centers

	Mean 2011	Mean 2012	Mean 2013	Mean 2014
Overall Mean	4.41	3.50	4.61	4.63
1. My child's learning is a high priority at this school.	4.56	3.50	4.78	4.67
2. School rules/discipline plans are enforced consistently at this school.	4.29	3.33	4.57	4.55
3. I regularly receive feedback from school staff on how well my child is learning.	4.35	3.50	4.44	4.60
4. My family is treated with respect at this school.	4.56	3.33	4.74	4.73
5. My child has every opportunity to be successful at this school.	4.52	3.50	4.72	4.69
6. My child has the necessary classroom supplies and equipment for effective learning.	4.46	3.50	4.64	4.68
7. I would recommend this school to other parents.	4.56	3.50	4.83	4.74
8. This school provides a safe environment for my child to learn.	4.62	3.67	4.67	4.72
9. My child is recognized for good work and behavior at this school.	4.45	3.33	4.62	4.68
10. The school is clean and well maintained.	4.55	3.50	4.49	4.66
11. The teachers, staff, and administration at this school demonstrate a genuine concern for my child.	4.55	3.33	4.59	4.73
12. I am proud to say I have a child at this school.	4.61	3.83	4.70	4.77
13. I receive positive phone calls or notes about my child from the school.	4.28	3.33	4.53	4.63
14. The principal at this school is approachable and reachable.	4.25	3.67	4.71	4.54
15. The principal at this school is an effective leader.	4.33	3.33	4.60	4.60
16. The Superintendent of the Escambia School District is an effective leader.	4.02	3.67	4.43	4.36
17. The Superintendent of the Escambia School District makes decisions that are in the best interest of children and parents of the district.	3.94	3.67	4.37	4.39

APPENDIX 2

School Results

Note: Schools with fewer than 20 respondents were not included in 2011-2012 survey administrations; schools with fewer than 10 respondents not included in 2013-2014 survey administrations.

A.K. Suter Elementary School

	Mean 2011	Mean 2012	Mean 2013	Mean 2014
Overall Mean	n = 13	n = 2	4.62	4.57
1. My child's learning is a high priority at this school.			4.80	4.67
2. School rules/discipline plans are enforced consistently at this school.			4.61	4.59
3. I regularly receive feedback from school staff on how well my child is learning.			4.51	4.42
4. My family is treated with respect at this school.			4.72	4.71
5. My child has every opportunity to be successful at this school.			4.65	4.60
6. My child has the necessary classroom supplies and equipment for effective learning.			4.61	4.63
7. I would recommend this school to other parents.			4.72	4.80
8. This school provides a safe environment for my child to learn.			4.77	4.70
9. My child is recognized for good work and behavior at this school.			4.66	4.67
10. The school is clean and well maintained.			4.62	4.60
11. The teachers, staff, and administration at this school demonstrate a genuine concern for my child.			4.65	4.61
12. I am proud to say I have a child at this school.			4.76	4.74
13. I receive positive phone calls or notes about my child from the school.			4.49	4.39
14. The principal at this school is approachable and reachable.			4.73	4.77
15. The principal at this school is an effective leader.			4.75	4.70
16. The Superintendent of the Escambia School District is an effective leader.			4.26	4.02
17. The Superintendent of the Escambia School District makes decisions that are in the best interest of children and parents of the district.			4.22	4.00

Bellview Elementary School

	Mean 2011	Mean 2012	Mean 2013	Mean 2014
Overall Mean	Missing	n = 4	4.18	4.28
1. My child's learning is a high priority at this school.			4.38	4.45
2. School rules/discipline plans are enforced consistently at this school.			4.26	4.30
3. I regularly receive feedback from school staff on how well my child is learning.			4.01	4.26
4. My family is treated with respect at this school.			4.37	4.38
5. My child has every opportunity to be successful at this school.			4.30	4.31
6. My child has the necessary classroom supplies and equipment for effective learning.			4.40	4.46
7. I would recommend this school to other parents.			4.10	4.25
8. This school provides a safe environment for my child to learn.			4.20	4.33
9. My child is recognized for good work and behavior at this school.			4.33	4.42
10. The school is clean and well maintained.			4.21	4.31
11. The teachers, staff, and administration at this school demonstrate a genuine concern for my child.			4.21	4.33
12. I am proud to say I have a child at this school.			4.14	4.29
13. I receive positive phone calls or notes about my child from the school.			3.87	4.21
14. The principal at this school is approachable and reachable.			4.08	4.13
15. The principal at this school is an effective leader.			4.18	4.19
16. The Superintendent of the Escambia School District is an effective leader.			4.04	4.08
17. The Superintendent of the Escambia School District makes decisions that are in the best interest of children and parents of the district.			4.05	4.07

Beulah Elementary School

	Mean 2011	Mean 2012	Mean 2013	Mean 2014
Overall Mean	n = 14	n = 5	4.59	4.50
1. My child's learning is a high priority at this school.			4.69	4.61
2. School rules/discipline plans are enforced consistently at this school.			4.57	4.50
3. I regularly receive feedback from school staff on how well my child is learning.			4.53	4.44
4. My family is treated with respect at this school.			4.68	4.62
5. My child has every opportunity to be successful at this school.			4.62	4.51
6. My child has the necessary classroom supplies and equipment for effective learning.			4.67	4.62
7. I would recommend this school to other parents.			4.75	4.63
8. This school provides a safe environment for my child to learn.			4.71	4.62
9. My child is recognized for good work and behavior at this school.			4.63	4.55
10. The school is clean and well maintained.			4.64	4.58
11. The teachers, staff, and administration at this school demonstrate a genuine concern for my child.			4.59	4.55
12. I am proud to say I have a child at this school.			4.70	4.60
13. I receive positive phone calls or notes about my child from the school.			4.47	4.35
14. The principal at this school is approachable and reachable.			4.55	4.30
15. The principal at this school is an effective leader.			4.56	4.33
16. The Superintendent of the Escambia School District is an effective leader.			4.32	4.34
17. The Superintendent of the Escambia School District makes decisions that are in the best interest of children and parents of the district.			4.32	4.34

Blue Angels Elementary School

	Mean 2011	Mean 2012	Mean 2013	Mean 2014
Overall Mean	Missing	n = 7	4.60	4.61
1. My child's learning is a high priority at this school.			4.70	4.68
2. School rules/discipline plans are enforced consistently at this school.			4.61	4.68
3. I regularly receive feedback from school staff on how well my child is learning.			4.52	4.45
4. My family is treated with respect at this school.			4.68	4.68
5. My child has every opportunity to be successful at this school.			4.64	4.61
6. My child has the necessary classroom supplies and equipment for effective learning.			4.70	4.66
7. I would recommend this school to other parents.			4.72	4.73
8. This school provides a safe environment for my child to learn.			4.74	4.78
9. My child is recognized for good work and behavior at this school.			4.67	4.64
10. The school is clean and well maintained.			4.72	4.78
11. The teachers, staff, and administration at this school demonstrate a genuine concern for my child.			4.65	4.65
12. I am proud to say I have a child at this school.			4.69	4.73
13. I receive positive phone calls or notes about my child from the school.			4.42	4.39
14. The principal at this school is approachable and reachable.			4.57	4.57
15. The principal at this school is an effective leader.			4.63	4.60
16. The Superintendent of the Escambia School District is an effective leader.			4.36	4.38
17. The Superintendent of the Escambia School District makes decisions that are in the best interest of children and parents of the district.			4.33	4.34

Bratt Elementary School

	Mean 2011	Mean 2012	Mean 2013	Mean 2014
Overall Mean	4.41	4.33	4.65	4.48
1. My child's learning is a high priority at this school.	4.57	4.56	4.77	4.57
2. School rules/discipline plans are enforced consistently at this school.	4.43	4.22	4.65	4.49
3. I regularly receive feedback from school staff on how well my child is learning.	4.39	4.36	4.55	4.33
4. My family is treated with respect at this school.	4.47	4.42	4.65	4.58
5. My child has every opportunity to be successful at this school.	4.50	4.45	4.73	4.55
6. My child has the necessary classroom supplies and equipment for effective learning.	4.46	4.40	4.65	4.60
7. I would recommend this school to other parents.	4.55	4.47	4.73	4.56
8. This school provides a safe environment for my child to learn.	4.51	4.53	4.75	4.59
9. My child is recognized for good work and behavior at this school.	4.44	4.48	4.71	4.58
10. The school is clean and well maintained.	4.49	4.46	4.68	4.54
11. The teachers, staff, and administration at this school demonstrate a genuine concern for my child.	4.55	4.45	4.68	4.53
12. I am proud to say I have a child at this school.	4.60	4.46	4.73	4.57
13. I receive positive phone calls or notes about my child from the school.	4.26	4.20	4.52	4.33
14. The principal at this school is approachable and reachable.	4.37	4.25	4.72	4.51
15. The principal at this school is an effective leader.	4.35	4.14	4.75	4.44
16. The Superintendent of the Escambia School District is an effective leader.	4.01	3.85	4.39	4.20
17. The Superintendent of the Escambia School District makes decisions that are in the best interest of children and parents of the district.	4.00	3.82	4.39	4.24

Brentwood Elementary School

	Mean 2011	Mean 2012	Mean 2013	Mean 2014
Overall Mean	Missing	n = 2	4.47	4.46
1. My child's learning is a high priority at this school.			4.62	4.58
2. School rules/discipline plans are enforced consistently at this school.			4.50	4.49
3. I regularly receive feedback from school staff on how well my child is learning.			4.49	4.38
4. My family is treated with respect at this school.			4.50	4.48
5. My child has every opportunity to be successful at this school.			4.54	4.54
6. My child has the necessary classroom supplies and equipment for effective learning.			4.59	4.61
7. I would recommend this school to other parents.			4.52	4.55
8. This school provides a safe environment for my child to learn.			4.57	4.59
9. My child is recognized for good work and behavior at this school.			4.59	4.53
10. The school is clean and well maintained.			4.58	4.49
11. The teachers, staff, and administration at this school demonstrate a genuine concern for my child.			4.52	4.55
12. I am proud to say I have a child at this school.			4.57	4.57
13. I receive positive phone calls or notes about my child from the school.			4.33	4.21
14. The principal at this school is approachable and reachable.			4.31	4.40
15. The principal at this school is an effective leader.			4.40	4.50
16. The Superintendent of the Escambia School District is an effective leader.			4.14	4.23
17. The Superintendent of the Escambia School District makes decisions that are in the best interest of children and parents of the district.			4.11	4.25

C.A. Weis Elementary School

	Mean 2011	Mean 2012	Mean 2013	Mean 2014
Overall Mean	4.37	4.25	4.42	4.34
1. My child's learning is a high priority at this school.	4.55	4.34	4.42	4.42
2. School rules/discipline plans are enforced consistently at this school.	4.40	4.32	4.45	4.33
3. I regularly receive feedback from school staff on how well my child is learning.	4.32	4.32	4.36	4.37
4. My family is treated with respect at this school.	4.45	4.43	4.45	4.39
5. My child has every opportunity to be successful at this school.	4.50	4.34	4.43	4.35
6. My child has the necessary classroom supplies and equipment for effective learning.	4.48	4.36	4.54	4.39
7. I would recommend this school to other parents.	4.30	4.08	4.31	4.07
8. This school provides a safe environment for my child to learn.	4.50	4.38	4.52	4.39
9. My child is recognized for good work and behavior at this school.	4.45	4.38	4.60	4.40
10. The school is clean and well maintained.	4.50	4.40	4.63	4.54
11. The teachers, staff, and administration at this school demonstrate a genuine concern for my child.	4.45	4.34	4.45	4.49
12. I am proud to say I have a child at this school.	4.39	4.26	4.41	4.28
13. I receive positive phone calls or notes about my child from the school.	4.34	4.14	4.33	4.39
14. The principal at this school is approachable and reachable.	4.14	4.09	4.37	4.39
15. The principal at this school is an effective leader.	4.22	4.11	4.41	4.46
16. The Superintendent of the Escambia School District is an effective leader.	4.08	3.98	4.23	4.05
17. The Superintendent of the Escambia School District makes decisions that are in the best interest of children and parents of the district.	4.14	4.04	4.29	4.07

Cordova Park Elementary School

	Mean 2011	Mean 2012	Mean 2013	Mean 2014
Overall Mean	4.49	4.07	4.63	4.56
1. My child's learning is a high priority at this school.	4.74	4.33	4.79	4.74
2. School rules/discipline plans are enforced consistently at this school.	4.59	4.00	4.66	4.62
3. I regularly receive feedback from school staff on how well my child is learning.	4.40	4.27	4.59	4.50
4. My family is treated with respect at this school.	4.66	4.27	4.72	4.64
5. My child has every opportunity to be successful at this school.	4.54	4.00	4.68	4.55
6. My child has the necessary classroom supplies and equipment for effective learning.	4.67	4.20	4.71	4.64
7. I would recommend this school to other parents.	4.79	4.33	4.78	4.72
8. This school provides a safe environment for my child to learn.	4.76	4.33	4.72	4.61
9. My child is recognized for good work and behavior at this school.	4.59	4.13	4.69	4.52
10. The school is clean and well maintained.	4.66	4.33	4.66	4.54
11. The teachers, staff, and administration at this school demonstrate a genuine concern for my child.	4.63	4.00	4.76	4.61
12. I am proud to say I have a child at this school.	4.74	4.40	4.79	4.75
13. I receive positive phone calls or notes about my child from the school.	4.16	3.60	4.46	4.50
14. The principal at this school is approachable and reachable.	4.09	3.80	4.47	4.51
15. The principal at this school is an effective leader.	4.24	3.87	4.59	4.56
16. The Superintendent of the Escambia School District is an effective leader.	4.03	3.73	4.32	4.31
17. The Superintendent of the Escambia School District makes decisions that are in the best interest of children and parents of the district.	4.01	3.60	4.31	4.27

Ensley Elementary School

	Mean 2011	Mean 2012	Mean 2013	Mean 2014
Overall Mean	4.45	4.48	4.67	4.45
1. My child's learning is a high priority at this school.	4.62	4.67	4.82	4.62
2. School rules/discipline plans are enforced consistently at this school.	4.49	4.61	4.65	4.48
3. I regularly receive feedback from school staff on how well my child is learning.	4.51	4.60	4.67	4.39
4. My family is treated with respect at this school.	4.63	4.58	4.76	4.66
5. My child has every opportunity to be successful at this school.	4.62	4.56	4.76	4.54
6. My child has the necessary classroom supplies and equipment for effective learning.	4.62	4.51	4.67	4.57
7. I would recommend this school to other parents.	4.54	4.48	4.68	4.45
8. This school provides a safe environment for my child to learn.	4.60	4.44	4.71	4.53
9. My child is recognized for good work and behavior at this school.	4.54	4.58	4.78	4.59
10. The school is clean and well maintained.	4.38	4.38	4.67	4.53
11. The teachers, staff, and administration at this school demonstrate a genuine concern for my child.	4.59	4.53	4.71	4.61
12. I am proud to say I have a child at this school.	4.55	4.53	4.70	4.47
13. I receive positive phone calls or notes about my child from the school.	4.32	4.49	4.64	4.35
14. The principal at this school is approachable and reachable.	4.41	4.59	4.69	4.30
15. The principal at this school is an effective leader.	4.41	4.58	4.78	4.37
16. The Superintendent of the Escambia School District is an effective leader.	3.92	4.03	4.36	4.13
17. The Superintendent of the Escambia School District makes decisions that are in the best interest of children and parents of the district.	3.89	4.03	4.34	4.12

Ferry Pass Elementary School

	Mean 2011	Mean 2012	Mean 2013	Mean 2014
Overall Mean	4.36	4.33	4.34	4.29
1. My child's learning is a high priority at this school.	4.61	4.50	4.51	4.45
2. School rules/discipline plans are enforced consistently at this school.	4.45	4.00	4.44	4.42
3. I regularly receive feedback from school staff on how well my child is learning.	4.42	4.56	4.16	4.32
4. My family is treated with respect at this school.	4.47	4.19	4.46	4.27
5. My child has every opportunity to be successful at this school.	4.46	4.44	4.44	4.31
6. My child has the necessary classroom supplies and equipment for effective learning.	4.50	4.56	4.42	4.49
7. I would recommend this school to other parents.	4.39	4.44	4.36	4.29
8. This school provides a safe environment for my child to learn.	4.53	4.44	4.49	4.45
9. My child is recognized for good work and behavior at this school.	4.48	4.50	4.39	4.37
10. The school is clean and well maintained.	4.39	4.19	4.37	4.45
11. The teachers, staff, and administration at this school demonstrate a genuine concern for my child.	4.41	4.38	4.33	4.31
12. I am proud to say I have a child at this school.	4.43	4.38	4.40	4.30
13. I receive positive phone calls or notes about my child from the school.	4.13	4.50	4.12	4.16
14. The principal at this school is approachable and reachable.	4.10	4.13	4.25	4.09
15. The principal at this school is an effective leader.	4.20	4.06	4.26	4.17
16. The Superintendent of the Escambia School District is an effective leader.	4.03	4.19	4.18	3.99
17. The Superintendent of the Escambia School District makes decisions that are in the best interest of children and parents of the district.	4.04	4.13	4.16	4.04

	Mean 2011	Mean 2012	Mean 2013	Mean 2014
Overall Mean	4.38	4.39	4.46	4.32
1. My child's learning is a high priority at this school.	4.62	4.56	4.55	4.49
2. School rules/discipline plans are enforced consistently at this school.	4.46	4.37	4.47	4.38
3. I regularly receive feedback from school staff on how well my child is learning.	4.46	4.37	4.38	4.30
4. My family is treated with respect at this school.	4.23	4.44	4.59	4.40
5. My child has every opportunity to be successful at this school.	4.38	4.47	4.52	4.39
6. My child has the necessary classroom supplies and equipment for effective learning.	4.62	4.51	4.57	4.48
7. I would recommend this school to other parents.	4.54	4.37	4.44	4.21
8. This school provides a safe environment for my child to learn.	4.38	4.50	4.57	4.45
9. My child is recognized for good work and behavior at this school.	4.00	4.46	4.59	4.44
10. The school is clean and well maintained.	4.46	4.69	4.67	4.63
11. The teachers, staff, and administration at this school demonstrate a genuine concern for my child.	4.54	4.47	4.49	4.30
12. I am proud to say I have a child at this school.	4.46	4.46	4.50	4.21
13. I receive positive phone calls or notes about my child from the school.	3.77	4.26	4.36	4.13
14. The principal at this school is approachable and reachable.	4.58	4.28	4.32	4.17
15. The principal at this school is an effective leader.	4.58	4.32	4.40	4.23
16. The Superintendent of the Escambia School District is an effective leader.	4.09	4.04	4.20	4.15
17. The Superintendent of the Escambia School District makes decisions that are in the best interest of children and parents of the district.	4.18	4.04	4.24	4.14

Hellen Caro Elementary School

	Mean 2011	Mean 2012	Mean 2013	Mean 2014
Overall Mean	4.52	4.43	4.56	4.47
1. My child's learning is a high priority at this school.	4.71	4.65	4.68	4.62
2. School rules/discipline plans are enforced consistently at this school.	4.57	4.53	4.53	4.46
3. I regularly receive feedback from school staff on how well my child is learning.	4.47	4.45	4.55	4.37
4. My family is treated with respect at this school.	4.59	4.60	4.64	4.57
5. My child has every opportunity to be successful at this school.	4.60	4.43	4.60	4.53
6. My child has the necessary classroom supplies and equipment for effective learning.	4.59	4.45	4.61	4.53
7. I would recommend this school to other parents.	4.75	4.68	4.74	4.63
8. This school provides a safe environment for my child to learn.	4.73	4.65	4.71	4.65
9. My child is recognized for good work and behavior at this school.	4.62	4.68	4.71	4.58
10. The school is clean and well maintained.	4.62	4.28	4.58	4.49
11. The teachers, staff, and administration at this school demonstrate a genuine concern for my child.	4.62	4.50	4.64	4.51
12. I am proud to say I have a child at this school.	4.71	4.58	4.73	4.62
13. I receive positive phone calls or notes about my child from the school.	4.36	4.33	4.45	4.26
14. The principal at this school is approachable and reachable.	4.37	4.38	4.38	4.29
15. The principal at this school is an effective leader.	4.42	4.35	4.45	4.39
16. The Superintendent of the Escambia School District is an effective leader.	4.04	4.00	4.27	4.26
17. The Superintendent of the Escambia School District makes decisions that are in the best interest of children and parents of the district.	4.03	3.88	4.30	4.28

Holm Elementary School

	Mean 2011	Mean 2012	Mean 2013	Mean 2014
Overall Mean	3.35	4.30	4.37	4.38
1. My child's learning is a high priority at this school.	3.50	4.44	4.48	4.52
2. School rules/discipline plans are enforced consistently at this school.	2.75	4.39	4.30	4.31
3. I regularly receive feedback from school staff on how well my child is learning.	3.75	4.44	4.40	4.53
4. My family is treated with respect at this school.	4.00	4.47	4.60	4.49
5. My child has every opportunity to be successful at this school.	3.75	4.38	4.39	4.40
6. My child has the necessary classroom supplies and equipment for effective learning.	3.25	4.43	4.40	4.46
7. I would recommend this school to other parents.	3.00	4.14	4.30	4.40
8. This school provides a safe environment for my child to learn.	3.25	4.38	4.43	4.36
9. My child is recognized for good work and behavior at this school.	3.75	4.43	4.41	4.46
10. The school is clean and well maintained.	2.75	4.36	4.44	4.41
11. The teachers, staff, and administration at this school demonstrate a genuine concern for my child.	3.75	4.30	4.51	4.49
12. I am proud to say I have a child at this school.	3.25	4.33	4.32	4.33
13. I receive positive phone calls or notes about my child from the school.	3.75	4.26	4.37	4.35
14. The principal at this school is approachable and reachable.	3.50	4.36	4.43	4.38
15. The principal at this school is an effective leader.	3.25	4.27	4.39	4.30
16. The Superintendent of the Escambia School District is an effective leader.	2.75	3.85	4.09	4.10
17. The Superintendent of the Escambia School District makes decisions that are in the best interest of children and parents of the district.	3.00	3.80	4.00	4.13

Jim Allen Elementary School

	Mean 2011	Mean 2012	Mean 2013	Mean 2014
Overall Mean	n = 13	n = 10	4.65	4.68
1. My child's learning is a high priority at this school.			4.75	4.75
2. School rules/discipline plans are enforced consistently at this school.			4.57	4.61
3. I regularly receive feedback from school staff on how well my child is learning.			4.60	4.56
4. My family is treated with respect at this school.			4.73	4.75
5. My child has every opportunity to be successful at this school.			4.75	4.72
6. My child has the necessary classroom supplies and equipment for effective learning.			4.65	4.75
7. I would recommend this school to other parents.			4.73	4.72
8. This school provides a safe environment for my child to learn.			4.72	4.72
9. My child is recognized for good work and behavior at this school.			4.66	4.75
10. The school is clean and well maintained.			4.68	4.74
11. The teachers, staff, and administration at this school demonstrate a genuine concern for my child.			4.72	4.76
12. I am proud to say I have a child at this school.			4.73	4.73
13. I receive positive phone calls or notes about my child from the school.			4.46	4.55
14. The principal at this school is approachable and reachable.			4.66	4.65
15. The principal at this school is an effective leader.			4.69	4.69
16. The Superintendent of the Escambia School District is an effective leader.			4.50	4.55
17. The Superintendent of the Escambia School District makes decisions that are in the best interest of children and parents of the district.			4.44	4.52

Lincoln Park Elementary School

	Mean 2011	Mean 2012	Mean 2013	Mean 2014
Overall Mean	4.04	4.32	4.36	4.56
1. My child's learning is a high priority at this school.	4.32	4.49	4.48	4.63
2. School rules/discipline plans are enforced consistently at this school.	4.17	4.33	4.23	4.55
3. I regularly receive feedback from school staff on how well my child is learning.	3.89	4.27	4.30	4.55
4. My family is treated with respect at this school.	4.34	4.51	4.52	4.68
5. My child has every opportunity to be successful at this school.	4.13	4.36	4.42	4.57
6. My child has the necessary classroom supplies and equipment for effective learning.	4.22	4.37	4.46	4.61
7. I would recommend this school to other parents.	4.09	4.28	4.19	4.35
8. This school provides a safe environment for my child to learn.	4.21	4.36	4.30	4.59
9. My child is recognized for good work and behavior at this school.	3.89	4.39	4.45	4.63
10. The school is clean and well maintained.	4.34	4.50	4.47	4.68
11. The teachers, staff, and administration at this school demonstrate a genuine concern for my child.	4.15	4.37	4.44	4.58
12. I am proud to say I have a child at this school.	4.19	4.35	4.33	4.45
13. I receive positive phone calls or notes about my child from the school.	3.63	4.26	4.27	4.47
14. The principal at this school is approachable and reachable.	3.96	4.39	4.36	4.61
15. The principal at this school is an effective leader.	3.94	4.41	4.44	4.58
16. The Superintendent of the Escambia School District is an effective leader.	3.64	3.93	4.19	4.36
17. The Superintendent of the Escambia School District makes decisions that are in the best interest of children and parents of the district.	3.60	3.88	4.22	4.49

Longleaf Elementary School

	Mean 2011	Mean 2012	Mean 2013	Mean 2014
Overall Mean	4.34	4.25	4.36	4.30
1. My child's learning is a high priority at this school.	4.50	4.38	4.53	4.47
2. School rules/discipline plans are enforced consistently at this school.	4.37	4.33	4.34	4.25
3. I regularly receive feedback from school staff on how well my child is learning.	4.38	4.33	4.35	4.16
4. My family is treated with respect at this school.	4.53	4.38	4.48	4.35
5. My child has every opportunity to be successful at this school.	4.45	4.31	4.47	4.34
6. My child has the necessary classroom supplies and equipment for effective learning.	4.51	4.34	4.46	4.43
7. I would recommend this school to other parents.	4.42	4.27	4.36	4.27
8. This school provides a safe environment for my child to learn.	4.49	4.44	4.45	4.38
9. My child is recognized for good work and behavior at this school.	4.43	4.34	4.48	4.45
10. The school is clean and well maintained.	4.49	4.41	4.47	4.47
11. The teachers, staff, and administration at this school demonstrate a genuine concern for my child.	4.45	4.34	4.38	4.35
12. I am proud to say I have a child at this school.	4.44	4.35	4.35	4.32
13. I receive positive phone calls or notes about my child from the school.	4.27	4.14	4.24	4.20
14. The principal at this school is approachable and reachable.	4.10	4.08	4.33	4.24
15. The principal at this school is an effective leader.	4.10	4.11	4.31	4.26
16. The Superintendent of the Escambia School District is an effective leader.	3.92	3.85	4.06	4.12
17. The Superintendent of the Escambia School District makes decisions that are in the best interest of children and parents of the district.	3.90	3.85	4.09	4.12

McArthur Elementary School

	Mean 2011	Mean 2012	Mean 2013	Mean 2014
Overall Mean	n = 6	n = 7	4.55	4.50
1. My child's learning is a high priority at this school.			4.58	4.62
2. School rules/discipline plans are enforced consistently at this school.			4.51	4.45
3. I regularly receive feedback from school staff on how well my child is learning.			4.54	4.48
4. My family is treated with respect at this school.			4.56	4.60
5. My child has every opportunity to be successful at this school.			4.66	4.55
6. My child has the necessary classroom supplies and equipment for effective learning.			4.68	4.60
7. I would recommend this school to other parents.			4.58	4.50
8. This school provides a safe environment for my child to learn.			4.66	4.54
9. My child is recognized for good work and behavior at this school.			4.66	4.63
10. The school is clean and well maintained.			4.68	4.60
11. The teachers, staff, and administration at this school demonstrate a genuine concern for my child.			4.52	4.59
12. I am proud to say I have a child at this school.			4.60	4.56
13. I receive positive phone calls or notes about my child from the school.			4.49	4.45
14. The principal at this school is approachable and reachable.			4.53	4.46
15. The principal at this school is an effective leader.			4.53	4.46
16. The Superintendent of the Escambia School District is an effective leader.			4.31	4.25
17. The Superintendent of the Escambia School District makes decisions that are in the best interest of children and parents of the district.			4.27	4.22

Molino Park Elementary School

	Mean 2011	Mean 2012	Mean 2013	Mean 2014
Overall Mean	4.59	4.58	n = 9	4.62
1. My child's learning is a high priority at this school.	4.77	4.74		4.67
2. School rules/discipline plans are enforced consistently at this school.	4.59	4.39		4.59
3. I regularly receive feedback from school staff on how well my child is learning.	4.59	4.48		4.42
4. My family is treated with respect at this school.	4.62	4.65		4.76
5. My child has every opportunity to be successful at this school.	4.69	4.65		4.65
6. My child has the necessary classroom supplies and equipment for effective learning.	4.72	4.65		4.57
7. I would recommend this school to other parents.	4.72	4.68		4.66
8. This school provides a safe environment for my child to learn.	4.72	4.74		4.80
9. My child is recognized for good work and behavior at this school.	4.79	4.61		4.64
10. The school is clean and well maintained.	4.79	4.91		4.77
11. The teachers, staff, and administration at this school demonstrate a genuine concern for my child.	4.69	4.65		4.71
12. I am proud to say I have a child at this school.	4.72	4.70		4.71
13. I receive positive phone calls or notes about my child from the school.	4.21	4.13		4.31
14. The principal at this school is approachable and reachable.	4.45	4.43		4.69
15. The principal at this school is an effective leader.	4.50	4.35		4.65
16. The Superintendent of the Escambia School District is an effective leader.	4.25	4.57		4.50
17. The Superintendent of the Escambia School District makes decisions that are in the best interest of children and parents of the district.	4.11	4.48		4.49

Montclair Elementary School

	Mean 2011	Mean 2012	Mean 2013	Mean 2014
Overall Mean	Missing	n = 0	4.16	4.06
1. My child's learning is a high priority at this school.			4.37	4.30
2. School rules/discipline plans are enforced consistently at this school.			4.15	4.09
3. I regularly receive feedback from school staff on how well my child is learning.			4.26	4.14
4. My family is treated with respect at this school.			4.34	4.24
5. My child has every opportunity to be successful at this school.			4.03	4.18
6. My child has the necessary classroom supplies and equipment for effective learning.			4.10	4.09
7. I would recommend this school to other parents.			3.71	3.75
8. This school provides a safe environment for my child to learn.			3.98	3.96
9. My child is recognized for good work and behavior at this school.			4.32	4.21
10. The school is clean and well maintained.			4.33	4.18
11. The teachers, staff, and administration at this school demonstrate a genuine concern for my child.			4.15	3.98
12. I am proud to say I have a child at this school.			4.08	4.02
13. I receive positive phone calls or notes about my child from the school.			4.17	3.98
14. The principal at this school is approachable and reachable.			4.18	4.13
15. The principal at this school is an effective leader.			4.25	4.07
16. The Superintendent of the Escambia School District is an effective leader.			4.18	3.82
17. The Superintendent of the Escambia School District makes decisions that are in the best interest of children and parents of the district.			4.05	3.86

Myrtle Grove Elementary School

	Mean 2011	Mean 2012	Mean 2013	Mean 2014
Overall Mean	n = 18	4.60	4.59	4.44
1. My child's learning is a high priority at this school.		4.72	4.60	4.52
2. School rules/discipline plans are enforced consistently at this school.		4.65	4.51	4.41
3. I regularly receive feedback from school staff on how well my child is learning.		4.56	4.73	4.45
4. My family is treated with respect at this school.		4.74	4.76	4.55
5. My child has every opportunity to be successful at this school.		4.65	4.66	4.51
6. My child has the necessary classroom supplies and equipment for effective learning.		4.60	4.69	4.46
7. I would recommend this school to other parents.		4.74	4.61	4.43
8. This school provides a safe environment for my child to learn.		4.65	4.57	4.49
9. My child is recognized for good work and behavior at this school.		4.76	4.69	4.57
10. The school is clean and well maintained.		4.66	4.57	4.47
11. The teachers, staff, and administration at this school demonstrate a genuine concern for my child.		4.75	4.75	4.58
12. I am proud to say I have a child at this school.		4.75	4.69	4.44
13. I receive positive phone calls or notes about my child from the school.		4.55	4.56	4.31
14. The principal at this school is approachable and reachable.		4.59	4.66	4.42
15. The principal at this school is an effective leader.		4.54	4.65	4.44
16. The Superintendent of the Escambia School District is an effective leader.		4.20	4.19	4.20
17. The Superintendent of the Escambia School District makes decisions that are in the best interest of children and parents of the district.		4.07	4.12	4.20

N.B. Cook Elementary School

	Mean 2011	Mean 2012	Mean 2013	Mean 2014
Overall Mean	4.37	4.53	4.65	4.53
1. My child's learning is a high priority at this school.	4.50	4.76	4.88	4.71
2. School rules/discipline plans are enforced consistently at this school.	4.47	4.62	4.62	4.48
3. I regularly receive feedback from school staff on how well my child is learning.	4.28	4.42	4.55	4.46
4. My family is treated with respect at this school.	4.53	4.64	4.74	4.64
5. My child has every opportunity to be successful at this school.	4.44	4.57	4.74	4.61
6. My child has the necessary classroom supplies and equipment for effective learning.	4.29	4.65	4.69	4.54
7. I would recommend this school to other parents.	4.53	4.73	4.81	4.74
8. This school provides a safe environment for my child to learn.	4.63	4.71	4.71	4.71
9. My child is recognized for good work and behavior at this school.	4.34	4.53	4.71	4.64
10. The school is clean and well maintained.	4.53	4.73	4.57	4.58
11. The teachers, staff, and administration at this school demonstrate a genuine concern for my child.	4.44	4.64	4.74	4.55
12. I am proud to say I have a child at this school.	4.50	4.75	4.81	4.74
13. I receive positive phone calls or notes about my child from the school.	4.03	3.98	4.45	4.18
14. The principal at this school is approachable and reachable.	4.50	4.65	4.81	4.69
15. The principal at this school is an effective leader.	4.44	4.67	4.74	4.63
16. The Superintendent of the Escambia School District is an effective leader.	3.94	3.96	4.26	4.05
17. The Superintendent of the Escambia School District makes decisions that are in the best interest of children and parents of the district.	3.84	3.94	4.29	4.14

Navy Point Elementary School

	Mean 2011	Mean 2012	Mean 2013	Mean 2014
Overall Mean	4.37	4.40	4.46	3.24
1. My child's learning is a high priority at this school.	4.52	4.55	4.57	3.29
2. School rules/discipline plans are enforced consistently at this school.	4.44	4.40	4.40	3.12
3. I regularly receive feedback from school staff on how well my child is learning.	4.31	4.49	4.52	3.14
4. My family is treated with respect at this school.	4.44	4.45	4.48	3.24
5. My child has every opportunity to be successful at this school.	4.47	4.46	4.48	3.26
6. My child has the necessary classroom supplies and equipment for effective learning.	4.51	4.44	4.53	3.31
7. I would recommend this school to other parents.	4.41	4.41	4.40	3.16
8. This school provides a safe environment for my child to learn.	4.48	4.50	4.53	3.29
9. My child is recognized for good work and behavior at this school.	4.45	4.52	4.54	3.33
10. The school is clean and well maintained.	4.54	4.45	4.55	3.39
11. The teachers, staff, and administration at this school demonstrate a genuine concern for my child.	4.47	4.42	4.50	3.23
12. I am proud to say I have a child at this school.	4.48	4.43	4.44	3.22
13. I receive positive phone calls or notes about my child from the school.	4.25	4.36	4.46	3.21
14. The principal at this school is approachable and reachable.	4.23	4.31	4.42	3.26
15. The principal at this school is an effective leader.	4.27	4.30	4.43	3.23
16. The Superintendent of the Escambia School District is an effective leader.	4.02	4.12	4.33	3.13
17. The Superintendent of the Escambia School District makes decisions that are in the best interest of children and parents of the district.	3.99	4.13	4.30	3.12

Oakcrest Elementary School

	Mean 2011	Mean 2012	Mean 2013	Mean 2014
Overall Mean	4.48	4.36	4.44	4.47
1. My child's learning is a high priority at this school.	4.61	4.45	4.50	4.54
2. School rules/discipline plans are enforced consistently at this school.	4.51	4.35	4.46	4.46
3. I regularly receive feedback from school staff on how well my child is learning.	4.44	4.32	4.37	4.38
4. My family is treated with respect at this school.	4.50	4.37	4.54	4.54
5. My child has every opportunity to be successful at this school.	4.54	4.45	4.50	4.48
6. My child has the necessary classroom supplies and equipment for effective learning.	4.58	4.44	4.55	4.49
7. I would recommend this school to other parents.	4.51	4.32	4.45	4.40
8. This school provides a safe environment for my child to learn.	4.47	4.42	4.59	4.59
9. My child is recognized for good work and behavior at this school.	4.55	4.48	4.50	4.54
10. The school is clean and well maintained.	4.56	4.49	4.55	4.60
11. The teachers, staff, and administration at this school demonstrate a genuine concern for my child.	4.51	4.47	4.50	4.52
12. I am proud to say I have a child at this school.	4.51	4.42	4.49	4.49
13. I receive positive phone calls or notes about my child from the school.	4.38	4.27	4.23	4.40
14. The principal at this school is approachable and reachable.	4.38	4.28	4.45	4.47
15. The principal at this school is an effective leader.	4.48	4.34	4.45	4.49
16. The Superintendent of the Escambia School District is an effective leader.	4.27	4.08	4.25	4.32
17. The Superintendent of the Escambia School District makes decisions that are in the best interest of children and parents of the district.	4.27	4.12	4.26	4.37

O.J. Semmes Elementary School

	Mean 2011	Mean 2012	Mean 2013	Mean 2014
Overall Mean	Missing	n = 1	4.18	4.25
1. My child's learning is a high priority at this school.			4.31	4.38
2. School rules/discipline plans are enforced consistently at this school.			4.31	4.36
3. I regularly receive feedback from school staff on how well my child is learning.			4.29	4.34
4. My family is treated with respect at this school.			4.25	4.32
5. My child has every opportunity to be successful at this school.			4.35	4.31
6. My child has the necessary classroom supplies and equipment for effective learning.			4.44	4.33
7. I would recommend this school to other parents.			3.98	4.07
8. This school provides a safe environment for my child to learn.			4.28	4.38
9. My child is recognized for good work and behavior at this school.			4.47	4.35
10. The school is clean and well maintained.			4.04	4.22
11. The teachers, staff, and administration at this school demonstrate a genuine concern for my child.			4.16	4.40
12. I am proud to say I have a child at this school.			4.09	4.19
13. I receive positive phone calls or notes about my child from the school.			4.14	4.19
14. The principal at this school is approachable and reachable.			3.98	4.14
15. The principal at this school is an effective leader.			4.10	4.21
16. The Superintendent of the Escambia School District is an effective leader.			3.96	4.11
17. The Superintendent of the Escambia School District makes decisions that are in the best interest of children and parents of the district.			3.98	4.10

Pine Meadow Elementary School

	Mean 2011	Mean 2012	Mean 2013	Mean 2014
Overall Mean	4.43	4.12	4.44	4.52
1. My child's learning is a high priority at this school.	4.64	4.26	4.53	4.65
2. School rules/discipline plans are enforced consistently at this school.	4.45	4.08	4.49	4.57
3. I regularly receive feedback from school staff on how well my child is learning.	4.46	4.28	4.38	4.43
4. My family is treated with respect at this school.	4.50	4.21	4.49	4.52
5. My child has every opportunity to be successful at this school.	4.50	4.08	4.44	4.55
6. My child has the necessary classroom supplies and equipment for effective learning.	4.49	3.94	4.45	4.55
7. I would recommend this school to other parents.	4.58	4.14	4.55	4.61
8. This school provides a safe environment for my child to learn.	4.58	4.14	4.56	4.66
9. My child is recognized for good work and behavior at this school.	4.50	4.28	4.53	4.56
10. The school is clean and well maintained.	4.43	4.00	4.46	4.52
11. The teachers, staff, and administration at this school demonstrate a genuine concern for my child.	4.54	4.19	4.51	4.56
12. I am proud to say I have a child at this school.	4.58	4.17	4.54	4.62
13. I receive positive phone calls or notes about my child from the school.	4.29	4.06	4.27	4.33
14. The principal at this school is approachable and reachable.	4.34	4.28	4.42	4.40
15. The principal at this school is an effective leader.	4.34	4.09	4.43	4.47
16. The Superintendent of the Escambia School District is an effective leader.	4.07	3.91	4.27	4.43
17. The Superintendent of the Escambia School District makes decisions that are in the best interest of children and parents of the district.	4.01	3.91	4.22	4.45

Pleasant Grove Elementary School

	Mean 2011	Mean 2012	Mean 2013	Mean 2014
Overall Mean	n = 17	3.95	4.49	4.50
1. My child's learning is a high priority at this school.		4.27	4.66	4.62
2. School rules/discipline plans are enforced consistently at this school.		3.81	4.49	4.48
3. I regularly receive feedback from school staff on how well my child is learning.		4.00	4.54	4.27
4. My family is treated with respect at this school.		4.12	4.68	4.66
5. My child has every opportunity to be successful at this school.		3.92	4.44	4.55
6. My child has the necessary classroom supplies and equipment for effective learning.		4.23	4.48	4.65
7. I would recommend this school to other parents.		4.00	4.41	4.59
8. This school provides a safe environment for my child to learn.		4.38	4.48	4.67
9. My child is recognized for good work and behavior at this school.		4.12	4.62	4.58
10. The school is clean and well maintained.		4.04	4.53	4.53
11. The teachers, staff, and administration at this school demonstrate a genuine concern for my child.		3.96	4.65	4.52
12. I am proud to say I have a child at this school.		4.00	4.56	4.60
13. I receive positive phone calls or notes about my child from the school.		3.88	4.42	4.30
14. The principal at this school is approachable and reachable.		3.50	4.35	4.50
15. The principal at this school is an effective leader.		3.50	4.37	4.48
16. The Superintendent of the Escambia School District is an effective leader.		3.76	4.35	4.25
17. The Superintendent of the Escambia School District makes decisions that are in the best interest of children and parents of the district.		3.72	4.28	4.23

R. C. Lipscomb Elementary School

	Mean 2011	Mean 2012	Mean 2013	Mean 2014
Overall Mean	4.69	4.49	4.55	4.52
1. My child's learning is a high priority at this school.	4.77	4.69	4.68	4.64
2. School rules/discipline plans are enforced consistently at this school.	4.54	4.44	4.62	4.52
3. I regularly receive feedback from school staff on how well my child is learning.	4.73	4.50	4.53	4.47
4. My family is treated with respect at this school.	4.85	4.63	4.62	4.60
5. My child has every opportunity to be successful at this school.	4.73	4.56	4.58	4.51
6. My child has the necessary classroom supplies and equipment for effective learning.	4.69	4.31	4.67	4.62
7. I would recommend this school to other parents.	4.81	4.69	4.67	4.58
8. This school provides a safe environment for my child to learn.	4.73	4.75	4.70	4.67
9. My child is recognized for good work and behavior at this school.	4.64	4.50	4.66	4.62
10. The school is clean and well maintained.	4.60	4.38	4.68	4.63
11. The teachers, staff, and administration at this school demonstrate a genuine concern for my child.	4.69	4.56	4.55	4.61
12. I am proud to say I have a child at this school.	4.81	4.69	4.66	4.60
13. I receive positive phone calls or notes about my child from the school.	4.46	4.56	4.39	4.38
14. The principal at this school is approachable and reachable.	4.88	4.53	4.29	4.28
15. The principal at this school is an effective leader.	4.69	4.44	4.38	4.34
16. The Superintendent of the Escambia School District is an effective leader.	4.62	4.13	4.34	4.33
17. The Superintendent of the Escambia School District makes decisions that are in the best interest of children and parents of the district.	4.50	4.06	4.32	4.38

Scenic Heights Elementary School

	Mean 2011	Mean 2012	Mean 2013	Mean 2014
Overall Mean	4.39	4.34	4.19	4.42
1. My child's learning is a high priority at this school.	4.55	4.45	4.36	4.59
2. School rules/discipline plans are enforced consistently at this school.	4.47	4.55	4.09	4.44
3. I regularly receive feedback from school staff on how well my child is learning.	4.38	4.18	4.09	4.34
4. My family is treated with respect at this school.	4.52	4.36	4.55	4.55
5. My child has every opportunity to be successful at this school.	4.50	4.55	4.45	4.49
6. My child has the necessary classroom supplies and equipment for effective learning.	4.50	4.45	4.36	4.55
7. I would recommend this school to other parents.	4.55	4.73	4.45	4.53
8. This school provides a safe environment for my child to learn.	4.56	4.73	4.09	4.52
9. My child is recognized for good work and behavior at this school.	4.52	4.64	4.55	4.48
10. The school is clean and well maintained.	4.48	4.27	4.00	4.50
11. The teachers, staff, and administration at this school demonstrate a genuine concern for my child.	4.42	4.45	4.27	4.45
12. I am proud to say I have a child at this school.	4.55	4.64	4.36	4.51
13. I receive positive phone calls or notes about my child from the school.	4.21	4.27	3.80	4.16
14. The principal at this school is approachable and reachable.	4.27	4.00	3.91	4.30
15. The principal at this school is an effective leader.	4.32	3.91	3.73	4.37
16. The Superintendent of the Escambia School District is an effective leader.	3.94	3.73	4.00	4.22
17. The Superintendent of the Escambia School District makes decisions that are in the best interest of children and parents of the district.	3.88	3.82	4.09	4.18

Sherwood Elementary School

	Mean 2011	Mean 2012	Mean 2013	Mean 2014
Overall Mean	4.42	4.34	4.46	4.42
1. My child's learning is a high priority at this school.	4.65	4.50	4.58	4.50
2. School rules/discipline plans are enforced consistently at this school.	4.51	4.37	4.44	4.48
3. I regularly receive feedback from school staff on how well my child is learning.	4.51	4.37	4.36	4.31
4. My family is treated with respect at this school.	4.62	4.47	4.53	4.53
5. My child has every opportunity to be successful at this school.	4.56	4.42	4.45	4.45
6. My child has the necessary classroom supplies and equipment for effective learning.	4.60	4.41	4.48	4.45
7. I would recommend this school to other parents.	4.45	4.42	4.48	4.44
8. This school provides a safe environment for my child to learn.	4.56	4.48	4.51	4.57
9. My child is recognized for good work and behavior at this school.	4.51	4.43	4.54	4.54
10. The school is clean and well maintained.	4.52	4.35	4.52	4.41
11. The teachers, staff, and administration at this school demonstrate a genuine concern for my child.	4.49	4.40	4.49	4.49
12. I am proud to say I have a child at this school.	4.42	4.43	4.47	4.42
13. I receive positive phone calls or notes about my child from the school.	4.33	4.19	4.34	4.25
14. The principal at this school is approachable and reachable.	4.23	4.34	4.48	4.44
15. The principal at this school is an effective leader.	4.22	4.35	4.54	4.45
16. The Superintendent of the Escambia School District is an effective leader.	3.97	3.93	4.32	4.21
17. The Superintendent of the Escambia School District makes decisions that are in the best interest of children and parents of the district.	3.93	3.91	4.28	4.23

Warrington Elementary School

	Mean 2011	Mean 2012	Mean 2013	Mean 2014
Overall Mean	2.87	4.13	4.15	4.58
1. My child's learning is a high priority at this school.	3.20	4.23	4.18	4.50
2. School rules/discipline plans are enforced consistently at this school.	2.80	4.03	4.11	4.50
3. I regularly receive feedback from school staff on how well my child is learning.	3.20	4.26	4.14	4.46
4. My family is treated with respect at this school.	2.60	4.15	4.20	4.57
5. My child has every opportunity to be successful at this school.	2.80	4.08	4.13	4.64
6. My child has the necessary classroom supplies and equipment for effective learning.	2.40	4.32	4.21	4.71
7. I would recommend this school to other parents.	2.60	3.96	4.07	4.52
8. This school provides a safe environment for my child to learn.	2.80	4.20	4.18	4.62
9. My child is recognized for good work and behavior at this school.	3.40	4.22	4.16	4.71
10. The school is clean and well maintained.	2.80	4.27	4.45	4.68
11. The teachers, staff, and administration at this school demonstrate a genuine concern for my child.	2.60	4.14	4.16	4.68
12. I am proud to say I have a child at this school.	3.00	4.06	4.02	4.55
13. I receive positive phone calls or notes about my child from the school.	3.20	4.10	4.02	4.65
14. The principal at this school is approachable and reachable.	2.80	4.07	4.04	4.51
15. The principal at this school is an effective leader.	2.60	4.12	4.05	4.58
16. The Superintendent of the Escambia School District is an effective leader.	3.20	4.04	4.25	4.63
17. The Superintendent of the Escambia School District makes decisions that are in the best interest of children and parents of the district.	2.80	3.99	4.15	4.63

West Pensacola Elementary School

	Mean 2011	Mean 2012	Mean 2013	Mean 2014
Overall Mean	4.32	4.35	4.39	4.33
1. My child's learning is a high priority at this school.	4.50	4.32	4.51	4.38
2. School rules/discipline plans are enforced consistently at this school.	4.50	4.47	4.34	4.34
3. I regularly receive feedback from school staff on how well my child is learning.	4.17	4.26	4.48	4.28
4. My family is treated with respect at this school.	4.50	4.53	4.48	4.43
5. My child has every opportunity to be successful at this school.	4.50	4.47	4.45	4.34
6. My child has the necessary classroom supplies and equipment for effective learning.	4.67	4.58	4.53	4.36
7. I would recommend this school to other parents.	4.17	4.21	4.25	4.17
8. This school provides a safe environment for my child to learn.	4.67	4.42	4.43	4.44
9. My child is recognized for good work and behavior at this school.	4.50	4.32	4.54	4.45
10. The school is clean and well maintained.	4.17	4.53	4.43	4.45
11. The teachers, staff, and administration at this school demonstrate a genuine concern for my child.	4.33	4.58	4.43	4.43
12. I am proud to say I have a child at this school.	4.33	4.21	4.32	4.25
13. I receive positive phone calls or notes about my child from the school.	4.33	4.21	4.34	4.30
14. The principal at this school is approachable and reachable.	4.17	4.37	4.19	4.28
15. The principal at this school is an effective leader.	4.00	4.37	4.30	4.32
16. The Superintendent of the Escambia School District is an effective leader.	4.00	4.11	4.28	4.24
17. The Superintendent of the Escambia School District makes decisions that are in the best interest of children and parents of the district.	4.00	4.00	4.31	4.21

Bellview Middle School

	Mean 2011	Mean 2012	Mean 2013	Mean 2014
Overall Mean	n = 14	n = 5	4.05	2.84
1. My child's learning is a high priority at this school.			4.30	3.64
2. School rules/discipline plans are enforced consistently at this school.			4.21	2.55
3. I regularly receive feedback from school staff on how well my child is learning.			3.71	2.55
4. My family is treated with respect at this school.			4.26	3.00
5. My child has every opportunity to be successful at this school.			4.25	3.09
6. My child has the necessary classroom supplies and equipment for effective learning.			4.26	3.45
7. I would recommend this school to other parents.			3.93	2.45
8. This school provides a safe environment for my child to learn.			4.09	2.82
9. My child is recognized for good work and behavior at this school.			4.09	3.18
10. The school is clean and well maintained.			4.09	3.18
11. The teachers, staff, and administration at this school demonstrate a genuine concern for my child.			4.18	2.90
12. I am proud to say I have a child at this school.			4.07	2.64
13. I receive positive phone calls or notes about my child from the school.			3.49	2.82
14. The principal at this school is approachable and reachable.			3.99	2.64
15. The principal at this school is an effective leader.			3.98	2.60
16. The Superintendent of the Escambia School District is an effective leader.			4.01	2.45
17. The Superintendent of the Escambia School District makes decisions that are in the best interest of children and parents of the district.			3.95	2.36

Brown Barge Middle School

	Mean 2011	Mean 2012	Mean 2013	Mean 2014
Overall Mean	3.98	3.63	4.49	4.39
1. My child's learning is a high priority at this school.	4.38	3.67	4.71	4.68
2. School rules/discipline plans are enforced consistently at this school.	4.15	3.92	4.65	4.49
3. I regularly receive feedback from school staff on how well my child is learning.	3.38	2.67	4.35	4.19
4. My family is treated with respect at this school.	4.10	4.08	4.57	4.68
5. My child has every opportunity to be successful at this school.	4.19	3.83	4.67	4.51
6. My child has the necessary classroom supplies and equipment for effective learning.	4.24	4.08	4.31	4.37
7. I would recommend this school to other parents.	4.10	3.92	4.67	4.62
8. This school provides a safe environment for my child to learn.	4.33	4.25	4.49	4.54
9. My child is recognized for good work and behavior at this school.	3.71	3.17	4.55	4.29
10. The school is clean and well maintained.	4.00	4.00	4.50	4.25
11. The teachers, staff, and administration at this school demonstrate a genuine concern for my child.	4.05	3.67	4.53	4.55
12. I am proud to say I have a child at this school.	4.29	4.00	4.69	4.66
13. I receive positive phone calls or notes about my child from the school.	2.70	2.75	4.00	3.96
14. The principal at this school is approachable and reachable.	4.24	3.42	4.55	4.37
15. The principal at this school is an effective leader.	4.24	3.42	4.47	4.29
16. The Superintendent of the Escambia School District is an effective leader.	3.76	3.50	4.33	4.09
17. The Superintendent of the Escambia School District makes decisions that are in the best interest of children and parents of the district.	3.81	3.42	4.33	4.07

Ernest Ward Middle School

	Mean 2011	Mean 2012	Mean 2013	Mean 2014
Overall Mean	Missing	n = 3	4.08	4.10
1. My child's learning is a high priority at this school.			4.22	4.37
2. School rules/discipline plans are enforced consistently at this school.			4.22	4.19
3. I regularly receive feedback from school staff on how well my child is learning.			3.65	3.44
4. My family is treated with respect at this school.			4.25	4.42
5. My child has every opportunity to be successful at this school.			4.19	4.23
6. My child has the necessary classroom supplies and equipment for effective learning.			4.28	4.13
7. I would recommend this school to other parents.			4.10	4.25
8. This school provides a safe environment for my child to learn.			4.28	4.42
9. My child is recognized for good work and behavior at this school.			4.12	4.06
10. The school is clean and well maintained.			3.93	3.92
11. The teachers, staff, and administration at this school demonstrate a genuine concern for my child.			3.94	4.19
12. I am proud to say I have a child at this school.			4.11	4.23
13. I receive positive phone calls or notes about my child from the school.			3.62	3.23
14. The principal at this school is approachable and reachable.			4.22	4.29
15. The principal at this school is an effective leader.			4.30	4.31
16. The Superintendent of the Escambia School District is an effective leader.			4.04	4.00
17. The Superintendent of the Escambia School District makes decisions that are in the best interest of children and parents of the district.			4.00	4.04

Ferry Pass Middle School

	Mean 2011	Mean 2012	Mean 2013	Mean 2014
Overall Mean	3.93	4.01	4.14	4.07
1. My child's learning is a high priority at this school.	4.24	4.23	4.30	4.29
2. School rules/discipline plans are enforced consistently at this school.	4.09	4.05	4.20	4.13
3. I regularly receive feedback from school staff on how well my child is learning.	3.45	3.47	3.66	3.59
4. My family is treated with respect at this school.	4.08	4.16	4.34	4.21
5. My child has every opportunity to be successful at this school.	4.10	4.22	4.30	4.23
6. My child has the necessary classroom supplies and equipment for effective learning.	4.17	4.18	4.32	4.24
7. I would recommend this school to other parents.	4.03	4.11	4.24	4.11
8. This school provides a safe environment for my child to learn.	4.06	4.14	4.24	4.16
9. My child is recognized for good work and behavior at this school.	3.93	4.02	4.11	4.04
10. The school is clean and well maintained.	4.04	4.01	4.20	4.10
11. The teachers, staff, and administration at this school demonstrate a genuine concern for my child.	3.92	3.95	4.12	4.08
12. I am proud to say I have a child at this school.	3.96	4.12	4.22	4.10
13. I receive positive phone calls or notes about my child from the school.	3.35	3.64	3.70	3.58
14. The principal at this school is approachable and reachable.	4.02	4.12	4.20	4.12
15. The principal at this school is an effective leader.	4.10	4.15	4.29	4.20
16. The Superintendent of the Escambia School District is an effective leader.	3.66	3.80	4.03	3.98
17. The Superintendent of the Escambia School District makes decisions that are in the best interest of children and parents of the district.	3.57	3.76	4.00	4.00

James C. Bailey Middle School

	Mean 2011	Mean 2012	Mean 2013	Mean 2014
Overall Mean	4.01	3.76	4.20	3.76
1. My child's learning is a high priority at this school.	4.36	3.85	4.45	3.99
2. School rules/discipline plans are enforced consistently at this school.	4.15	3.88	4.26	3.85
3. I regularly receive feedback from school staff on how well my child is learning.	3.59	3.24	3.67	3.11
4. My family is treated with respect at this school.	4.11	4.00	4.31	4.13
5. My child has every opportunity to be successful at this school.	4.13	3.95	4.33	3.89
6. My child has the necessary classroom supplies and equipment for effective learning.	4.22	4.05	4.35	4.14
7. I would recommend this school to other parents.	4.21	4.02	4.39	3.89
8. This school provides a safe environment for my child to learn.	4.24	3.85	4.36	3.88
9. My child is recognized for good work and behavior at this school.	4.01	3.59	4.20	3.81
10. The school is clean and well maintained.	4.25	4.27	4.42	4.21
11. The teachers, staff, and administration at this school demonstrate a genuine concern for my child.	3.96	3.71	4.16	3.65
12. I am proud to say I have a child at this school.	4.12	3.90	4.30	3.79
13. I receive positive phone calls or notes about my child from the school.	3.49	2.75	3.61	2.94
14. The principal at this school is approachable and reachable.	3.84	3.63	4.10	3.61
15. The principal at this school is an effective leader.	3.99	3.73	4.24	3.75
16. The Superintendent of the Escambia School District is an effective leader.	3.72	3.74	4.17	3.66
17. The Superintendent of the Escambia School District makes decisions that are in the best interest of children and parents of the district.	3.70	3.65	4.13	3.65

Ransom Middle School

	Mean 2011	Mean 2012	Mean 2013	Mean 2014
Overall Mean	4.11	4.15	4.35	3.96
1. My child's learning is a high priority at this school.	4.39	4.43	4.54	4.20
2. School rules/discipline plans are enforced consistently at this school.	4.15	4.02	4.46	3.98
3. I regularly receive feedback from school staff on how well my child is learning.	3.37	3.25	3.54	3.01
4. My family is treated with respect at this school.	4.23	4.43	4.62	4.15
5. My child has every opportunity to be successful at this school.	4.23	4.35	4.54	4.09
6. My child has the necessary classroom supplies and equipment for effective learning.	4.23	4.33	4.62	4.17
7. I would recommend this school to other parents.	4.28	4.41	4.46	4.20
8. This school provides a safe environment for my child to learn.	4.44	4.49	4.38	4.27
9. My child is recognized for good work and behavior at this school.	3.92	4.02	4.23	3.92
10. The school is clean and well maintained.	4.54	4.49	4.46	4.30
11. The teachers, staff, and administration at this school demonstrate a genuine concern for my child.	4.23	4.18	4.46	3.82
12. I am proud to say I have a child at this school.	4.32	4.39	4.46	4.20
13. I receive positive phone calls or notes about my child from the school.	3.04	2.96	3.31	2.89
14. The principal at this school is approachable and reachable.	4.46	4.51	4.69	4.03
15. The principal at this school is an effective leader.	4.32	4.49	4.75	4.07
16. The Superintendent of the Escambia School District is an effective leader.	3.89	3.90	4.31	4.05
17. The Superintendent of the Escambia School District makes decisions that are in the best interest of children and parents of the district.	3.85	3.86	4.23	4.00

Warrington Middle School

	Mean 2011	Mean 2012	Mean 2013	Mean 2014
Overall Mean	4.15	4.17	4.31	4.31
1. My child's learning is a high priority at this school.	4.00	4.25	4.44	4.40
2. School rules/discipline plans are enforced consistently at this school.	4.00	4.32	4.41	4.35
3. I regularly receive feedback from school staff on how well my child is learning.	3.96	3.91	3.91	4.10
4. My family is treated with respect at this school.	4.44	4.35	4.51	4.54
5. My child has every opportunity to be successful at this school.	4.22	4.28	4.53	4.42
6. My child has the necessary classroom supplies and equipment for effective learning.	4.41	4.39	4.36	4.38
7. I would recommend this school to other parents.	3.96	4.12	4.26	4.23
8. This school provides a safe environment for my child to learn.	4.07	4.13	4.36	4.17
9. My child is recognized for good work and behavior at this school.	4.11	4.12	4.39	4.15
10. The school is clean and well maintained.	4.44	4.35	4.34	4.46
11. The teachers, staff, and administration at this school demonstrate a genuine concern for my child.	4.19	4.23	4.37	4.49
12. I am proud to say I have a child at this school.	4.04	4.12	4.25	4.23
13. I receive positive phone calls or notes about my child from the school.	3.93	3.71	4.08	3.96
14. The principal at this school is approachable and reachable.	4.33	4.24	4.38	4.46
15. The principal at this school is an effective leader.	4.37	4.24	4.39	4.55
16. The Superintendent of the Escambia School District is an effective leader.	4.07	4.06	4.21	4.21
17. The Superintendent of the Escambia School District makes decisions that are in the best interest of children and parents of the district.	4.07	4.06	4.14	4.20

Woodham Middle School

	Mean 2011	Mean 2012	Mean 2013	Mean 2014
Overall Mean	4.21	3.92	4.11	3.73
1. My child's learning is a high priority at this school.	4.33	4.11	4.09	3.89
2. School rules/discipline plans are enforced consistently at this school.	4.17	4.09	4.15	3.89
3. I regularly receive feedback from school staff on how well my child is learning.	4.33	3.66	3.95	3.33
4. My family is treated with respect at this school.	4.42	4.20	4.40	4.44
5. My child has every opportunity to be successful at this school.	4.50	4.06	4.12	3.67
6. My child has the necessary classroom supplies and equipment for effective learning.	4.17	4.11	4.35	4.22
7. I would recommend this school to other parents.	4.17	3.77	3.98	3.00
8. This school provides a safe environment for my child to learn.	3.92	4.00	4.05	3.67
9. My child is recognized for good work and behavior at this school.	4.58	4.00	4.19	4.00
10. The school is clean and well maintained.	3.75	3.91	4.28	3.89
11. The teachers, staff, and administration at this school demonstrate a genuine concern for my child.	4.18	4.09	4.19	3.89
12. I am proud to say I have a child at this school.	4.17	3.83	4.05	3.56
13. I receive positive phone calls or notes about my child from the school.	4.25	3.57	3.81	3.11
14. The principal at this school is approachable and reachable.	4.42	3.76	4.10	4.00
15. The principal at this school is an effective leader.	4.00	3.85	4.17	3.78
16. The Superintendent of the Escambia School District is an effective leader.	4.08	3.82	4.07	3.67
17. The Superintendent of the Escambia School District makes decisions that are in the best interest of children and parents of the district.	4.17	3.85	4.02	3.44

Workman Middle School

	Mean 2011	Mean 2012	Mean 2013	Mean 2014
Overall Mean	3.63	3.25	3.26	3.23
1. My child's learning is a high priority at this school.	3.93	3.63	3.76	3.57
2. School rules/discipline plans are enforced consistently at this school.	3.53	3.03	2.98	3.11
3. I regularly receive feedback from school staff on how well my child is learning.	3.10	2.97	2.59	2.46
4. My family is treated with respect at this school.	3.97	3.52	3.61	3.61
5. My child has every opportunity to be successful at this school.	3.83	3.58	3.52	3.36
6. My child has the necessary classroom supplies and equipment for effective learning.	4.03	3.42	3.66	3.43
7. I would recommend this school to other parents.	3.80	3.16	3.09	3.05
8. This school provides a safe environment for my child to learn.	3.61	3.32	3.30	3.08
9. My child is recognized for good work and behavior at this school.	3.63	3.55	3.20	3.37
10. The school is clean and well maintained.	3.70	3.43	3.43	3.10
11. The teachers, staff, and administration at this school demonstrate a genuine concern for my child.	3.72	3.45	3.14	3.44
12. I am proud to say I have a child at this school.	3.63	3.39	3.05	2.98
13. I receive positive phone calls or notes about my child from the school.	3.07	2.80	2.55	2.53
14. The principal at this school is approachable and reachable.	3.62	2.70	2.89	3.56
15. The principal at this school is an effective leader.	3.34	2.57	2.82	3.39
16. The Superintendent of the Escambia School District is an effective leader.	3.62	3.40	3.55	3.45
17. The Superintendent of the Escambia School District makes decisions that are in the best interest of children and parents of the district.	3.52	3.30	3.57	3.43

Booker T. Washington High School

	Mean 2011	Mean 2012	Mean 2013	Mean 2014
Overall Mean	3.93	3.68	3.69	3.38
1. My child's learning is a high priority at this school.	4.32	3.88	4.06	3.52
2. School rules/discipline plans are enforced consistently at this school.	4.06	4.00	3.84	3.41
3. I regularly receive feedback from school staff on how well my child is learning.	3.29	3.00	3.05	2.41
4. My family is treated with respect at this school.	4.18	4.00	3.79	3.79
5. My child has every opportunity to be successful at this school.	4.26	3.43	3.99	3.59
6. My child has the necessary classroom supplies and equipment for effective learning.	4.08	4.29	3.92	3.52
7. I would recommend this school to other parents.	4.14	3.71	3.78	3.48
8. This school provides a safe environment for my child to learn.	4.09	4.29	3.71	3.72
9. My child is recognized for good work and behavior at this school.	3.87	4.00	3.51	3.10
10. The school is clean and well maintained.	4.01	3.86	3.16	3.59
11. The teachers, staff, and administration at this school demonstrate a genuine concern for my child.	4.01	3.14	3.60	3.43
12. I am proud to say I have a child at this school.	4.20	3.71	3.82	3.57
13. I receive positive phone calls or notes about my child from the school.	3.06	2.86	3.12	2.50
14. The principal at this school is approachable and reachable.	3.82	3.43	4.01	3.29
15. The principal at this school is an effective leader.	3.99	3.29	4.11	3.32
16. The Superintendent of the Escambia School District is an effective leader.	3.72	4.00	3.73	3.43
17. The Superintendent of the Escambia School District makes decisions that are in the best interest of children and parents of the district.	3.67	3.71	3.58	3.46

Escambia High School

	Mean 2011	Mean 2012	Mean 2013	Mean 2014
Overall Mean	3.67	3.35	3.57	3.10
1. My child's learning is a high priority at this school.	3.62	3.75	3.67	3.41
2. School rules/discipline plans are enforced consistently at this school.	3.92	3.67	3.72	3.44
3. I regularly receive feedback from school staff on how well my child is learning.	3.00	2.50	2.78	2.33
4. My family is treated with respect at this school.	4.08	3.83	3.83	3.22
5. My child has every opportunity to be successful at this school.	3.92	3.58	3.89	3.16
6. My child has the necessary classroom supplies and equipment for effective learning.	3.92	3.50	3.56	3.41
7. I would recommend this school to other parents.	3.67	3.50	3.56	3.04
8. This school provides a safe environment for my child to learn.	3.67	3.25	3.61	3.67
9. My child is recognized for good work and behavior at this school.	3.67	3.42	3.44	3.19
10. The school is clean and well maintained.	3.50	3.25	3.39	3.08
11. The teachers, staff, and administration at this school demonstrate a genuine concern for my child.	3.75	3.17	3.33	3.04
12. I am proud to say I have a child at this school.	3.67	3.50	3.50	3.04
13. I receive positive phone calls or notes about my child from the school.	2.67	2.33	2.56	2.07
14. The principal at this school is approachable and reachable.	3.92	3.17	3.61	2.93
15. The principal at this school is an effective leader.	4.00	3.33	3.83	3.15
16. The Superintendent of the Escambia School District is an effective leader.	3.75	3.58	3.61	3.23
17. The Superintendent of the Escambia School District makes decisions that are in the best interest of children and parents of the district.	3.75	3.58	3.56	3.33

J.M. Tate High School

	Mean 2011	Mean 2012	Mean 2013	Mean 2014
Overall Mean	3.84	3.52	4.09	3.80
1. My child's learning is a high priority at this school.	4.12	3.71	4.29	4.22
2. School rules/discipline plans are enforced consistently at this school.	4.00	3.52	4.15	3.84
3. I regularly receive feedback from school staff on how well my child is learning.	3.34	2.81	3.44	2.94
4. My family is treated with respect at this school.	4.02	4.00	4.29	4.04
5. My child has every opportunity to be successful at this school.	4.03	3.76	4.31	4.08
6. My child has the necessary classroom supplies and equipment for effective learning.	4.02	3.81	4.21	4.07
7. I would recommend this school to other parents.	4.03	3.71	4.27	3.98
8. This school provides a safe environment for my child to learn.	4.10	4.00	4.31	4.10
9. My child is recognized for good work and behavior at this school.	3.76	3.00	4.00	3.69
10. The school is clean and well maintained.	3.93	3.67	4.07	3.79
11. The teachers, staff, and administration at this school demonstrate a genuine concern for my child.	3.93	3.48	4.10	3.89
12. I am proud to say I have a child at this school.	3.98	3.71	4.26	3.93
13. I receive positive phone calls or notes about my child from the school.	2.90	2.52	3.37	2.72
14. The principal at this school is approachable and reachable.	3.88	3.52	4.22	3.82
15. The principal at this school is an effective leader.	4.00	3.62	4.15	3.63
16. The Superintendent of the Escambia School District is an effective leader.	3.71	3.57	4.17	4.00
17. The Superintendent of the Escambia School District makes decisions that are in the best interest of children and parents of the district.	3.61	3.48	4.07	3.92

Northview High School

	Mean 2011	Mean 2012	Mean 2013	Mean 2014
Overall Mean	Missing	n = 7	4.06	3.78
1. My child's learning is a high priority at this school.			4.29	3.88
2. School rules/discipline plans are enforced consistently at this school.			4.24	3.82
3. I regularly receive feedback from school staff on how well my child is learning.			3.53	3.10
4. My family is treated with respect at this school.			4.04	3.83
5. My child has every opportunity to be successful at this school.			4.16	3.80
6. My child has the necessary classroom supplies and equipment for effective learning.			4.29	3.83
7. I would recommend this school to other parents.			4.13	3.87
8. This school provides a safe environment for my child to learn.			4.35	4.10
9. My child is recognized for good work and behavior at this school.			3.91	3.82
10. The school is clean and well maintained.			4.41	4.28
11. The teachers, staff, and administration at this school demonstrate a genuine concern for my child.			4.08	3.71
12. I am proud to say I have a child at this school.			4.18	3.88
13. I receive positive phone calls or notes about my child from the school.			3.45	3.07
14. The principal at this school is approachable and reachable.			4.00	3.72
15. The principal at this school is an effective leader.			4.03	3.87
16. The Superintendent of the Escambia School District is an effective leader.			4.04	3.90
17. The Superintendent of the Escambia School District makes decisions that are in the best interest of children and parents of the district.			3.91	3.85

Pensacola High School

	Mean 2011	Mean 2012	Mean 2013	Mean 2014
Overall Mean	3.67	3.12	3.62	3.05
1. My child's learning is a high priority at this school.	4.20	4.10	4.13	3.51
2. School rules/discipline plans are enforced consistently at this school.	3.66	3.10	3.56	3.11
3. I regularly receive feedback from school staff on how well my child is learning.	3.08	2.60	3.16	2.31
4. My family is treated with respect at this school.	3.94	3.00	3.88	3.37
5. My child has every opportunity to be successful at this school.	4.01	3.30	4.13	3.40
6. My child has the necessary classroom supplies and equipment for effective learning.	3.61	2.60	3.92	3.20
7. I would recommend this school to other parents.	3.98	3.40	3.65	3.15
8. This school provides a safe environment for my child to learn.	3.73	2.50	3.41	3.06
9. My child is recognized for good work and behavior at this school.	3.85	3.80	3.70	3.03
10. The school is clean and well maintained.	3.05	2.90	2.86	2.38
11. The teachers, staff, and administration at this school demonstrate a genuine concern for my child.	3.88	3.30	3.61	3.15
12. I am proud to say I have a child at this school.	4.06	3.70	3.83	3.38
13. I receive positive phone calls or notes about my child from the school.	2.73	2.70	3.10	2.24
14. The principal at this school is approachable and reachable.	3.68	3.30	3.53	3.03
15. The principal at this school is an effective leader.	3.79	3.11	3.72	3.03
16. The Superintendent of the Escambia School District is an effective leader.	3.58	3.00	3.54	3.03
17. The Superintendent of the Escambia School District makes decisions that are in the best interest of children and parents of the district.	3.59	2.70	3.51	3.18

Pine Forest High School

	Mean 2011	Mean 2012	Mean 2013	Mean 2014
Overall Mean	3.42	2.79	4.39	4.54
1. My child's learning is a high priority at this school.	3.81	3.00	4.57	4.53
2. School rules/discipline plans are enforced consistently at this school.	3.62	2.63	4.42	4.41
3. I regularly receive feedback from school staff on how well my child is learning.	2.96	2.13	4.07	4.56
4. My family is treated with respect at this school.	3.45	2.75	4.43	4.50
5. My child has every opportunity to be successful at this school.	3.66	3.00	4.52	4.52
6. My child has the necessary classroom supplies and equipment for effective learning.	3.73	3.38	4.51	4.69
7. I would recommend this school to other parents.	3.40	2.63	4.42	4.43
8. This school provides a safe environment for my child to learn.	3.62	3.00	4.46	4.48
9. My child is recognized for good work and behavior at this school.	3.32	2.75	4.38	4.51
10. The school is clean and well maintained.	3.53	2.50	4.44	4.68
11. The teachers, staff, and administration at this school demonstrate a genuine concern for my child.	3.28	2.63	4.34	4.52
12. I am proud to say I have a child at this school.	3.51	2.63	4.46	4.45
13. I receive positive phone calls or notes about my child from the school.	2.89	2.00	4.02	4.58
14. The principal at this school is approachable and reachable.	3.12	2.63	4.43	4.45
15. The principal at this school is an effective leader.	3.31	3.00	4.44	4.44
16. The Superintendent of the Escambia School District is an effective leader.	3.57	3.50	4.40	4.76
17. The Superintendent of the Escambia School District makes decisions that are in the best interest of children and parents of the district.	3.44	3.38	4.38	4.77

West Florida Tech High School

	Mean 2011	Mean 2012	Mean 2013	Mean 2014
Overall Mean	4.03	4.34	4.05	3.93
1. My child's learning is a high priority at this school.	4.39	4.64	4.40	4.30
2. School rules/discipline plans are enforced consistently at this school.	4.26	4.68	4.17	4.17
3. I regularly receive feedback from school staff on how well my child is learning.	3.50	3.64	3.31	3.17
4. My family is treated with respect at this school.	4.15	4.64	4.22	4.08
5. My child has every opportunity to be successful at this school.	4.36	4.64	4.27	4.13
6. My child has the necessary classroom supplies and equipment for effective learning.	4.21	4.44	4.36	4.22
7. I would recommend this school to other parents.	4.41	4.76	4.45	4.27
8. This school provides a safe environment for my child to learn.	4.29	4.60	4.40	4.27
9. My child is recognized for good work and behavior at this school.	3.96	4.38	4.18	3.77
10. The school is clean and well maintained.	4.11	4.32	4.26	4.08
11. The teachers, staff, and administration at this school demonstrate a genuine concern for my child.	4.05	4.48	4.07	3.93
12. I am proud to say I have a child at this school.	4.42	4.76	4.43	4.28
13. I receive positive phone calls or notes about my child from the school.	3.11	3.56	3.27	3.03
14. The principal at this school is approachable and reachable.	3.79	4.16	3.69	3.79
15. The principal at this school is an effective leader.	3.96	4.16	3.75	3.81
16. The Superintendent of the Escambia School District is an effective leader.	3.78	4.08	3.79	3.89
17. The Superintendent of the Escambia School District makes decisions that are in the best interest of children and parents of the district.	3.72	3.88	3.85	3.88

McMillan Center

	Mean 2011	Mean 2012	Mean 2013	Mean 2014
Overall Mean	Missing	n = 2	4.64	4.74
1. My child's learning is a high priority at this school.			4.79	4.75
2. School rules/discipline plans are enforced consistently at this school.			4.62	4.68
3. I regularly receive feedback from school staff on how well my child is learning.			4.55	4.73
4. My family is treated with respect at this school.			4.74	4.83
5. My child has every opportunity to be successful at this school.			4.73	4.78
6. My child has the necessary classroom supplies and equipment for effective learning.			4.66	4.76
7. I would recommend this school to other parents.			4.83	4.85
8. This school provides a safe environment for my child to learn.			4.66	4.85
9. My child is recognized for good work and behavior at this school.			4.60	4.76
10. The school is clean and well maintained.			4.62	4.69
11. The teachers, staff, and administration at this school demonstrate a genuine concern for my child.			4.60	4.74
12. I am proud to say I have a child at this school.			4.71	4.85
13. I receive positive phone calls or notes about my child from the school.			4.63	4.75
14. The principal at this school is approachable and reachable.			4.74	4.78
15. The principal at this school is an effective leader.			4.66	4.80
16. The Superintendent of the Escambia School District is an effective leader.			4.46	4.47
17. The Superintendent of the Escambia School District makes decisions that are in the best interest of children and parents of the district.			4.40	4.49

PATS Center

	Mean 2011	Mean 2012	Mean 2013	Mean 2014
Overall Mean	n = 3	n= 3	4.59	4.56
1. My child's learning is a high priority at this school.			4.93	4.78
2. School rules/discipline plans are enforced consistently at this school.			4.53	4.44
3. I regularly receive feedback from school staff on how well my child is learning.			4.20	4.11
4. My family is treated with respect at this school.			4.79	4.76
5. My child has every opportunity to be successful at this school.			4.87	4.83
6. My child has the necessary classroom supplies and equipment for effective learning.			4.60	4.72
7. I would recommend this school to other parents.			4.87	4.78
8. This school provides a safe environment for my child to learn.			4.73	4.67
9. My child is recognized for good work and behavior at this school.			4.80	4.50
10. The school is clean and well maintained.			4.07	4.39
11. The teachers, staff, and administration at this school demonstrate a genuine concern for my child.			4.80	4.83
12. I am proud to say I have a child at this school.			4.87	4.94
13. I receive positive phone calls or notes about my child from the school.			4.33	4.22
14. The principal at this school is approachable and reachable.			4.62	4.39
15. The principal at this school is an effective leader.			4.54	4.56
16. The Superintendent of the Escambia School District is an effective leader.			4.33	4.28
17. The Superintendent of the Escambia School District makes decisions that are in the best interest of children and parents of the district.			4.23	4.28