



Escambia County School District
Parent Satisfaction Survey Results Report
2015

Executive Summary

The Escambia County School District (ECSD) is committed to creating a great place for students to learn, teachers to teach, staff to work, and for parents to send their children to receive a great education. To build on this commitment the leadership of the school district consistently gathers data on four essential goals and measures: Employee Engagement, Parent Satisfaction, District Support Services, and Student Engagement. The District measures parent satisfaction through the administration of the Parent Satisfaction Survey each year. Baseline data for the parent survey was established in November 2011.

This report focuses on the results of the 2015 survey administration and includes comparison data based on consistent questions from previous administrations. The overall parent satisfaction rating is **4.37** on a scale of 1 to 5. The school district continues to achieve an overall mean score at or above 4.00 as viewed in Figure 1.

Figure 1. Overall Mean Satisfaction by Survey Administration

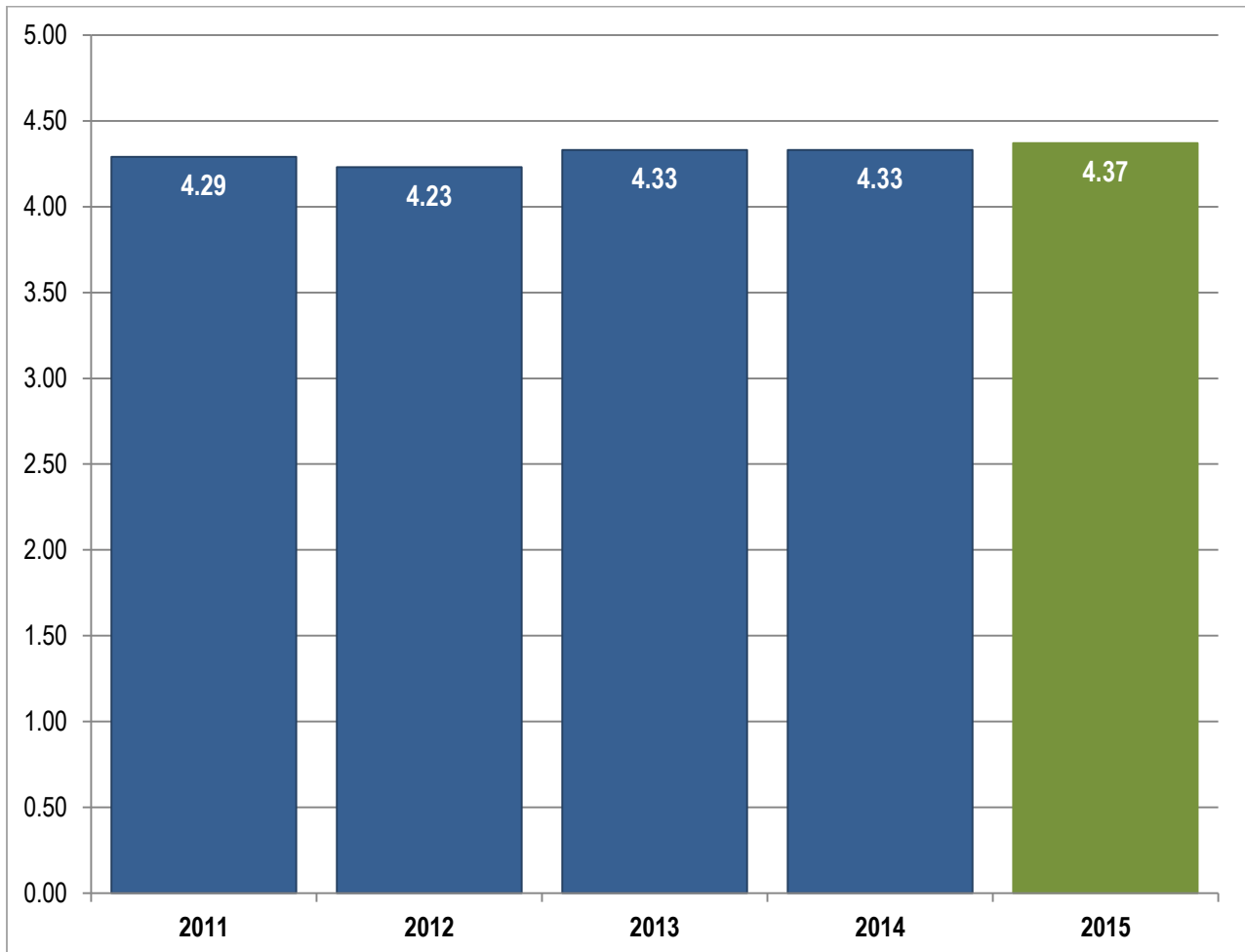
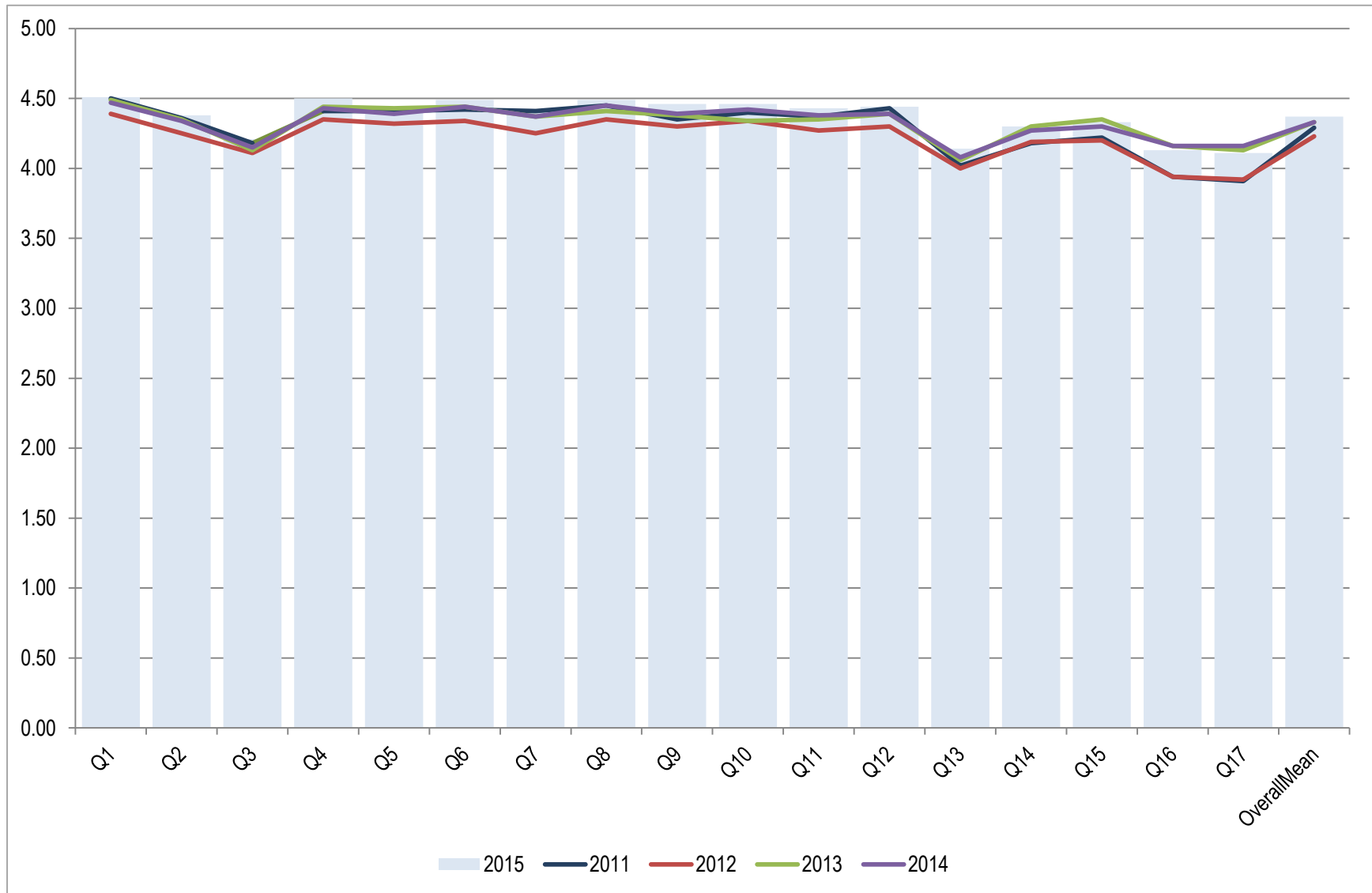


Table 1 (page 2) and Figure 2 (page 3) display the item mean and the overall mean for the most recent survey administrations.

Table 1. Item Mean and Change in Item Mean by Survey Administration

Questions	2011 n = 5,053	2012 n = 2,958	2013 n = 6,704	2014 n = 7,320	2015 n = 4,534
1. My child's learning is a high priority at this school.	4.50	4.39	4.49	4.47	4.51
2. School rules/discipline plans are enforced consistently at this school.	4.36	4.25	4.35	4.34	4.38
3. I regularly receive feedback from school staff on how well my child is learning.	4.18	4.11	4.13	4.15	4.21
4. My family is treated with respect at this school.	4.41	4.35	4.44	4.43	4.50
5. My child has every opportunity to be successful at this school.	4.41	4.32	4.43	4.39	4.44
6. My child has the necessary classroom supplies and equipment for effective learning.	4.42	4.34	4.44	4.44	4.49
7. I would recommend this school to other parents.	4.41	4.25	4.37	4.37	4.42
8. This school provides a safe environment for my child to learn.	4.45	4.35	4.41	4.45	4.49
9. My child is recognized for good work and behavior at this school.	4.35	4.30	4.38	4.39	4.45
10. The school is clean and well maintained.	4.40	4.34	4.34	4.42	4.46
11. The teachers, staff, and administration at this school demonstrate a genuine concern for my child.	4.37	4.27	4.35	4.38	4.43
12. I am proud to say I have a child at this school.	4.43	4.30	4.39	4.39	4.44
13. I receive positive phone calls or notes about my child from the school.	4.02	4.00	4.06	4.08	4.14
14. The principal at this school is approachable and reachable.	4.18	4.19	4.30	4.27	4.30
15. The principal at this school is an effective leader.	4.22	4.20	4.35	4.30	4.33
16. The Superintendent of the school district is an effective leader.	3.94	3.94	4.16	4.16	4.13
17. The Superintendent of the school district makes decisions that are in the best interest of children and parents of the district.	3.91	3.92	4.13	4.16	4.11
Overall Mean Satisfaction	4.29	4.23	4.33	4.33	4.37

Figure 2. Item Mean and Change in Item Mean by Survey Administration



Item Means

The highest item means excluding the Superintendent items are:

- ▼ My child's learning is a priority at this school. {4.51}
- ▼ My family is treated with respect at this school. {4.50}
- ▼ My child has the necessary classroom supplies and equipment for effective learning. {4.49}
- ▼ This school provides a safe environment for my child to learn. {4.49}

The lowest item means excluding the Superintendent items are:

- ▼ I receive positive phone calls or notes about my child from this school. {4.14}
- ▼ I regularly receive feedback from school staff on how well my child is learning. {4.21}
- ▼ The principal is approachable and reachable. {4.30}

Table 2 shows the means for the two items specifically aligned to the Superintendent's leadership.

Table 2. Item Means for Superintendent Items by Survey Administration

Items	2011	2012	2013	2014	2015
16. The Superintendent is an effective leader.	3.94	3.94	4.16	4.16	4.13
17. The Superintendent makes decisions that are in the best interest of children and parents of the district.	3.91	3.92	4.13	4.16	4.11

Parent Responses

Figure 3 displays the percentage of responses by item response category. The “strongly agree” or “agree” categories earned 87.3% of the total responses. This is an increase in responses and represents a positive movement from the “disagree” and “strongly disagree” categories when compared with the previous survey administration. Table 3 shows the number of responses by category across survey administrations.

Figure 3. Percent Responses by Category for 2015 Survey Administration

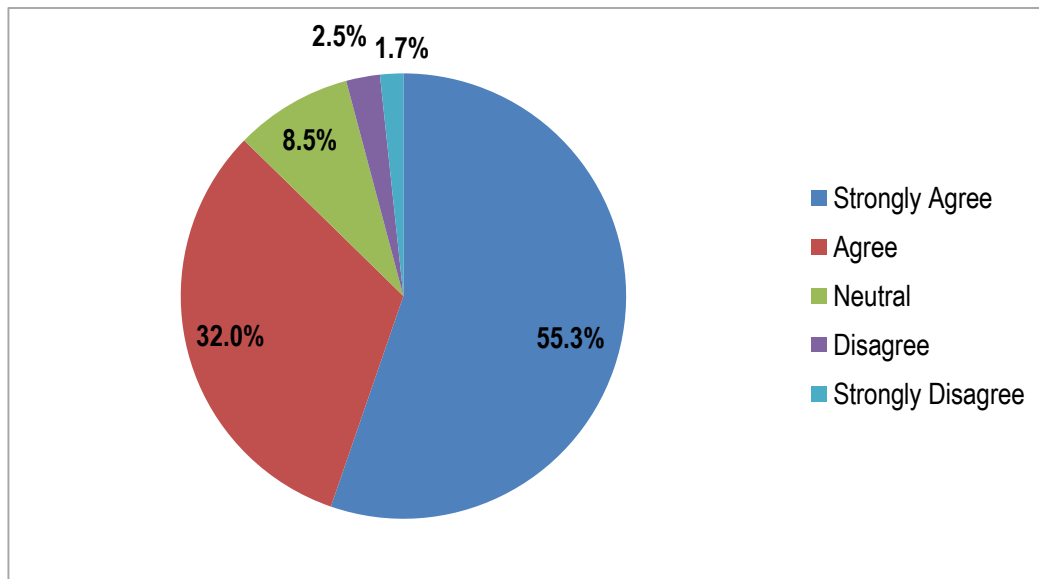


Table 3. Number of Responses by Category and Percent Responses by Survey Administration

	Strongly Agree	Agree	Neutral	Disagree	Strongly Disagree
2012 Number of Responses	22,836	16,734	5,563	1,570	1,112
2012 Percent of Total Responses (n=47,815)	48%	35%	12%	3%	2%
2013 Number of Responses	59,010	36,037	11,191	2,886	1,925
2013 Percent of Total Responses (n=111,049)	53%	32%	10%	3%	2%
2014 Number of Responses	67,169	39,270	10,792	3,139	3,173
2014 Percent of Total Responses (n=123,543)	54%	32%	9%	3%	3%
2015 Number of Responses	43,172	24,098	6,680	1,898	1,310
2015 Percent of Total Responses (n=78,158)	55.2%	32.1%	8.5%	2.4%	1.7%

Note: Percentages may not add to 100 due to rounding.

The number of respondents for each school is provided in the table that follows.

Table 4. Number of Responses by School by Survey Administrations

School	2011	2012	2013	2014	2015
A.K. Suter	13	2	181	111	4
Bellview Elementary	80	4	385	295	258
Bellview Middle	14	5	143	11	4
Beulah	178	22	253	303	174
Blue Angels	330	7	247	237	231
Booker T. Washington	178	13	482	29	15
Bratt	206	86	64	190	143
Brentwood	144	2	113	170	109
Brown Barge	23	14	50	68	52
C.A. Weis	141	118	84	57	38
Camelot	4	0	1	0	1
Cordova Park	73	17	117	105	175
Ensley	66	74	112	116	1
Ernest Ward	31	3	119	52	31
Escambia High	23	14	21	27	17
Escambia Westgate	87	3	0	65	56
Ferry Pass Elementary	155	19	179	188	191
Ferry Pass Middle	164	376	365	332	263
George Stone	0	0	1	1	0
Global Learning Academy	14	325	336	270	142
Hellen Caro	445	40	301	410	235
Holm	5	118	122	82	99
J.M. Tate	49	27	65	97	12
Jim Allen	13	10	216	188	147
Jim C. Bailey	157	42	346	110	29
Judy Andrews	2	0	0	1	12
Lincoln Park	55	107	89	38	38
Longleaf	363	217	142	366	120
McArthur	6	7	52	214	28
McMillan Center	63	2	53	59	42
Molino Park	32	24	9	138	1
Montclair	95	0	41	56	64
Myrtle Grove	18	71	67	207	109
N.B. Cook	38	61	46	99	89
Navy Point	216	170	225	153	2

Table Continued on Next Page

Table 4. Number of Responses by School by Survey Administration*Continued*

School	2011	2012	2013	2014	2015
Northview	34	7	84	60	18
O.J. Semmes	59	1	82	86	95
Oakcrest	186	235	142	248	161
Pats Center	3	3	16	18	0
Pensacola High	102	10	94	35	11
Pine Forest	114	12	89	98	11
Pine Meadow	329	40	260	238	313
Pleasant Grove	17	35	70	159	207
R.C. Lipscomb	33	19	213	220	9
Ransom	65	57	15	108	43
Scenic Heights	330	13	16	400	268
Sherwood	82	191	190	207	113
Warrington Elementary	7	95	56	42	115
Warrington Middle	32	119	78	48	106
West Florida Tech	118	28	88	235	37
West Pensacola	7	20	88	203	60
Woodham Middle	14	39	45	9	2
Workman Middle	40	34	51	61	33

Table 5. Overall Mean by School by Survey Administration

School	Mean 2011	Mean 2012	Mean 2013	Mean 2014	Mean 2015
A.K. Suter	4.56	n = 2	4.62	4.57	n = 4
Bellview Elementary	3.99	n = 4	4.18	4.28	4.31
Bellview Middle	2.42	3.56	4.05	2.84	n = 4
Beulah	4.50	4.02	4.59	4.50	4.50
Blue Angels	4.51	3.63	4.60	4.61	4.62
Booker T. Washington	3.93	3.68	3.69	3.38	3.18
Bratt	4.44	4.33	4.65	4.48	4.51
Brentwood	4.38	n = 2	4.47	4.46	4.54
Brown Barge	3.98	3.63	4.49	4.39	4.02
C.A. Weis	4.37	4.25	4.42	4.34	4.39
Camelot	n = 4	n = 0	n = 1	n = 0	n = 1
Cordova Park	4.49	4.07	4.63	4.56	4.62
Ensley	4.45	4.48	4.67	4.45	n = 1
Ernest Ward	4.24	n = 3	4.08	4.10	3.86
Escambia High	3.67	3.35	3.57	3.10	3.03
Escambia Westgate	4.29	n = 3	n = 0	4.61	4.55

Table Continued on Next Page

Table 5. Overall Mean by School by Survey Administration*Continued*

School	Mean 2011	Mean 2012	Mean 2013	Mean 2014	Mean 2015
Ferry Pass Elementary	4.36	4.33	4.34	4.29	4.47
Ferry Pass Middle	3.93	4.01	4.14	4.07	4.07
George Stone	n = 0	n = 0	n = 1	n = 1	n = 0
Global Learning Academy	4.38	4.39	4.46	4.32	4.35
Hellen Caro	4.52	4.43	4.56	4.47	4.43
Holm	3.35	4.30	4.37	4.38	4.33
J.M. Tate	3.84	3.52	4.09	3.80	3.60
Jim Allen	4.63	4.15	4.65	4.68	4.60
Jim C. Bailey	4.01	3.76	4.20	3.76	3.17
Judy Andrews	n = 2	n = 0	n = 0	n = 1	4.59
Lincoln Park	4.04	4.32	4.36	4.56	4.71
Longleaf	4.34	4.25	4.36	4.30	4.27
McArthur	4.69	4.23	4.55	4.50	4.43
McMillan Center	4.60	n = 2	4.64	4.74	4.78
Molino Park	4.59	4.58	4.72	4.62	n = 1
Montclair	4.07	n = 0	4.16	4.06	4.18
Myrtle Grove	4.29	4.60	4.59	4.44	4.33
N.B. Cook	4.37	4.53	4.65	4.53	4.41
Navy Point	4.37	4.40	4.46	3.24	n = 2
Northview	3.99	3.29	4.06	3.78	3.67
O.J. Semmes	3.93	n = 1	4.18	4.25	4.35
Oakcrest	4.48	4.36	4.44	4.47	4.35
PATS Center	n = 3	n = 3	4.59	4.56	n = 0
Pensacola High	3.67	3.12	3.62	3.05	3.24
Pine Forest	3.42	2.79	4.39	4.54	3.78
Pine Meadow	4.43	4.12	4.44	4.52	4.55
Pleasant Grove	4.55	3.95	4.49	4.50	4.53
R.C. Lipscomb	4.69	4.49	4.55	4.52	3.26
Ransom	4.11	4.15	4.35	3.96	3.81
Scenic Heights	4.39	4.34	4.19	4.42	4.48
Sherwood	4.42	4.34	4.46	4.42	4.57
Warrington Elementary	2.87	4.13	4.15	4.58	4.39
Warrington Middle	4.15	4.17	4.31	4.31	3.76
West Florida Tech	4.03	4.34	4.05	3.93	3.88
West Pensacola	4.32	4.35	4.39	4.33	4.35
Woodham Middle	4.21	3.92	3.26	3.73	n = 2
Workman Middle	3.63	3.25	4.11	3.23	3.51

The Appendix provides the mean scores for each school and special center by survey administration.

APPENDIX

School Results

Note: Schools with fewer than 20 respondents were not included in 2011-2012 survey administrations; schools with fewer than 10 respondents not included in 2013-2015 survey administrations.

A.K. Suter Elementary School

	Mean 2011	Mean 2012	Mean 2013	Mean 2014	Mean 2015
Overall Mean	n = 13	n = 2	4.62	4.57	n = 4
1. My child's learning is a high priority at this school.			4.80	4.67	
2. School rules/discipline plans are enforced consistently at this school.			4.61	4.59	
3. I regularly receive feedback from school staff on how well my child is learning.			4.51	4.42	
4. My family is treated with respect at this school.			4.72	4.71	
5. My child has every opportunity to be successful at this school.			4.65	4.60	
6. My child has the necessary classroom supplies and equipment for effective learning.			4.61	4.63	
7. I would recommend this school to other parents.			4.72	4.80	
8. This school provides a safe environment for my child to learn.			4.77	4.70	
9. My child is recognized for good work and behavior at this school.			4.66	4.67	
10. The school is clean and well maintained.			4.62	4.60	
11. The teachers, staff, and administration at this school demonstrate a genuine concern for my child.			4.65	4.61	
12. I am proud to say I have a child at this school.			4.76	4.74	
13. I receive positive phone calls or notes about my child from the school.			4.49	4.39	
14. The principal at this school is approachable and reachable.			4.73	4.77	
15. The principal at this school is an effective leader.			4.75	4.70	
16. The Superintendent of the Escambia School District is an effective leader.			4.26	4.02	
17. The Superintendent of the Escambia School District makes decisions that are in the best interest of children and parents of the district.			4.22	4.00	

Bellview Elementary School

	Mean 2011	Mean 2012	Mean 2013	Mean 2014	Mean 2015
Overall Mean	Missing	n = 4	4.18	4.28	4.31
1. My child's learning is a high priority at this school.			4.38	4.45	4.42
2. School rules/discipline plans are enforced consistently at this school.			4.26	4.30	4.27
3. I regularly receive feedback from school staff on how well my child is learning.			4.01	4.26	4.30
4. My family is treated with respect at this school.			4.37	4.38	4.50
5. My child has every opportunity to be successful at this school.			4.30	4.31	4.37
6. My child has the necessary classroom supplies and equipment for effective learning.			4.40	4.46	4.45
7. I would recommend this school to other parents.			4.10	4.25	4.30
8. This school provides a safe environment for my child to learn.			4.20	4.33	4.36
9. My child is recognized for good work and behavior at this school.			4.33	4.42	4.46
10. The school is clean and well maintained.			4.21	4.31	4.34
11. The teachers, staff, and administration at this school demonstrate a genuine concern for my child.			4.21	4.33	4.38
12. I am proud to say I have a child at this school.			4.14	4.29	4.33
13. I receive positive phone calls or notes about my child from the school.			3.87	4.21	4.16
14. The principal at this school is approachable and reachable.			4.08	4.13	4.15
15. The principal at this school is an effective leader.			4.18	4.19	4.24
16. The Superintendent of the Escambia School District is an effective leader.			4.04	4.08	4.08
17. The Superintendent of the Escambia School District makes decisions that are in the best interest of children and parents of the district.			4.05	4.07	4.09

Beulah Elementary School

	Mean 2011	Mean 2012	Mean 2013	Mean 2014	Mean 2015
Overall Mean	n = 14	n = 5	4.59	4.50	4.50
1. My child's learning is a high priority at this school.			4.69	4.61	4.63
2. School rules/discipline plans are enforced consistently at this school.			4.57	4.50	4.41
3. I regularly receive feedback from school staff on how well my child is learning.			4.53	4.44	4.46
4. My family is treated with respect at this school.			4.68	4.62	4.61
5. My child has every opportunity to be successful at this school.			4.62	4.51	4.55
6. My child has the necessary classroom supplies and equipment for effective learning.			4.67	4.62	4.61
7. I would recommend this school to other parents.			4.75	4.63	4.64
8. This school provides a safe environment for my child to learn.			4.71	4.62	4.69
9. My child is recognized for good work and behavior at this school.			4.63	4.55	4.56
10. The school is clean and well maintained.			4.64	4.58	4.60
11. The teachers, staff, and administration at this school demonstrate a genuine concern for my child.			4.59	4.55	4.64
12. I am proud to say I have a child at this school.			4.70	4.60	4.56
13. I receive positive phone calls or notes about my child from the school.			4.47	4.35	4.32
14. The principal at this school is approachable and reachable.			4.55	4.30	4.33
15. The principal at this school is an effective leader.			4.56	4.33	4.41
16. The Superintendent of the Escambia School District is an effective leader.			4.32	4.34	4.28
17. The Superintendent of the Escambia School District makes decisions that are in the best interest of children and parents of the district.			4.32	4.34	4.23

Blue Angels Elementary School

	Mean 2011	Mean 2012	Mean 2013	Mean 2014	Mean 2015
Overall Mean	Missing	n = 7	4.60	4.61	4.62
1. My child's learning is a high priority at this school.			4.70	4.68	4.77
2. School rules/discipline plans are enforced consistently at this school.			4.61	4.68	4.67
3. I regularly receive feedback from school staff on how well my child is learning.			4.52	4.45	4.44
4. My family is treated with respect at this school.			4.68	4.68	4.73
5. My child has every opportunity to be successful at this school.			4.64	4.61	4.69
6. My child has the necessary classroom supplies and equipment for effective learning.			4.70	4.66	4.71
7. I would recommend this school to other parents.			4.72	4.73	4.76
8. This school provides a safe environment for my child to learn.			4.74	4.78	4.76
9. My child is recognized for good work and behavior at this school.			4.67	4.64	4.61
10. The school is clean and well maintained.			4.72	4.78	4.76
11. The teachers, staff, and administration at this school demonstrate a genuine concern for my child.			4.65	4.65	4.66
12. I am proud to say I have a child at this school.			4.69	4.73	4.74
13. I receive positive phone calls or notes about my child from the school.			4.42	4.39	4.37
14. The principal at this school is approachable and reachable.			4.57	4.57	4.60
15. The principal at this school is an effective leader.			4.63	4.60	4.61
16. The Superintendent of the Escambia School District is an effective leader.			4.36	4.38	4.35
17. The Superintendent of the Escambia School District makes decisions that are in the best interest of children and parents of the district.			4.33	4.34	4.30

Bratt Elementary School

	Mean 2011	Mean 2012	Mean 2013	Mean 2014	Mean 2015
Overall Mean	4.41	4.33	4.65	4.48	4.51
1. My child's learning is a high priority at this school.	4.57	4.56	4.77	4.57	4.61
2. School rules/discipline plans are enforced consistently at this school.	4.43	4.22	4.65	4.49	4.48
3. I regularly receive feedback from school staff on how well my child is learning.	4.39	4.36	4.55	4.33	4.31
4. My family is treated with respect at this school.	4.47	4.42	4.65	4.58	4.60
5. My child has every opportunity to be successful at this school.	4.50	4.45	4.73	4.55	4.58
6. My child has the necessary classroom supplies and equipment for effective learning.	4.46	4.40	4.65	4.60	4.56
7. I would recommend this school to other parents.	4.55	4.47	4.73	4.56	4.61
8. This school provides a safe environment for my child to learn.	4.51	4.53	4.75	4.59	4.62
9. My child is recognized for good work and behavior at this school.	4.44	4.48	4.71	4.58	4.52
10. The school is clean and well maintained.	4.49	4.46	4.68	4.54	4.58
11. The teachers, staff, and administration at this school demonstrate a genuine concern for my child.	4.55	4.45	4.68	4.53	4.55
12. I am proud to say I have a child at this school.	4.60	4.46	4.73	4.57	4.56
13. I receive positive phone calls or notes about my child from the school.	4.26	4.20	4.52	4.33	4.35
14. The principal at this school is approachable and reachable.	4.37	4.25	4.72	4.51	4.51
15. The principal at this school is an effective leader.	4.35	4.14	4.75	4.44	4.50
16. The Superintendent of the Escambia School District is an effective leader.	4.01	3.85	4.39	4.20	4.31
17. The Superintendent of the Escambia School District makes decisions that are in the best interest of children and parents of the district.	4.00	3.82	4.39	4.24	4.31

Brentwood Elementary School

	Mean 2011	Mean 2012	Mean 2013	Mean 2014	Mean 2015
Overall Mean	Missing	n = 2	4.47	4.46	4.54
1. My child's learning is a high priority at this school.			4.62	4.58	4.71
2. School rules/discipline plans are enforced consistently at this school.			4.50	4.49	4.51
3. I regularly receive feedback from school staff on how well my child is learning.			4.49	4.38	4.51
4. My family is treated with respect at this school.			4.50	4.48	4.70
5. My child has every opportunity to be successful at this school.			4.54	4.54	4.64
6. My child has the necessary classroom supplies and equipment for effective learning.			4.59	4.61	4.70
7. I would recommend this school to other parents.			4.52	4.55	4.62
8. This school provides a safe environment for my child to learn.			4.57	4.59	4.60
9. My child is recognized for good work and behavior at this school.			4.59	4.53	4.60
10. The school is clean and well maintained.			4.58	4.49	4.59
11. The teachers, staff, and administration at this school demonstrate a genuine concern for my child.			4.52	4.55	4.67
12. I am proud to say I have a child at this school.			4.57	4.57	4.64
13. I receive positive phone calls or notes about my child from the school.			4.33	4.21	4.39
14. The principal at this school is approachable and reachable.			4.31	4.40	4.38
15. The principal at this school is an effective leader.			4.40	4.50	4.41
16. The Superintendent of the Escambia School District is an effective leader.			4.14	4.23	4.25
17. The Superintendent of the Escambia School District makes decisions that are in the best interest of children and parents of the district.			4.11	4.25	4.23

C.A. Weis Elementary School

	Mean 2011	Mean 2012	Mean 2013	Mean 2014	Mean 2015
Overall Mean	4.37	4.25	4.42	4.34	4.39
1. My child's learning is a high priority at this school.	4.55	4.34	4.42	4.42	4.45
2. School rules/discipline plans are enforced consistently at this school.	4.40	4.32	4.45	4.33	4.45
3. I regularly receive feedback from school staff on how well my child is learning.	4.32	4.32	4.36	4.37	4.39
4. My family is treated with respect at this school.	4.45	4.43	4.45	4.39	4.59
5. My child has every opportunity to be successful at this school.	4.50	4.34	4.43	4.35	4.50
6. My child has the necessary classroom supplies and equipment for effective learning.	4.48	4.36	4.54	4.39	4.58
7. I would recommend this school to other parents.	4.30	4.08	4.31	4.07	4.26
8. This school provides a safe environment for my child to learn.	4.50	4.38	4.52	4.39	4.50
9. My child is recognized for good work and behavior at this school.	4.45	4.38	4.60	4.40	4.55
10. The school is clean and well maintained.	4.50	4.40	4.63	4.54	4.58
11. The teachers, staff, and administration at this school demonstrate a genuine concern for my child.	4.45	4.34	4.45	4.49	4.32
12. I am proud to say I have a child at this school.	4.39	4.26	4.41	4.28	4.26
13. I receive positive phone calls or notes about my child from the school.	4.34	4.14	4.33	4.39	4.45
14. The principal at this school is approachable and reachable.	4.14	4.09	4.37	4.39	4.22
15. The principal at this school is an effective leader.	4.22	4.11	4.41	4.46	4.16
16. The Superintendent of the Escambia School District is an effective leader.	4.08	3.98	4.23	4.05	4.18
17. The Superintendent of the Escambia School District makes decisions that are in the best interest of children and parents of the district.	4.14	4.04	4.29	4.07	4.26

Cordova Park Elementary School

	Mean 2011	Mean 2012	Mean 2013	Mean 2014	Mean 2015
Overall Mean	4.49	4.07	4.63	4.56	4.62
1. My child's learning is a high priority at this school.	4.74	4.33	4.79	4.74	4.77
2. School rules/discipline plans are enforced consistently at this school.	4.59	4.00	4.66	4.62	4.68
3. I regularly receive feedback from school staff on how well my child is learning.	4.40	4.27	4.59	4.50	4.58
4. My family is treated with respect at this school.	4.66	4.27	4.72	4.64	4.72
5. My child has every opportunity to be successful at this school.	4.54	4.00	4.68	4.55	4.66
6. My child has the necessary classroom supplies and equipment for effective learning.	4.67	4.20	4.71	4.64	4.73
7. I would recommend this school to other parents.	4.79	4.33	4.78	4.72	4.79
8. This school provides a safe environment for my child to learn.	4.76	4.33	4.72	4.61	4.77
9. My child is recognized for good work and behavior at this school.	4.59	4.13	4.69	4.52	4.66
10. The school is clean and well maintained.	4.66	4.33	4.66	4.54	4.68
11. The teachers, staff, and administration at this school demonstrate a genuine concern for my child.	4.63	4.00	4.76	4.61	4.75
12. I am proud to say I have a child at this school.	4.74	4.40	4.79	4.75	4.75
13. I receive positive phone calls or notes about my child from the school.	4.16	3.60	4.46	4.50	4.43
14. The principal at this school is approachable and reachable.	4.09	3.80	4.47	4.51	4.51
15. The principal at this school is an effective leader.	4.24	3.87	4.59	4.56	4.57
16. The Superintendent of the Escambia School District is an effective leader.	4.03	3.73	4.32	4.31	4.29
17. The Superintendent of the Escambia School District makes decisions that are in the best interest of children and parents of the district.	4.01	3.60	4.31	4.27	4.26

Ensley Elementary School

	Mean 2011	Mean 2012	Mean 2013	Mean 2014	Mean 2015
Overall Mean	4.45	4.48	4.67	4.45	n = 1
1. My child's learning is a high priority at this school.	4.62	4.67	4.82	4.62	
2. School rules/discipline plans are enforced consistently at this school.	4.49	4.61	4.65	4.48	
3. I regularly receive feedback from school staff on how well my child is learning.	4.51	4.60	4.67	4.39	
4. My family is treated with respect at this school.	4.63	4.58	4.76	4.66	
5. My child has every opportunity to be successful at this school.	4.62	4.56	4.76	4.54	
6. My child has the necessary classroom supplies and equipment for effective learning.	4.62	4.51	4.67	4.57	
7. I would recommend this school to other parents.	4.54	4.48	4.68	4.45	
8. This school provides a safe environment for my child to learn.	4.60	4.44	4.71	4.53	
9. My child is recognized for good work and behavior at this school.	4.54	4.58	4.78	4.59	
10. The school is clean and well maintained.	4.38	4.38	4.67	4.53	
11. The teachers, staff, and administration at this school demonstrate a genuine concern for my child.	4.59	4.53	4.71	4.61	
12. I am proud to say I have a child at this school.	4.55	4.53	4.70	4.47	
13. I receive positive phone calls or notes about my child from the school.	4.32	4.49	4.64	4.35	
14. The principal at this school is approachable and reachable.	4.41	4.59	4.69	4.30	
15. The principal at this school is an effective leader.	4.41	4.58	4.78	4.37	
16. The Superintendent of the Escambia School District is an effective leader.	3.92	4.03	4.36	4.13	
17. The Superintendent of the Escambia School District makes decisions that are in the best interest of children and parents of the district.	3.89	4.03	4.34	4.12	

Ferry Pass Elementary School

	Mean 2011	Mean 2012	Mean 2013	Mean 2014	Mean 2015
Overall Mean	4.36	4.33	4.34	4.29	4.47
1. My child's learning is a high priority at this school.	4.61	4.50	4.51	4.45	4.64
2. School rules/discipline plans are enforced consistently at this school.	4.45	4.00	4.44	4.42	4.49
3. I regularly receive feedback from school staff on how well my child is learning.	4.42	4.56	4.16	4.32	4.37
4. My family is treated with respect at this school.	4.47	4.19	4.46	4.27	4.50
5. My child has every opportunity to be successful at this school.	4.46	4.44	4.44	4.31	4.55
6. My child has the necessary classroom supplies and equipment for effective learning.	4.50	4.56	4.42	4.49	4.56
7. I would recommend this school to other parents.	4.39	4.44	4.36	4.29	4.51
8. This school provides a safe environment for my child to learn.	4.53	4.44	4.49	4.45	4.61
9. My child is recognized for good work and behavior at this school.	4.48	4.50	4.39	4.37	4.60
10. The school is clean and well maintained.	4.39	4.19	4.37	4.45	4.49
11. The teachers, staff, and administration at this school demonstrate a genuine concern for my child.	4.41	4.38	4.33	4.31	4.52
12. I am proud to say I have a child at this school.	4.43	4.38	4.40	4.30	4.53
13. I receive positive phone calls or notes about my child from the school.	4.13	4.50	4.12	4.16	4.32
14. The principal at this school is approachable and reachable.	4.10	4.13	4.25	4.09	4.37
15. The principal at this school is an effective leader.	4.20	4.06	4.26	4.17	4.37
16. The Superintendent of the Escambia School District is an effective leader.	4.03	4.19	4.18	3.99	4.29
17. The Superintendent of the Escambia School District makes decisions that are in the best interest of children and parents of the district.	4.04	4.13	4.16	4.04	4.29

	Mean 2011	Mean 2012	Mean 2013	Mean 2014	Mean 2015
Overall Mean	4.38	4.39	4.46	4.32	4.35
1. My child's learning is a high priority at this school.	4.62	4.56	4.55	4.49	4.41
2. School rules/discipline plans are enforced consistently at this school.	4.46	4.37	4.47	4.38	4.34
3. I regularly receive feedback from school staff on how well my child is learning.	4.46	4.37	4.38	4.30	4.28
4. My family is treated with respect at this school.	4.23	4.44	4.59	4.40	4.43
5. My child has every opportunity to be successful at this school.	4.38	4.47	4.52	4.39	4.43
6. My child has the necessary classroom supplies and equipment for effective learning.	4.62	4.51	4.57	4.48	4.47
7. I would recommend this school to other parents.	4.54	4.37	4.44	4.21	4.25
8. This school provides a safe environment for my child to learn.	4.38	4.50	4.57	4.45	4.55
9. My child is recognized for good work and behavior at this school.	4.00	4.46	4.59	4.44	4.47
10. The school is clean and well maintained.	4.46	4.69	4.67	4.63	4.62
11. The teachers, staff, and administration at this school demonstrate a genuine concern for my child.	4.54	4.47	4.49	4.30	4.37
12. I am proud to say I have a child at this school.	4.46	4.46	4.50	4.21	4.31
13. I receive positive phone calls or notes about my child from the school.	3.77	4.26	4.36	4.13	4.26
14. The principal at this school is approachable and reachable.	4.58	4.28	4.32	4.17	4.27
15. The principal at this school is an effective leader.	4.58	4.32	4.40	4.23	4.31
16. The Superintendent of the Escambia School District is an effective leader.	4.09	4.04	4.20	4.15	4.08
17. The Superintendent of the Escambia School District makes decisions that are in the best interest of children and parents of the district.	4.18	4.04	4.24	4.14	4.08

Hellen Caro Elementary School

	Mean 2011	Mean 2012	Mean 2013	Mean 2014	Mean 2015
Overall Mean	4.52	4.43	4.56	4.47	4.43
1. My child's learning is a high priority at this school.	4.71	4.65	4.68	4.62	4.56
2. School rules/discipline plans are enforced consistently at this school.	4.57	4.53	4.53	4.46	4.48
3. I regularly receive feedback from school staff on how well my child is learning.	4.47	4.45	4.55	4.37	4.31
4. My family is treated with respect at this school.	4.59	4.60	4.64	4.57	4.50
5. My child has every opportunity to be successful at this school.	4.60	4.43	4.60	4.53	4.46
6. My child has the necessary classroom supplies and equipment for effective learning.	4.59	4.45	4.61	4.53	4.46
7. I would recommend this school to other parents.	4.75	4.68	4.74	4.63	4.62
8. This school provides a safe environment for my child to learn.	4.73	4.65	4.71	4.65	4.60
9. My child is recognized for good work and behavior at this school.	4.62	4.68	4.71	4.58	4.56
10. The school is clean and well maintained.	4.62	4.28	4.58	4.49	4.54
11. The teachers, staff, and administration at this school demonstrate a genuine concern for my child.	4.62	4.50	4.64	4.51	4.50
12. I am proud to say I have a child at this school.	4.71	4.58	4.73	4.62	4.60
13. I receive positive phone calls or notes about my child from the school.	4.36	4.33	4.45	4.26	4.27
14. The principal at this school is approachable and reachable.	4.37	4.38	4.38	4.29	4.22
15. The principal at this school is an effective leader.	4.42	4.35	4.45	4.39	4.30
16. The Superintendent of the Escambia School District is an effective leader.	4.04	4.00	4.27	4.26	4.15
17. The Superintendent of the Escambia School District makes decisions that are in the best interest of children and parents of the district.	4.03	3.88	4.30	4.28	4.17

Holm Elementary School

	Mean 2011	Mean 2012	Mean 2013	Mean 2014	Mean 2015
Overall Mean	3.35	4.30	4.37	4.38	4.33
1. My child's learning is a high priority at this school.	3.50	4.44	4.48	4.52	4.46
2. School rules/discipline plans are enforced consistently at this school.	2.75	4.39	4.30	4.31	4.42
3. I regularly receive feedback from school staff on how well my child is learning.	3.75	4.44	4.40	4.53	4.10
4. My family is treated with respect at this school.	4.00	4.47	4.60	4.49	4.49
5. My child has every opportunity to be successful at this school.	3.75	4.38	4.39	4.40	4.30
6. My child has the necessary classroom supplies and equipment for effective learning.	3.25	4.43	4.40	4.46	4.57
7. I would recommend this school to other parents.	3.00	4.14	4.30	4.40	4.27
8. This school provides a safe environment for my child to learn.	3.25	4.38	4.43	4.36	4.58
9. My child is recognized for good work and behavior at this school.	3.75	4.43	4.41	4.46	4.35
10. The school is clean and well maintained.	2.75	4.36	4.44	4.41	4.36
11. The teachers, staff, and administration at this school demonstrate a genuine concern for my child.	3.75	4.30	4.51	4.49	4.46
12. I am proud to say I have a child at this school.	3.25	4.33	4.32	4.33	4.25
13. I receive positive phone calls or notes about my child from the school.	3.75	4.26	4.37	4.35	4.06
14. The principal at this school is approachable and reachable.	3.50	4.36	4.43	4.38	4.37
15. The principal at this school is an effective leader.	3.25	4.27	4.39	4.30	4.38
16. The Superintendent of the Escambia School District is an effective leader.	2.75	3.85	4.09	4.10	4.10
17. The Superintendent of the Escambia School District makes decisions that are in the best interest of children and parents of the district.	3.00	3.80	4.00	4.13	4.05

Jim Allen Elementary School

	Mean 2011	Mean 2012	Mean 2013	Mean 2014	Mean 2015
Overall Mean	n = 13	n = 10	4.65	4.68	4.60
1. My child's learning is a high priority at this school.			4.75	4.75	4.62
2. School rules/discipline plans are enforced consistently at this school.			4.57	4.61	4.50
3. I regularly receive feedback from school staff on how well my child is learning.			4.60	4.56	4.49
4. My family is treated with respect at this school.			4.73	4.75	4.64
5. My child has every opportunity to be successful at this school.			4.75	4.72	4.63
6. My child has the necessary classroom supplies and equipment for effective learning.			4.65	4.75	4.67
7. I would recommend this school to other parents.			4.73	4.72	4.67
8. This school provides a safe environment for my child to learn.			4.72	4.72	4.67
9. My child is recognized for good work and behavior at this school.			4.66	4.75	4.69
10. The school is clean and well maintained.			4.68	4.74	4.69
11. The teachers, staff, and administration at this school demonstrate a genuine concern for my child.			4.72	4.76	4.67
12. I am proud to say I have a child at this school.			4.73	4.73	4.67
13. I receive positive phone calls or notes about my child from the school.			4.46	4.55	4.54
14. The principal at this school is approachable and reachable.			4.66	4.65	4.59
15. The principal at this school is an effective leader.			4.69	4.69	4.61
16. The Superintendent of the Escambia School District is an effective leader.			4.50	4.55	4.41
17. The Superintendent of the Escambia School District makes decisions that are in the best interest of children and parents of the district.			4.44	4.52	4.39

Lincoln Park Elementary School

	Mean 2011	Mean 2012	Mean 2013	Mean 2014	Mean 2015
Overall Mean	4.04	4.32	4.36	4.56	4.71
1. My child's learning is a high priority at this school.	4.32	4.49	4.48	4.63	4.82
2. School rules/discipline plans are enforced consistently at this school.	4.17	4.33	4.23	4.55	4.71
3. I regularly receive feedback from school staff on how well my child is learning.	3.89	4.27	4.30	4.55	4.61
4. My family is treated with respect at this school.	4.34	4.51	4.52	4.68	4.79
5. My child has every opportunity to be successful at this school.	4.13	4.36	4.42	4.57	4.76
6. My child has the necessary classroom supplies and equipment for effective learning.	4.22	4.37	4.46	4.61	4.76
7. I would recommend this school to other parents.	4.09	4.28	4.19	4.35	4.74
8. This school provides a safe environment for my child to learn.	4.21	4.36	4.30	4.59	4.71
9. My child is recognized for good work and behavior at this school.	3.89	4.39	4.45	4.63	4.76
10. The school is clean and well maintained.	4.34	4.50	4.47	4.68	4.71
11. The teachers, staff, and administration at this school demonstrate a genuine concern for my child.	4.15	4.37	4.44	4.58	4.79
12. I am proud to say I have a child at this school.	4.19	4.35	4.33	4.45	4.82
13. I receive positive phone calls or notes about my child from the school.	3.63	4.26	4.27	4.47	4.71
14. The principal at this school is approachable and reachable.	3.96	4.39	4.36	4.61	4.87
15. The principal at this school is an effective leader.	3.94	4.41	4.44	4.58	4.87
16. The Superintendent of the Escambia School District is an effective leader.	3.64	3.93	4.19	4.36	4.34
17. The Superintendent of the Escambia School District makes decisions that are in the best interest of children and parents of the district.	3.60	3.88	4.22	4.49	4.32

Longleaf Elementary School

	Mean 2011	Mean 2012	Mean 2013	Mean 2014	Mean 2015
Overall Mean	4.34	4.25	4.36	4.30	4.27
1. My child's learning is a high priority at this school.	4.50	4.38	4.53	4.47	4.43
2. School rules/discipline plans are enforced consistently at this school.	4.37	4.33	4.34	4.25	4.11
3. I regularly receive feedback from school staff on how well my child is learning.	4.38	4.33	4.35	4.16	4.19
4. My family is treated with respect at this school.	4.53	4.38	4.48	4.35	4.43
5. My child has every opportunity to be successful at this school.	4.45	4.31	4.47	4.34	4.37
6. My child has the necessary classroom supplies and equipment for effective learning.	4.51	4.34	4.46	4.43	4.45
7. I would recommend this school to other parents.	4.42	4.27	4.36	4.27	4.30
8. This school provides a safe environment for my child to learn.	4.49	4.44	4.45	4.38	4.28
9. My child is recognized for good work and behavior at this school.	4.43	4.34	4.48	4.45	4.42
10. The school is clean and well maintained.	4.49	4.41	4.47	4.47	4.47
11. The teachers, staff, and administration at this school demonstrate a genuine concern for my child.	4.45	4.34	4.38	4.35	4.31
12. I am proud to say I have a child at this school.	4.44	4.35	4.35	4.32	4.27
13. I receive positive phone calls or notes about my child from the school.	4.27	4.14	4.24	4.20	4.17
14. The principal at this school is approachable and reachable.	4.10	4.08	4.33	4.24	4.23
15. The principal at this school is an effective leader.	4.10	4.11	4.31	4.26	4.28
16. The Superintendent of the Escambia School District is an effective leader.	3.92	3.85	4.06	4.12	3.97
17. The Superintendent of the Escambia School District makes decisions that are in the best interest of children and parents of the district.	3.90	3.85	4.09	4.12	3.97

McArthur Elementary School

	Mean 2011	Mean 2012	Mean 2013	Mean 2014	Mean 2015
Overall Mean	n = 6	n = 7	4.55	4.50	4.43
1. My child's learning is a high priority at this school.			4.58	4.62	4.68
2. School rules/discipline plans are enforced consistently at this school.			4.51	4.45	4.43
3. I regularly receive feedback from school staff on how well my child is learning.			4.54	4.48	4.29
4. My family is treated with respect at this school.			4.56	4.60	4.64
5. My child has every opportunity to be successful at this school.			4.66	4.55	4.50
6. My child has the necessary classroom supplies and equipment for effective learning.			4.68	4.60	4.71
7. I would recommend this school to other parents.			4.58	4.50	4.61
8. This school provides a safe environment for my child to learn.			4.66	4.54	4.57
9. My child is recognized for good work and behavior at this school.			4.66	4.63	4.57
10. The school is clean and well maintained.			4.68	4.60	4.59
11. The teachers, staff, and administration at this school demonstrate a genuine concern for my child.			4.52	4.59	4.75
12. I am proud to say I have a child at this school.			4.60	4.56	4.46
13. I receive positive phone calls or notes about my child from the school.			4.49	4.45	4.21
14. The principal at this school is approachable and reachable.			4.53	4.46	4.61
15. The principal at this school is an effective leader.			4.53	4.46	4.52
16. The Superintendent of the Escambia School District is an effective leader.			4.31	4.25	3.50
17. The Superintendent of the Escambia School District makes decisions that are in the best interest of children and parents of the district.			4.27	4.22	3.35

Molino Park Elementary School

	Mean 2011	Mean 2012	Mean 2013	Mean 2014	Mean 2015
Overall Mean	4.59	4.58	n = 9	4.62	n = 1
1. My child's learning is a high priority at this school.	4.77	4.74		4.67	
2. School rules/discipline plans are enforced consistently at this school.	4.59	4.39		4.59	
3. I regularly receive feedback from school staff on how well my child is learning.	4.59	4.48		4.42	
4. My family is treated with respect at this school.	4.62	4.65		4.76	
5. My child has every opportunity to be successful at this school.	4.69	4.65		4.65	
6. My child has the necessary classroom supplies and equipment for effective learning.	4.72	4.65		4.57	
7. I would recommend this school to other parents.	4.72	4.68		4.66	
8. This school provides a safe environment for my child to learn.	4.72	4.74		4.80	
9. My child is recognized for good work and behavior at this school.	4.79	4.61		4.64	
10. The school is clean and well maintained.	4.79	4.91		4.77	
11. The teachers, staff, and administration at this school demonstrate a genuine concern for my child.	4.69	4.65		4.71	
12. I am proud to say I have a child at this school.	4.72	4.70		4.71	
13. I receive positive phone calls or notes about my child from the school.	4.21	4.13		4.31	
14. The principal at this school is approachable and reachable.	4.45	4.43		4.69	
15. The principal at this school is an effective leader.	4.50	4.35		4.65	
16. The Superintendent of the Escambia School District is an effective leader.	4.25	4.57		4.50	
17. The Superintendent of the Escambia School District makes decisions that are in the best interest of children and parents of the district.	4.11	4.48		4.49	

Montclair Elementary School

	Mean 2011	Mean 2012	Mean 2013	Mean 2014	Mean 2015
Overall Mean	Missing	n = 0	4.16	4.06	4.18
1. My child's learning is a high priority at this school.			4.37	4.30	4.31
2. School rules/discipline plans are enforced consistently at this school.			4.15	4.09	4.25
3. I regularly receive feedback from school staff on how well my child is learning.			4.26	4.14	3.98
4. My family is treated with respect at this school.			4.34	4.24	4.41
5. My child has every opportunity to be successful at this school.			4.03	4.18	4.20
6. My child has the necessary classroom supplies and equipment for effective learning.			4.10	4.09	4.38
7. I would recommend this school to other parents.			3.71	3.75	3.94
8. This school provides a safe environment for my child to learn.			3.98	3.96	4.20
9. My child is recognized for good work and behavior at this school.			4.32	4.21	4.38
10. The school is clean and well maintained.			4.33	4.18	4.44
11. The teachers, staff, and administration at this school demonstrate a genuine concern for my child.			4.15	3.98	4.29
12. I am proud to say I have a child at this school.			4.08	4.02	4.02
13. I receive positive phone calls or notes about my child from the school.			4.17	3.98	4.09
14. The principal at this school is approachable and reachable.			4.18	4.13	4.13
15. The principal at this school is an effective leader.			4.25	4.07	4.24
16. The Superintendent of the Escambia School District is an effective leader.			4.18	3.82	3.90
17. The Superintendent of the Escambia School District makes decisions that are in the best interest of children and parents of the district.			4.05	3.86	3.97

Myrtle Grove Elementary School

	Mean 2011	Mean 2012	Mean 2013	Mean 2014	Mean 2015
Overall Mean	n = 18	4.60	4.59	4.44	4.33
1. My child's learning is a high priority at this school.		4.72	4.60	4.52	4.50
2. School rules/discipline plans are enforced consistently at this school.		4.65	4.51	4.41	4.29
3. I regularly receive feedback from school staff on how well my child is learning.		4.56	4.73	4.45	4.34
4. My family is treated with respect at this school.		4.74	4.76	4.55	4.53
5. My child has every opportunity to be successful at this school.		4.65	4.66	4.51	4.39
6. My child has the necessary classroom supplies and equipment for effective learning.		4.60	4.69	4.46	4.44
7. I would recommend this school to other parents.		4.74	4.61	4.43	4.22
8. This school provides a safe environment for my child to learn.		4.65	4.57	4.49	4.45
9. My child is recognized for good work and behavior at this school.		4.76	4.69	4.57	4.47
10. The school is clean and well maintained.		4.66	4.57	4.47	4.34
11. The teachers, staff, and administration at this school demonstrate a genuine concern for my child.		4.75	4.75	4.58	4.41
12. I am proud to say I have a child at this school.		4.75	4.69	4.44	4.31
13. I receive positive phone calls or notes about my child from the school.		4.55	4.56	4.31	4.15
14. The principal at this school is approachable and reachable.		4.59	4.66	4.42	4.42
15. The principal at this school is an effective leader.		4.54	4.65	4.44	4.30
16. The Superintendent of the Escambia School District is an effective leader.		4.20	4.19	4.20	4.05
17. The Superintendent of the Escambia School District makes decisions that are in the best interest of children and parents of the district.		4.07	4.12	4.20	4.07

N.B. Cook Elementary School

	Mean 2011	Mean 2012	Mean 2013	Mean 2014	Mean 2015
Overall Mean	4.37	4.53	4.65	4.53	4.41
1. My child's learning is a high priority at this school.	4.50	4.76	4.88	4.71	4.63
2. School rules/discipline plans are enforced consistently at this school.	4.47	4.62	4.62	4.48	4.39
3. I regularly receive feedback from school staff on how well my child is learning.	4.28	4.42	4.55	4.46	4.21
4. My family is treated with respect at this school.	4.53	4.64	4.74	4.64	4.67
5. My child has every opportunity to be successful at this school.	4.44	4.57	4.74	4.61	4.42
6. My child has the necessary classroom supplies and equipment for effective learning.	4.29	4.65	4.69	4.54	4.30
7. I would recommend this school to other parents.	4.53	4.73	4.81	4.74	4.69
8. This school provides a safe environment for my child to learn.	4.63	4.71	4.71	4.71	4.60
9. My child is recognized for good work and behavior at this school.	4.34	4.53	4.71	4.64	4.39
10. The school is clean and well maintained.	4.53	4.73	4.57	4.58	4.58
11. The teachers, staff, and administration at this school demonstrate a genuine concern for my child.	4.44	4.64	4.74	4.55	4.49
12. I am proud to say I have a child at this school.	4.50	4.75	4.81	4.74	4.67
13. I receive positive phone calls or notes about my child from the school.	4.03	3.98	4.45	4.18	3.99
14. The principal at this school is approachable and reachable.	4.50	4.65	4.81	4.69	4.69
15. The principal at this school is an effective leader.	4.44	4.67	4.74	4.63	4.55
16. The Superintendent of the Escambia School District is an effective leader.	3.94	3.96	4.26	4.05	3.78
17. The Superintendent of the Escambia School District makes decisions that are in the best interest of children and parents of the district.	3.84	3.94	4.29	4.14	3.84

Navy Point Elementary School

	Mean 2011	Mean 2012	Mean 2013	Mean 2014	Mean 2015
Overall Mean	4.37	4.40	4.46	3.24	n = 2
1. My child's learning is a high priority at this school.	4.52	4.55	4.57	3.29	
2. School rules/discipline plans are enforced consistently at this school.	4.44	4.40	4.40	3.12	
3. I regularly receive feedback from school staff on how well my child is learning.	4.31	4.49	4.52	3.14	
4. My family is treated with respect at this school.	4.44	4.45	4.48	3.24	
5. My child has every opportunity to be successful at this school.	4.47	4.46	4.48	3.26	
6. My child has the necessary classroom supplies and equipment for effective learning.	4.51	4.44	4.53	3.31	
7. I would recommend this school to other parents.	4.41	4.41	4.40	3.16	
8. This school provides a safe environment for my child to learn.	4.48	4.50	4.53	3.29	
9. My child is recognized for good work and behavior at this school.	4.45	4.52	4.54	3.33	
10. The school is clean and well maintained.	4.54	4.45	4.55	3.39	
11. The teachers, staff, and administration at this school demonstrate a genuine concern for my child.	4.47	4.42	4.50	3.23	
12. I am proud to say I have a child at this school.	4.48	4.43	4.44	3.22	
13. I receive positive phone calls or notes about my child from the school.	4.25	4.36	4.46	3.21	
14. The principal at this school is approachable and reachable.	4.23	4.31	4.42	3.26	
15. The principal at this school is an effective leader.	4.27	4.30	4.43	3.23	
16. The Superintendent of the Escambia School District is an effective leader.	4.02	4.12	4.33	3.13	
17. The Superintendent of the Escambia School District makes decisions that are in the best interest of children and parents of the district.	3.99	4.13	4.30	3.12	

Oakcrest Elementary School

	Mean 2011	Mean 2012	Mean 2013	Mean 2014	Mean 2015
Overall Mean	4.48	4.36	4.44	4.47	4.35
1. My child's learning is a high priority at this school.	4.61	4.45	4.50	4.54	4.50
2. School rules/discipline plans are enforced consistently at this school.	4.51	4.35	4.46	4.46	4.40
3. I regularly receive feedback from school staff on how well my child is learning.	4.44	4.32	4.37	4.38	4.26
4. My family is treated with respect at this school.	4.50	4.37	4.54	4.54	4.49
5. My child has every opportunity to be successful at this school.	4.54	4.45	4.50	4.48	4.40
6. My child has the necessary classroom supplies and equipment for effective learning.	4.58	4.44	4.55	4.49	4.47
7. I would recommend this school to other parents.	4.51	4.32	4.45	4.40	4.27
8. This school provides a safe environment for my child to learn.	4.47	4.42	4.59	4.59	4.37
9. My child is recognized for good work and behavior at this school.	4.55	4.48	4.50	4.54	4.45
10. The school is clean and well maintained.	4.56	4.49	4.55	4.60	4.42
11. The teachers, staff, and administration at this school demonstrate a genuine concern for my child.	4.51	4.47	4.50	4.52	4.42
12. I am proud to say I have a child at this school.	4.51	4.42	4.49	4.49	4.33
13. I receive positive phone calls or notes about my child from the school.	4.38	4.27	4.23	4.40	4.16
14. The principal at this school is approachable and reachable.	4.38	4.28	4.45	4.47	4.29
15. The principal at this school is an effective leader.	4.48	4.34	4.45	4.49	4.27
16. The Superintendent of the Escambia School District is an effective leader.	4.27	4.08	4.25	4.32	4.18
17. The Superintendent of the Escambia School District makes decisions that are in the best interest of children and parents of the district.	4.27	4.12	4.26	4.37	4.24

O.J. Semmes Elementary School

	Mean 2011	Mean 2012	Mean 2013	Mean 2014	Mean 2015
Overall Mean	Missing	n = 1	4.18	4.25	4.35
1. My child's learning is a high priority at this school.			4.31	4.38	4.51
2. School rules/discipline plans are enforced consistently at this school.			4.31	4.36	4.46
3. I regularly receive feedback from school staff on how well my child is learning.			4.29	4.34	4.36
4. My family is treated with respect at this school.			4.25	4.32	4.47
5. My child has every opportunity to be successful at this school.			4.35	4.31	4.44
6. My child has the necessary classroom supplies and equipment for effective learning.			4.44	4.33	4.52
7. I would recommend this school to other parents.			3.98	4.07	4.15
8. This school provides a safe environment for my child to learn.			4.28	4.38	4.40
9. My child is recognized for good work and behavior at this school.			4.47	4.35	4.56
10. The school is clean and well maintained.			4.04	4.22	4.37
11. The teachers, staff, and administration at this school demonstrate a genuine concern for my child.			4.16	4.40	4.34
12. I am proud to say I have a child at this school.			4.09	4.19	4.31
13. I receive positive phone calls or notes about my child from the school.			4.14	4.19	4.33
14. The principal at this school is approachable and reachable.			3.98	4.14	4.32
15. The principal at this school is an effective leader.			4.10	4.21	4.27
16. The Superintendent of the Escambia School District is an effective leader.			3.96	4.11	4.08
17. The Superintendent of the Escambia School District makes decisions that are in the best interest of children and parents of the district.			3.98	4.10	4.11

Pine Meadow Elementary School

	Mean 2011	Mean 2012	Mean 2013	Mean 2014	Mean 2015
Overall Mean	4.43	4.12	4.44	4.52	4.55
1. My child's learning is a high priority at this school.	4.64	4.26	4.53	4.65	4.67
2. School rules/discipline plans are enforced consistently at this school.	4.45	4.08	4.49	4.57	4.58
3. I regularly receive feedback from school staff on how well my child is learning.	4.46	4.28	4.38	4.43	4.51
4. My family is treated with respect at this school.	4.50	4.21	4.49	4.52	4.61
5. My child has every opportunity to be successful at this school.	4.50	4.08	4.44	4.55	4.59
6. My child has the necessary classroom supplies and equipment for effective learning.	4.49	3.94	4.45	4.55	4.57
7. I would recommend this school to other parents.	4.58	4.14	4.55	4.61	4.64
8. This school provides a safe environment for my child to learn.	4.58	4.14	4.56	4.66	4.68
9. My child is recognized for good work and behavior at this school.	4.50	4.28	4.53	4.56	4.61
10. The school is clean and well maintained.	4.43	4.00	4.46	4.52	4.55
11. The teachers, staff, and administration at this school demonstrate a genuine concern for my child.	4.54	4.19	4.51	4.56	4.61
12. I am proud to say I have a child at this school.	4.58	4.17	4.54	4.62	4.68
13. I receive positive phone calls or notes about my child from the school.	4.29	4.06	4.27	4.33	4.42
14. The principal at this school is approachable and reachable.	4.34	4.28	4.42	4.40	4.47
15. The principal at this school is an effective leader.	4.34	4.09	4.43	4.47	4.53
16. The Superintendent of the Escambia School District is an effective leader.	4.07	3.91	4.27	4.43	4.35
17. The Superintendent of the Escambia School District makes decisions that are in the best interest of children and parents of the district.	4.01	3.91	4.22	4.45	4.34

Pleasant Grove Elementary School

	Mean 2011	Mean 2012	Mean 2013	Mean 2014	Mean 2015
Overall Mean	n = 17	3.95	4.49	4.50	4.53
1. My child's learning is a high priority at this school.		4.27	4.66	4.62	4.60
2. School rules/discipline plans are enforced consistently at this school.		3.81	4.49	4.48	4.50
3. I regularly receive feedback from school staff on how well my child is learning.		4.00	4.54	4.27	4.40
4. My family is treated with respect at this school.		4.12	4.68	4.66	4.64
5. My child has every opportunity to be successful at this school.		3.92	4.44	4.55	4.58
6. My child has the necessary classroom supplies and equipment for effective learning.		4.23	4.48	4.65	4.67
7. I would recommend this school to other parents.		4.00	4.41	4.59	4.67
8. This school provides a safe environment for my child to learn.		4.38	4.48	4.67	4.66
9. My child is recognized for good work and behavior at this school.		4.12	4.62	4.58	4.66
10. The school is clean and well maintained.		4.04	4.53	4.53	4.57
11. The teachers, staff, and administration at this school demonstrate a genuine concern for my child.		3.96	4.65	4.52	4.59
12. I am proud to say I have a child at this school.		4.00	4.56	4.60	4.65
13. I receive positive phone calls or notes about my child from the school.		3.88	4.42	4.30	4.35
14. The principal at this school is approachable and reachable.		3.50	4.35	4.50	4.49
15. The principal at this school is an effective leader.		3.50	4.37	4.48	4.52
16. The Superintendent of the Escambia School District is an effective leader.		3.76	4.35	4.25	4.24
17. The Superintendent of the Escambia School District makes decisions that are in the best interest of children and parents of the district.		3.72	4.28	4.23	4.17

R. C. Lipscomb Elementary School

	Mean 2011	Mean 2012	Mean 2013	Mean 2014	Mean 2015
Overall Mean	4.69	4.49	4.55	4.52	3.26
1. My child's learning is a high priority at this school.	4.77	4.69	4.68	4.64	2.89
2. School rules/discipline plans are enforced consistently at this school.	4.54	4.44	4.62	4.52	3.11
3. I regularly receive feedback from school staff on how well my child is learning.	4.73	4.50	4.53	4.47	2.78
4. My family is treated with respect at this school.	4.85	4.63	4.62	4.60	2.78
5. My child has every opportunity to be successful at this school.	4.73	4.56	4.58	4.51	3.00
6. My child has the necessary classroom supplies and equipment for effective learning.	4.69	4.31	4.67	4.62	3.67
7. I would recommend this school to other parents.	4.81	4.69	4.67	4.58	3.00
8. This school provides a safe environment for my child to learn.	4.73	4.75	4.70	4.67	3.78
9. My child is recognized for good work and behavior at this school.	4.64	4.50	4.66	4.62	3.22
10. The school is clean and well maintained.	4.60	4.38	4.68	4.63	3.33
11. The teachers, staff, and administration at this school demonstrate a genuine concern for my child.	4.69	4.56	4.55	4.61	3.44
12. I am proud to say I have a child at this school.	4.81	4.69	4.66	4.60	3.22
13. I receive positive phone calls or notes about my child from the school.	4.46	4.56	4.39	4.38	3.00
14. The principal at this school is approachable and reachable.	4.88	4.53	4.29	4.28	3.33
15. The principal at this school is an effective leader.	4.69	4.44	4.38	4.34	3.33
16. The Superintendent of the Escambia School District is an effective leader.	4.62	4.13	4.34	4.33	3.78
17. The Superintendent of the Escambia School District makes decisions that are in the best interest of children and parents of the district.	4.50	4.06	4.32	4.38	3.88

Scenic Heights Elementary School

	Mean 2011	Mean 2012	Mean 2013	Mean 2014	Mean 2015
Overall Mean	4.39	4.34	4.19	4.42	4.48
1. My child's learning is a high priority at this school.	4.55	4.45	4.36	4.59	4.61
2. School rules/discipline plans are enforced consistently at this school.	4.47	4.55	4.09	4.44	4.50
3. I regularly receive feedback from school staff on how well my child is learning.	4.38	4.18	4.09	4.34	4.41
4. My family is treated with respect at this school.	4.52	4.36	4.55	4.55	4.62
5. My child has every opportunity to be successful at this school.	4.50	4.55	4.45	4.49	4.52
6. My child has the necessary classroom supplies and equipment for effective learning.	4.50	4.45	4.36	4.55	4.61
7. I would recommend this school to other parents.	4.55	4.73	4.45	4.53	4.59
8. This school provides a safe environment for my child to learn.	4.56	4.73	4.09	4.52	4.59
9. My child is recognized for good work and behavior at this school.	4.52	4.64	4.55	4.48	4.60
10. The school is clean and well maintained.	4.48	4.27	4.00	4.50	4.56
11. The teachers, staff, and administration at this school demonstrate a genuine concern for my child.	4.42	4.45	4.27	4.45	4.54
12. I am proud to say I have a child at this school.	4.55	4.64	4.36	4.51	4.61
13. I receive positive phone calls or notes about my child from the school.	4.21	4.27	3.80	4.16	4.23
14. The principal at this school is approachable and reachable.	4.27	4.00	3.91	4.30	4.42
15. The principal at this school is an effective leader.	4.32	3.91	3.73	4.37	4.40
16. The Superintendent of the Escambia School District is an effective leader.	3.94	3.73	4.00	4.22	4.19
17. The Superintendent of the Escambia School District makes decisions that are in the best interest of children and parents of the district.	3.88	3.82	4.09	4.18	4.14

Sherwood Elementary School

	Mean 2011	Mean 2012	Mean 2013	Mean 2014	Mean 2015
Overall Mean	4.42	4.34	4.46	4.42	4.57
1. My child's learning is a high priority at this school.	4.65	4.50	4.58	4.50	4.73
2. School rules/discipline plans are enforced consistently at this school.	4.51	4.37	4.44	4.48	4.59
3. I regularly receive feedback from school staff on how well my child is learning.	4.51	4.37	4.36	4.31	4.64
4. My family is treated with respect at this school.	4.62	4.47	4.53	4.53	4.69
5. My child has every opportunity to be successful at this school.	4.56	4.42	4.45	4.45	4.67
6. My child has the necessary classroom supplies and equipment for effective learning.	4.60	4.41	4.48	4.45	4.77
7. I would recommend this school to other parents.	4.45	4.42	4.48	4.44	4.59
8. This school provides a safe environment for my child to learn.	4.56	4.48	4.51	4.57	4.72
9. My child is recognized for good work and behavior at this school.	4.51	4.43	4.54	4.54	4.69
10. The school is clean and well maintained.	4.52	4.35	4.52	4.41	4.74
11. The teachers, staff, and administration at this school demonstrate a genuine concern for my child.	4.49	4.40	4.49	4.49	4.69
12. I am proud to say I have a child at this school.	4.42	4.43	4.47	4.42	4.64
13. I receive positive phone calls or notes about my child from the school.	4.33	4.19	4.34	4.25	4.62
14. The principal at this school is approachable and reachable.	4.23	4.34	4.48	4.44	4.60
15. The principal at this school is an effective leader.	4.22	4.35	4.54	4.45	4.64
16. The Superintendent of the Escambia School District is an effective leader.	3.97	3.93	4.32	4.21	3.88
17. The Superintendent of the Escambia School District makes decisions that are in the best interest of children and parents of the district.	3.93	3.91	4.28	4.23	3.88

Warrington Elementary School

	Mean 2011	Mean 2012	Mean 2013	Mean 2014	Mean 2015
Overall Mean	2.87	4.13	4.15	4.58	4.39
1. My child's learning is a high priority at this school.	3.20	4.23	4.18	4.50	4.57
2. School rules/discipline plans are enforced consistently at this school.	2.80	4.03	4.11	4.50	4.52
3. I regularly receive feedback from school staff on how well my child is learning.	3.20	4.26	4.14	4.46	4.42
4. My family is treated with respect at this school.	2.60	4.15	4.20	4.57	4.50
5. My child has every opportunity to be successful at this school.	2.80	4.08	4.13	4.64	4.44
6. My child has the necessary classroom supplies and equipment for effective learning.	2.40	4.32	4.21	4.71	4.54
7. I would recommend this school to other parents.	2.60	3.96	4.07	4.52	4.15
8. This school provides a safe environment for my child to learn.	2.80	4.20	4.18	4.62	4.37
9. My child is recognized for good work and behavior at this school.	3.40	4.22	4.16	4.71	4.48
10. The school is clean and well maintained.	2.80	4.27	4.45	4.68	4.54
11. The teachers, staff, and administration at this school demonstrate a genuine concern for my child.	2.60	4.14	4.16	4.68	4.52
12. I am proud to say I have a child at this school.	3.00	4.06	4.02	4.55	4.42
13. I receive positive phone calls or notes about my child from the school.	3.20	4.10	4.02	4.65	4.22
14. The principal at this school is approachable and reachable.	2.80	4.07	4.04	4.51	4.24
15. The principal at this school is an effective leader.	2.60	4.12	4.05	4.58	4.35
16. The Superintendent of the Escambia School District is an effective leader.	3.20	4.04	4.25	4.63	4.22
17. The Superintendent of the Escambia School District makes decisions that are in the best interest of children and parents of the district.	2.80	3.99	4.15	4.63	4.21

West Pensacola Elementary School

	Mean 2011	Mean 2012	Mean 2013	Mean 2014	Mean 2015
Overall Mean	4.32	4.35	4.39	4.33	4.35
1. My child's learning is a high priority at this school.	4.50	4.32	4.51	4.38	4.55
2. School rules/discipline plans are enforced consistently at this school.	4.50	4.47	4.34	4.34	4.27
3. I regularly receive feedback from school staff on how well my child is learning.	4.17	4.26	4.48	4.28	4.33
4. My family is treated with respect at this school.	4.50	4.53	4.48	4.43	4.40
5. My child has every opportunity to be successful at this school.	4.50	4.47	4.45	4.34	4.33
6. My child has the necessary classroom supplies and equipment for effective learning.	4.67	4.58	4.53	4.36	4.42
7. I would recommend this school to other parents.	4.17	4.21	4.25	4.17	4.20
8. This school provides a safe environment for my child to learn.	4.67	4.42	4.43	4.44	4.33
9. My child is recognized for good work and behavior at this school.	4.50	4.32	4.54	4.45	4.53
10. The school is clean and well maintained.	4.17	4.53	4.43	4.45	4.45
11. The teachers, staff, and administration at this school demonstrate a genuine concern for my child.	4.33	4.58	4.43	4.43	4.45
12. I am proud to say I have a child at this school.	4.33	4.21	4.32	4.25	4.35
13. I receive positive phone calls or notes about my child from the school.	4.33	4.21	4.34	4.30	4.36
14. The principal at this school is approachable and reachable.	4.17	4.37	4.19	4.28	4.22
15. The principal at this school is an effective leader.	4.00	4.37	4.30	4.32	4.36
16. The Superintendent of the Escambia School District is an effective leader.	4.00	4.11	4.28	4.24	4.22
17. The Superintendent of the Escambia School District makes decisions that are in the best interest of children and parents of the district.	4.00	4.00	4.31	4.21	4.19

Bellview Middle School

	Mean 2011	Mean 2012	Mean 2013	Mean 2014	Mean 2015
Overall Mean	n = 14	n = 5	4.05	2.84	n = 4
1. My child's learning is a high priority at this school.			4.30	3.64	
2. School rules/discipline plans are enforced consistently at this school.			4.21	2.55	
3. I regularly receive feedback from school staff on how well my child is learning.			3.71	2.55	
4. My family is treated with respect at this school.			4.26	3.00	
5. My child has every opportunity to be successful at this school.			4.25	3.09	
6. My child has the necessary classroom supplies and equipment for effective learning.			4.26	3.45	
7. I would recommend this school to other parents.			3.93	2.45	
8. This school provides a safe environment for my child to learn.			4.09	2.82	
9. My child is recognized for good work and behavior at this school.			4.09	3.18	
10. The school is clean and well maintained.			4.09	3.18	
11. The teachers, staff, and administration at this school demonstrate a genuine concern for my child.			4.18	2.90	
12. I am proud to say I have a child at this school.			4.07	2.64	
13. I receive positive phone calls or notes about my child from the school.			3.49	2.82	
14. The principal at this school is approachable and reachable.			3.99	2.64	
15. The principal at this school is an effective leader.			3.98	2.60	
16. The Superintendent of the Escambia School District is an effective leader.			4.01	2.45	
17. The Superintendent of the Escambia School District makes decisions that are in the best interest of children and parents of the district.			3.95	2.36	

Brown Barge Middle School

	Mean 2011	Mean 2012	Mean 2013	Mean 2014	Mean 2015
Overall Mean	3.98	3.63	4.49	4.39	4.02
1. My child's learning is a high priority at this school.	4.38	3.67	4.71	4.68	4.33
2. School rules/discipline plans are enforced consistently at this school.	4.15	3.92	4.65	4.49	4.00
3. I regularly receive feedback from school staff on how well my child is learning.	3.38	2.67	4.35	4.19	3.63
4. My family is treated with respect at this school.	4.10	4.08	4.57	4.68	4.23
5. My child has every opportunity to be successful at this school.	4.19	3.83	4.67	4.51	4.39
6. My child has the necessary classroom supplies and equipment for effective learning.	4.24	4.08	4.31	4.37	4.10
7. I would recommend this school to other parents.	4.10	3.92	4.67	4.62	4.33
8. This school provides a safe environment for my child to learn.	4.33	4.25	4.49	4.54	4.31
9. My child is recognized for good work and behavior at this school.	3.71	3.17	4.55	4.29	3.98
10. The school is clean and well maintained.	4.00	4.00	4.50	4.25	3.83
11. The teachers, staff, and administration at this school demonstrate a genuine concern for my child.	4.05	3.67	4.53	4.55	4.13
12. I am proud to say I have a child at this school.	4.29	4.00	4.69	4.66	4.38
13. I receive positive phone calls or notes about my child from the school.	2.70	2.75	4.00	3.96	3.62
14. The principal at this school is approachable and reachable.	4.24	3.42	4.55	4.37	3.87
15. The principal at this school is an effective leader.	4.24	3.42	4.47	4.29	3.94
16. The Superintendent of the Escambia School District is an effective leader.	3.76	3.50	4.33	4.09	3.62
17. The Superintendent of the Escambia School District makes decisions that are in the best interest of children and parents of the district.	3.81	3.42	4.33	4.07	3.63

Ernest Ward Middle School

	Mean 2011	Mean 2012	Mean 2013	Mean 2014	Mean 2015
Overall Mean	Missing	n = 3	4.08	4.10	3.86
1. My child's learning is a high priority at this school.			4.22	4.37	3.81
2. School rules/discipline plans are enforced consistently at this school.			4.22	4.19	3.84
3. I regularly receive feedback from school staff on how well my child is learning.			3.65	3.44	3.19
4. My family is treated with respect at this school.			4.25	4.42	4.13
5. My child has every opportunity to be successful at this school.			4.19	4.23	3.84
6. My child has the necessary classroom supplies and equipment for effective learning.			4.28	4.13	4.23
7. I would recommend this school to other parents.			4.10	4.25	4.16
8. This school provides a safe environment for my child to learn.			4.28	4.42	4.27
9. My child is recognized for good work and behavior at this school.			4.12	4.06	3.93
10. The school is clean and well maintained.			3.93	3.92	4.37
11. The teachers, staff, and administration at this school demonstrate a genuine concern for my child.			3.94	4.19	3.87
12. I am proud to say I have a child at this school.			4.11	4.23	4.17
13. I receive positive phone calls or notes about my child from the school.			3.62	3.23	2.97
14. The principal at this school is approachable and reachable.			4.22	4.29	3.90
15. The principal at this school is an effective leader.			4.30	4.31	4.00
16. The Superintendent of the Escambia School District is an effective leader.			4.04	4.00	3.90
17. The Superintendent of the Escambia School District makes decisions that are in the best interest of children and parents of the district.			4.00	4.04	3.83

Ferry Pass Middle School

	Mean 2011	Mean 2012	Mean 2013	Mean 2014	Mean 2015
Overall Mean	3.93	4.01	4.14	4.07	4.07
1. My child's learning is a high priority at this school.	4.24	4.23	4.30	4.29	4.35
2. School rules/discipline plans are enforced consistently at this school.	4.09	4.05	4.20	4.13	4.12
3. I regularly receive feedback from school staff on how well my child is learning.	3.45	3.47	3.66	3.59	3.61
4. My family is treated with respect at this school.	4.08	4.16	4.34	4.21	4.28
5. My child has every opportunity to be successful at this school.	4.10	4.22	4.30	4.23	4.24
6. My child has the necessary classroom supplies and equipment for effective learning.	4.17	4.18	4.32	4.24	4.26
7. I would recommend this school to other parents.	4.03	4.11	4.24	4.11	4.18
8. This school provides a safe environment for my child to learn.	4.06	4.14	4.24	4.16	4.27
9. My child is recognized for good work and behavior at this school.	3.93	4.02	4.11	4.04	4.16
10. The school is clean and well maintained.	4.04	4.01	4.20	4.10	4.03
11. The teachers, staff, and administration at this school demonstrate a genuine concern for my child.	3.92	3.95	4.12	4.08	4.11
12. I am proud to say I have a child at this school.	3.96	4.12	4.22	4.10	4.19
13. I receive positive phone calls or notes about my child from the school.	3.35	3.64	3.70	3.58	3.57
14. The principal at this school is approachable and reachable.	4.02	4.12	4.20	4.12	4.01
15. The principal at this school is an effective leader.	4.10	4.15	4.29	4.20	4.06
16. The Superintendent of the Escambia School District is an effective leader.	3.66	3.80	4.03	3.98	3.93
17. The Superintendent of the Escambia School District makes decisions that are in the best interest of children and parents of the district.	3.57	3.76	4.00	4.00	3.92

James C. Bailey Middle School

	Mean 2011	Mean 2012	Mean 2013	Mean 2014	Mean 2015
Overall Mean	4.01	3.76	4.20	3.76	3.17
1. My child's learning is a high priority at this school.	4.36	3.85	4.45	3.99	3.36
2. School rules/discipline plans are enforced consistently at this school.	4.15	3.88	4.26	3.85	3.59
3. I regularly receive feedback from school staff on how well my child is learning.	3.59	3.24	3.67	3.11	2.24
4. My family is treated with respect at this school.	4.11	4.00	4.31	4.13	3.48
5. My child has every opportunity to be successful at this school.	4.13	3.95	4.33	3.89	3.21
6. My child has the necessary classroom supplies and equipment for effective learning.	4.22	4.05	4.35	4.14	3.66
7. I would recommend this school to other parents.	4.21	4.02	4.39	3.89	3.14
8. This school provides a safe environment for my child to learn.	4.24	3.85	4.36	3.88	3.59
9. My child is recognized for good work and behavior at this school.	4.01	3.59	4.20	3.81	3.10
10. The school is clean and well maintained.	4.25	4.27	4.42	4.21	4.07
11. The teachers, staff, and administration at this school demonstrate a genuine concern for my child.	3.96	3.71	4.16	3.65	3.07
12. I am proud to say I have a child at this school.	4.12	3.90	4.30	3.79	3.17
13. I receive positive phone calls or notes about my child from the school.	3.49	2.75	3.61	2.94	1.97
14. The principal at this school is approachable and reachable.	3.84	3.63	4.10	3.61	2.62
15. The principal at this school is an effective leader.	3.99	3.73	4.24	3.75	2.76
16. The Superintendent of the Escambia School District is an effective leader.	3.72	3.74	4.17	3.66	3.38
17. The Superintendent of the Escambia School District makes decisions that are in the best interest of children and parents of the district.	3.70	3.65	4.13	3.65	3.45

Ransom Middle School

	Mean 2011	Mean 2012	Mean 2013	Mean 2014	Mean 2015
Overall Mean	4.11	4.15	4.35	3.96	3.81
1. My child's learning is a high priority at this school.	4.39	4.43	4.54	4.20	4.12
2. School rules/discipline plans are enforced consistently at this school.	4.15	4.02	4.46	3.98	3.86
3. I regularly receive feedback from school staff on how well my child is learning.	3.37	3.25	3.54	3.01	2.91
4. My family is treated with respect at this school.	4.23	4.43	4.62	4.15	4.02
5. My child has every opportunity to be successful at this school.	4.23	4.35	4.54	4.09	3.93
6. My child has the necessary classroom supplies and equipment for effective learning.	4.23	4.33	4.62	4.17	4.19
7. I would recommend this school to other parents.	4.28	4.41	4.46	4.20	3.95
8. This school provides a safe environment for my child to learn.	4.44	4.49	4.38	4.27	3.88
9. My child is recognized for good work and behavior at this school.	3.92	4.02	4.23	3.92	3.63
10. The school is clean and well maintained.	4.54	4.49	4.46	4.30	4.17
11. The teachers, staff, and administration at this school demonstrate a genuine concern for my child.	4.23	4.18	4.46	3.82	3.53
12. I am proud to say I have a child at this school.	4.32	4.39	4.46	4.20	3.90
13. I receive positive phone calls or notes about my child from the school.	3.04	2.96	3.31	2.89	2.95
14. The principal at this school is approachable and reachable.	4.46	4.51	4.69	4.03	4.14
15. The principal at this school is an effective leader.	4.32	4.49	4.75	4.07	4.19
16. The Superintendent of the Escambia School District is an effective leader.	3.89	3.90	4.31	4.05	3.93
17. The Superintendent of the Escambia School District makes decisions that are in the best interest of children and parents of the district.	3.85	3.86	4.23	4.00	3.85

Warrington Middle School

	Mean 2011	Mean 2012	Mean 2013	Mean 2014	Mean 2015
Overall Mean	4.15	4.17	4.31	4.31	3.76
1. My child's learning is a high priority at this school.	4.00	4.25	4.44	4.40	4.06
2. School rules/discipline plans are enforced consistently at this school.	4.00	4.32	4.41	4.35	3.93
3. I regularly receive feedback from school staff on how well my child is learning.	3.96	3.91	3.91	4.10	3.23
4. My family is treated with respect at this school.	4.44	4.35	4.51	4.54	3.92
5. My child has every opportunity to be successful at this school.	4.22	4.28	4.53	4.42	3.91
6. My child has the necessary classroom supplies and equipment for effective learning.	4.41	4.39	4.36	4.38	3.99
7. I would recommend this school to other parents.	3.96	4.12	4.26	4.23	3.58
8. This school provides a safe environment for my child to learn.	4.07	4.13	4.36	4.17	3.73
9. My child is recognized for good work and behavior at this school.	4.11	4.12	4.39	4.15	3.96
10. The school is clean and well maintained.	4.44	4.35	4.34	4.46	3.79
11. The teachers, staff, and administration at this school demonstrate a genuine concern for my child.	4.19	4.23	4.37	4.49	3.77
12. I am proud to say I have a child at this school.	4.04	4.12	4.25	4.23	3.64
13. I receive positive phone calls or notes about my child from the school.	3.93	3.71	4.08	3.96	3.56
14. The principal at this school is approachable and reachable.	4.33	4.24	4.38	4.46	3.68
15. The principal at this school is an effective leader.	4.37	4.24	4.39	4.55	3.76
16. The Superintendent of the Escambia School District is an effective leader.	4.07	4.06	4.21	4.21	3.74
17. The Superintendent of the Escambia School District makes decisions that are in the best interest of children and parents of the district.	4.07	4.06	4.14	4.20	3.74

Woodham Middle School

	Mean 2011	Mean 2012	Mean 2013	Mean 2014	Mean 2015
Overall Mean	4.21	3.92	4.11	3.73	n = 2
1. My child's learning is a high priority at this school.	4.33	4.11	4.09	3.89	
2. School rules/discipline plans are enforced consistently at this school.	4.17	4.09	4.15	3.89	
3. I regularly receive feedback from school staff on how well my child is learning.	4.33	3.66	3.95	3.33	
4. My family is treated with respect at this school.	4.42	4.20	4.40	4.44	
5. My child has every opportunity to be successful at this school.	4.50	4.06	4.12	3.67	
6. My child has the necessary classroom supplies and equipment for effective learning.	4.17	4.11	4.35	4.22	
7. I would recommend this school to other parents.	4.17	3.77	3.98	3.00	
8. This school provides a safe environment for my child to learn.	3.92	4.00	4.05	3.67	
9. My child is recognized for good work and behavior at this school.	4.58	4.00	4.19	4.00	
10. The school is clean and well maintained.	3.75	3.91	4.28	3.89	
11. The teachers, staff, and administration at this school demonstrate a genuine concern for my child.	4.18	4.09	4.19	3.89	
12. I am proud to say I have a child at this school.	4.17	3.83	4.05	3.56	
13. I receive positive phone calls or notes about my child from the school.	4.25	3.57	3.81	3.11	
14. The principal at this school is approachable and reachable.	4.42	3.76	4.10	4.00	
15. The principal at this school is an effective leader.	4.00	3.85	4.17	3.78	
16. The Superintendent of the Escambia School District is an effective leader.	4.08	3.82	4.07	3.67	
17. The Superintendent of the Escambia School District makes decisions that are in the best interest of children and parents of the district.	4.17	3.85	4.02	3.44	

Workman Middle School

	Mean 2011	Mean 2012	Mean 2013	Mean 2014	Mean 2015
Overall Mean	3.63	3.25	3.26	3.23	3.51
1. My child's learning is a high priority at this school.	3.93	3.63	3.76	3.57	3.88
2. School rules/discipline plans are enforced consistently at this school.	3.53	3.03	2.98	3.11	3.45
3. I regularly receive feedback from school staff on how well my child is learning.	3.10	2.97	2.59	2.46	3.09
4. My family is treated with respect at this school.	3.97	3.52	3.61	3.61	3.61
5. My child has every opportunity to be successful at this school.	3.83	3.58	3.52	3.36	3.58
6. My child has the necessary classroom supplies and equipment for effective learning.	4.03	3.42	3.66	3.43	3.76
7. I would recommend this school to other parents.	3.80	3.16	3.09	3.05	3.30
8. This school provides a safe environment for my child to learn.	3.61	3.32	3.30	3.08	3.45
9. My child is recognized for good work and behavior at this school.	3.63	3.55	3.20	3.37	3.70
10. The school is clean and well maintained.	3.70	3.43	3.43	3.10	3.82
11. The teachers, staff, and administration at this school demonstrate a genuine concern for my child.	3.72	3.45	3.14	3.44	3.45
12. I am proud to say I have a child at this school.	3.63	3.39	3.05	2.98	3.45
13. I receive positive phone calls or notes about my child from the school.	3.07	2.80	2.55	2.53	2.94
14. The principal at this school is approachable and reachable.	3.62	2.70	2.89	3.56	3.63
15. The principal at this school is an effective leader.	3.34	2.57	2.82	3.39	3.53
16. The Superintendent of the Escambia School District is an effective leader.	3.62	3.40	3.55	3.45	3.64
17. The Superintendent of the Escambia School District makes decisions that are in the best interest of children and parents of the district.	3.52	3.30	3.57	3.43	3.52

Booker T. Washington High School

	Mean 2011	Mean 2012	Mean 2013	Mean 2014	Mean 2015
Overall Mean	3.93	3.68	3.69	3.38	3.18
1. My child's learning is a high priority at this school.	4.32	3.88	4.06	3.52	3.40
2. School rules/discipline plans are enforced consistently at this school.	4.06	4.00	3.84	3.41	3.27
3. I regularly receive feedback from school staff on how well my child is learning.	3.29	3.00	3.05	2.41	1.93
4. My family is treated with respect at this school.	4.18	4.00	3.79	3.79	3.53
5. My child has every opportunity to be successful at this school.	4.26	3.43	3.99	3.59	3.27
6. My child has the necessary classroom supplies and equipment for effective learning.	4.08	4.29	3.92	3.52	3.80
7. I would recommend this school to other parents.	4.14	3.71	3.78	3.48	3.27
8. This school provides a safe environment for my child to learn.	4.09	4.29	3.71	3.72	3.60
9. My child is recognized for good work and behavior at this school.	3.87	4.00	3.51	3.10	3.14
10. The school is clean and well maintained.	4.01	3.86	3.16	3.59	3.60
11. The teachers, staff, and administration at this school demonstrate a genuine concern for my child.	4.01	3.14	3.60	3.43	3.07
12. I am proud to say I have a child at this school.	4.20	3.71	3.82	3.57	3.20
13. I receive positive phone calls or notes about my child from the school.	3.06	2.86	3.12	2.50	1.67
14. The principal at this school is approachable and reachable.	3.82	3.43	4.01	3.29	2.93
15. The principal at this school is an effective leader.	3.99	3.29	4.11	3.32	3.20
16. The Superintendent of the Escambia School District is an effective leader.	3.72	4.00	3.73	3.43	3.60
17. The Superintendent of the Escambia School District makes decisions that are in the best interest of children and parents of the district.	3.67	3.71	3.58	3.46	3.67

Escambia High School

	Mean 2011	Mean 2012	Mean 2013	Mean 2014	Mean 2015
Overall Mean	3.67	3.35	3.57	3.10	3.03
1. My child's learning is a high priority at this school.	3.62	3.75	3.67	3.41	3.24
2. School rules/discipline plans are enforced consistently at this school.	3.92	3.67	3.72	3.44	3.12
3. I regularly receive feedback from school staff on how well my child is learning.	3.00	2.50	2.78	2.33	2.18
4. My family is treated with respect at this school.	4.08	3.83	3.83	3.22	3.29
5. My child has every opportunity to be successful at this school.	3.92	3.58	3.89	3.16	3.29
6. My child has the necessary classroom supplies and equipment for effective learning.	3.92	3.50	3.56	3.41	3.94
7. I would recommend this school to other parents.	3.67	3.50	3.56	3.04	3.24
8. This school provides a safe environment for my child to learn.	3.67	3.25	3.61	3.67	3.41
9. My child is recognized for good work and behavior at this school.	3.67	3.42	3.44	3.19	3.47
10. The school is clean and well maintained.	3.50	3.25	3.39	3.08	3.12
11. The teachers, staff, and administration at this school demonstrate a genuine concern for my child.	3.75	3.17	3.33	3.04	3.24
12. I am proud to say I have a child at this school.	3.67	3.50	3.50	3.04	3.41
13. I receive positive phone calls or notes about my child from the school.	2.67	2.33	2.56	2.07	1.82
14. The principal at this school is approachable and reachable.	3.92	3.17	3.61	2.93	2.35
15. The principal at this school is an effective leader.	4.00	3.33	3.83	3.15	2.41
16. The Superintendent of the Escambia School District is an effective leader.	3.75	3.58	3.61	3.23	3.06
17. The Superintendent of the Escambia School District makes decisions that are in the best interest of children and parents of the district.	3.75	3.58	3.56	3.33	2.94

J.M. Tate High School

	Mean 2011	Mean 2012	Mean 2013	Mean 2014	Mean 2015
Overall Mean	3.84	3.52	4.09	3.80	3.60
1. My child's learning is a high priority at this school.	4.12	3.71	4.29	4.22	3.83
2. School rules/discipline plans are enforced consistently at this school.	4.00	3.52	4.15	3.84	3.75
3. I regularly receive feedback from school staff on how well my child is learning.	3.34	2.81	3.44	2.94	2.25
4. My family is treated with respect at this school.	4.02	4.00	4.29	4.04	4.08
5. My child has every opportunity to be successful at this school.	4.03	3.76	4.31	4.08	3.64
6. My child has the necessary classroom supplies and equipment for effective learning.	4.02	3.81	4.21	4.07	4.17
7. I would recommend this school to other parents.	4.03	3.71	4.27	3.98	3.75
8. This school provides a safe environment for my child to learn.	4.10	4.00	4.31	4.10	4.08
9. My child is recognized for good work and behavior at this school.	3.76	3.00	4.00	3.69	3.25
10. The school is clean and well maintained.	3.93	3.67	4.07	3.79	3.75
11. The teachers, staff, and administration at this school demonstrate a genuine concern for my child.	3.93	3.48	4.10	3.89	3.58
12. I am proud to say I have a child at this school.	3.98	3.71	4.26	3.93	3.83
13. I receive positive phone calls or notes about my child from the school.	2.90	2.52	3.37	2.72	2.25
14. The principal at this school is approachable and reachable.	3.88	3.52	4.22	3.82	3.42
15. The principal at this school is an effective leader.	4.00	3.62	4.15	3.63	3.83
16. The Superintendent of the Escambia School District is an effective leader.	3.71	3.57	4.17	4.00	3.83
17. The Superintendent of the Escambia School District makes decisions that are in the best interest of children and parents of the district.	3.61	3.48	4.07	3.92	3.92

Northview High School

	Mean 2011	Mean 2012	Mean 2013	Mean 2014	Mean 2015
Overall Mean	Missing	n = 7	4.06	3.78	3.67
1. My child's learning is a high priority at this school.			4.29	3.88	3.61
2. School rules/discipline plans are enforced consistently at this school.			4.24	3.82	3.94
3. I regularly receive feedback from school staff on how well my child is learning.			3.53	3.10	2.72
4. My family is treated with respect at this school.			4.04	3.83	3.83
5. My child has every opportunity to be successful at this school.			4.16	3.80	3.78
6. My child has the necessary classroom supplies and equipment for effective learning.			4.29	3.83	3.72
7. I would recommend this school to other parents.			4.13	3.87	3.89
8. This school provides a safe environment for my child to learn.			4.35	4.10	4.33
9. My child is recognized for good work and behavior at this school.			3.91	3.82	3.67
10. The school is clean and well maintained.			4.41	4.28	4.61
11. The teachers, staff, and administration at this school demonstrate a genuine concern for my child.			4.08	3.71	3.39
12. I am proud to say I have a child at this school.			4.18	3.88	3.72
13. I receive positive phone calls or notes about my child from the school.			3.45	3.07	2.56
14. The principal at this school is approachable and reachable.			4.00	3.72	3.83
15. The principal at this school is an effective leader.			4.03	3.87	3.83
16. The Superintendent of the Escambia School District is an effective leader.			4.04	3.90	3.50
17. The Superintendent of the Escambia School District makes decisions that are in the best interest of children and parents of the district.			3.91	3.85	3.44

Pensacola High School

	Mean 2011	Mean 2012	Mean 2013	Mean 2014	Mean 2015
Overall Mean	3.67	3.12	3.62	3.05	3.24
1. My child's learning is a high priority at this school.	4.20	4.10	4.13	3.51	3.73
2. School rules/discipline plans are enforced consistently at this school.	3.66	3.10	3.56	3.11	2.82
3. I regularly receive feedback from school staff on how well my child is learning.	3.08	2.60	3.16	2.31	2.73
4. My family is treated with respect at this school.	3.94	3.00	3.88	3.37	3.55
5. My child has every opportunity to be successful at this school.	4.01	3.30	4.13	3.40	3.64
6. My child has the necessary classroom supplies and equipment for effective learning.	3.61	2.60	3.92	3.20	3.27
7. I would recommend this school to other parents.	3.98	3.40	3.65	3.15	3.45
8. This school provides a safe environment for my child to learn.	3.73	2.50	3.41	3.06	3.27
9. My child is recognized for good work and behavior at this school.	3.85	3.80	3.70	3.03	3.18
10. The school is clean and well maintained.	3.05	2.90	2.86	2.38	3.00
11. The teachers, staff, and administration at this school demonstrate a genuine concern for my child.	3.88	3.30	3.61	3.15	3.73
12. I am proud to say I have a child at this school.	4.06	3.70	3.83	3.38	3.55
13. I receive positive phone calls or notes about my child from the school.	2.73	2.70	3.10	2.24	2.55
14. The principal at this school is approachable and reachable.	3.68	3.30	3.53	3.03	3.18
15. The principal at this school is an effective leader.	3.79	3.11	3.72	3.03	3.00
16. The Superintendent of the Escambia School District is an effective leader.	3.58	3.00	3.54	3.03	3.18
17. The Superintendent of the Escambia School District makes decisions that are in the best interest of children and parents of the district.	3.59	2.70	3.51	3.18	3.18

Pine Forest High School

	Mean 2011	Mean 2012	Mean 2013	Mean 2014	Mean 2015
Overall Mean	3.42	2.79	4.39	4.54	3.78
1. My child's learning is a high priority at this school.	3.81	3.00	4.57	4.53	3.82
2. School rules/discipline plans are enforced consistently at this school.	3.62	2.63	4.42	4.41	3.82
3. I regularly receive feedback from school staff on how well my child is learning.	2.96	2.13	4.07	4.56	3.27
4. My family is treated with respect at this school.	3.45	2.75	4.43	4.50	3.73
5. My child has every opportunity to be successful at this school.	3.66	3.00	4.52	4.52	4.00
6. My child has the necessary classroom supplies and equipment for effective learning.	3.73	3.38	4.51	4.69	4.18
7. I would recommend this school to other parents.	3.40	2.63	4.42	4.43	3.82
8. This school provides a safe environment for my child to learn.	3.62	3.00	4.46	4.48	4.09
9. My child is recognized for good work and behavior at this school.	3.32	2.75	4.38	4.51	3.82
10. The school is clean and well maintained.	3.53	2.50	4.44	4.68	4.09
11. The teachers, staff, and administration at this school demonstrate a genuine concern for my child.	3.28	2.63	4.34	4.52	3.73
12. I am proud to say I have a child at this school.	3.51	2.63	4.46	4.45	3.64
13. I receive positive phone calls or notes about my child from the school.	2.89	2.00	4.02	4.58	3.00
14. The principal at this school is approachable and reachable.	3.12	2.63	4.43	4.45	3.64
15. The principal at this school is an effective leader.	3.31	3.00	4.44	4.44	3.64
16. The Superintendent of the Escambia School District is an effective leader.	3.57	3.50	4.40	4.76	4.09
17. The Superintendent of the Escambia School District makes decisions that are in the best interest of children and parents of the district.	3.44	3.38	4.38	4.77	3.91

West Florida Tech High School

	Mean 2011	Mean 2012	Mean 2013	Mean 2014	Mean 2015
Overall Mean	4.03	4.34	4.05	3.93	3.88
1. My child's learning is a high priority at this school.	4.39	4.64	4.40	4.30	4.19
2. School rules/discipline plans are enforced consistently at this school.	4.26	4.68	4.17	4.17	4.22
3. I regularly receive feedback from school staff on how well my child is learning.	3.50	3.64	3.31	3.17	2.92
4. My family is treated with respect at this school.	4.15	4.64	4.22	4.08	4.19
5. My child has every opportunity to be successful at this school.	4.36	4.64	4.27	4.13	3.95
6. My child has the necessary classroom supplies and equipment for effective learning.	4.21	4.44	4.36	4.22	4.35
7. I would recommend this school to other parents.	4.41	4.76	4.45	4.27	4.22
8. This school provides a safe environment for my child to learn.	4.29	4.60	4.40	4.27	4.46
9. My child is recognized for good work and behavior at this school.	3.96	4.38	4.18	3.77	3.44
10. The school is clean and well maintained.	4.11	4.32	4.26	4.08	4.14
11. The teachers, staff, and administration at this school demonstrate a genuine concern for my child.	4.05	4.48	4.07	3.93	3.73
12. I am proud to say I have a child at this school.	4.42	4.76	4.43	4.28	4.27
13. I receive positive phone calls or notes about my child from the school.	3.11	3.56	3.27	3.03	2.56
14. The principal at this school is approachable and reachable.	3.79	4.16	3.69	3.79	3.54
15. The principal at this school is an effective leader.	3.96	4.16	3.75	3.81	3.76
16. The Superintendent of the Escambia School District is an effective leader.	3.78	4.08	3.79	3.89	4.08
17. The Superintendent of the Escambia School District makes decisions that are in the best interest of children and parents of the district.	3.72	3.88	3.85	3.88	4.00

Escambia Westgate

	Mean 2011	Mean 2012	Mean 2013	Mean 2014	Mean 2015
Overall Mean	Missing	n = 3	n = 0	4.61	4.55
1. My child's learning is a high priority at this school.				4.63	4.61
2. School rules/discipline plans are enforced consistently at this school.				4.51	4.41
3. I regularly receive feedback from school staff on how well my child is learning.				4.66	4.64
4. My family is treated with respect at this school.				4.69	4.64
5. My child has every opportunity to be successful at this school.				4.62	4.63
6. My child has the necessary classroom supplies and equipment for effective learning.				4.64	4.52
7. I would recommend this school to other parents.				4.69	4.68
8. This school provides a safe environment for my child to learn.				4.66	4.63
9. My child is recognized for good work and behavior at this school.				4.71	4.59
10. The school is clean and well maintained.				4.77	4.64
11. The teachers, staff, and administration at this school demonstrate a genuine concern for my child.				4.74	4.63
12. I am proud to say I have a child at this school.				4.71	4.71
13. I receive positive phone calls or notes about my child from the school.				4.68	4.63
14. The principal at this school is approachable and reachable.				4.42	4.53
15. The principal at this school is an effective leader.				4.49	4.50
16. The Superintendent of the Escambia School District is an effective leader.				4.34	4.22
17. The Superintendent of the Escambia School District makes decisions that are in the best interest of children and parents of the district.				4.38	4.16

	Mean 2011	Mean 2012	Mean 2013	Mean 2014	Mean 2015
Overall Mean	Missing	n = 2	4.64	4.74	4.78
1. My child's learning is a high priority at this school.			4.79	4.75	4.83
2. School rules/discipline plans are enforced consistently at this school.			4.62	4.68	4.81
3. I regularly receive feedback from school staff on how well my child is learning.			4.55	4.73	4.74
4. My family is treated with respect at this school.			4.74	4.83	4.88
5. My child has every opportunity to be successful at this school.			4.73	4.78	4.88
6. My child has the necessary classroom supplies and equipment for effective learning.			4.66	4.76	4.84
7. I would recommend this school to other parents.			4.83	4.85	4.86
8. This school provides a safe environment for my child to learn.			4.66	4.85	4.84
9. My child is recognized for good work and behavior at this school.			4.60	4.76	4.84
10. The school is clean and well maintained.			4.62	4.69	4.79
11. The teachers, staff, and administration at this school demonstrate a genuine concern for my child.			4.60	4.74	4.81
12. I am proud to say I have a child at this school.			4.71	4.85	4.86
13. I receive positive phone calls or notes about my child from the school.			4.63	4.75	4.69
14. The principal at this school is approachable and reachable.			4.74	4.78	4.81
15. The principal at this school is an effective leader.			4.66	4.80	4.81
16. The Superintendent of the Escambia School District is an effective leader.			4.46	4.47	4.48
17. The Superintendent of the Escambia School District makes decisions that are in the best interest of children and parents of the district.			4.40	4.49	4.49

	Mean 2011	Mean 2012	Mean 2013	Mean 2014	Mean 2015
Overall Mean	n = 3	n= 3	4.59	4.56	n= 0
1. My child's learning is a high priority at this school.			4.93	4.78	
2. School rules/discipline plans are enforced consistently at this school.			4.53	4.44	
3. I regularly receive feedback from school staff on how well my child is learning.			4.20	4.11	
4. My family is treated with respect at this school.			4.79	4.76	
5. My child has every opportunity to be successful at this school.			4.87	4.83	
6. My child has the necessary classroom supplies and equipment for effective learning.			4.60	4.72	
7. I would recommend this school to other parents.			4.87	4.78	
8. This school provides a safe environment for my child to learn.			4.73	4.67	
9. My child is recognized for good work and behavior at this school.			4.80	4.50	
10. The school is clean and well maintained.			4.07	4.39	
11. The teachers, staff, and administration at this school demonstrate a genuine concern for my child.			4.80	4.83	
12. I am proud to say I have a child at this school.			4.87	4.94	
13. I receive positive phone calls or notes about my child from the school.			4.33	4.22	
14. The principal at this school is approachable and reachable.			4.62	4.39	
15. The principal at this school is an effective leader.			4.54	4.56	
16. The Superintendent of the Escambia School District is an effective leader.			4.33	4.28	
17. The Superintendent of the Escambia School District makes decisions that are in the best interest of children and parents of the district.			4.23	4.28	