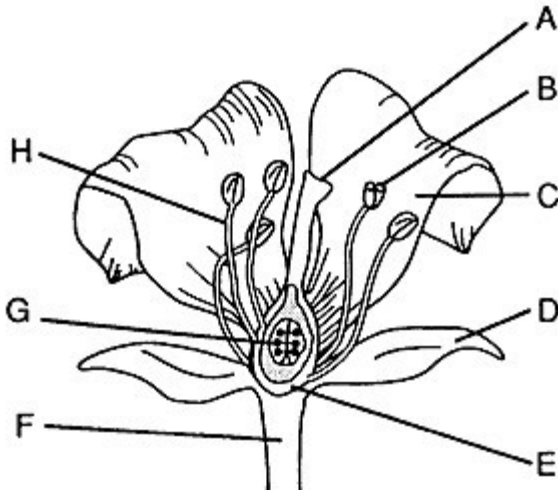


SC.912.L.14.7 – Plant Structure – Example 11 Answer

The diagram below represents a flower, the reproductive structure of some plants. Most flowers have both male and female structures for fertilization and reproduction.



Which structure is represented by the letter A in the diagram above?

- A. the stamen, a male structure which produces pollen**
- B. the pistil, a female structure which collects pollen and passes it to the ovary**
- C. the sepal, a modified leaf used for protection of the flower**
- D. the petals, decorative structures which attract pollinators**

Answer

B. the pistil, a female structure which collects pollen and passes it to the ovary

The pistil is made of several carpals fused together. The tip of the pistil is usually sticky and holds pollen grains when they land there. The style is a tube that leads from the stigma to the ovary, where fertilization occurs to form the zygote.