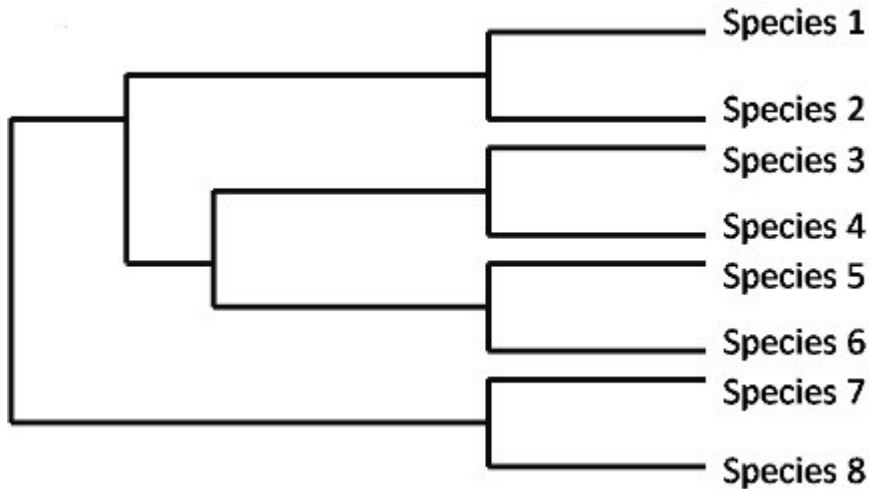


SC.912.L.15.1 – Evolution – Example 5 Answer

Scientists are studying the evolutionary history of a group of plants in the United States, and they developed an evolutionary tree, as shown below.



Which statement can be inferred from the evolutionary tree?

- A. Species 1 is most closely related to Species 8.**
- B. Species 2 is most closely related to Species 3.**
- C. Species 3 is most closely related to Species 7.**
- D. Species 5 is most closely related to Species 6.**

Answer

D. Species 5 is most closely related to Species 6.

Both species 5 and 6 evolved from the same common ancestor.